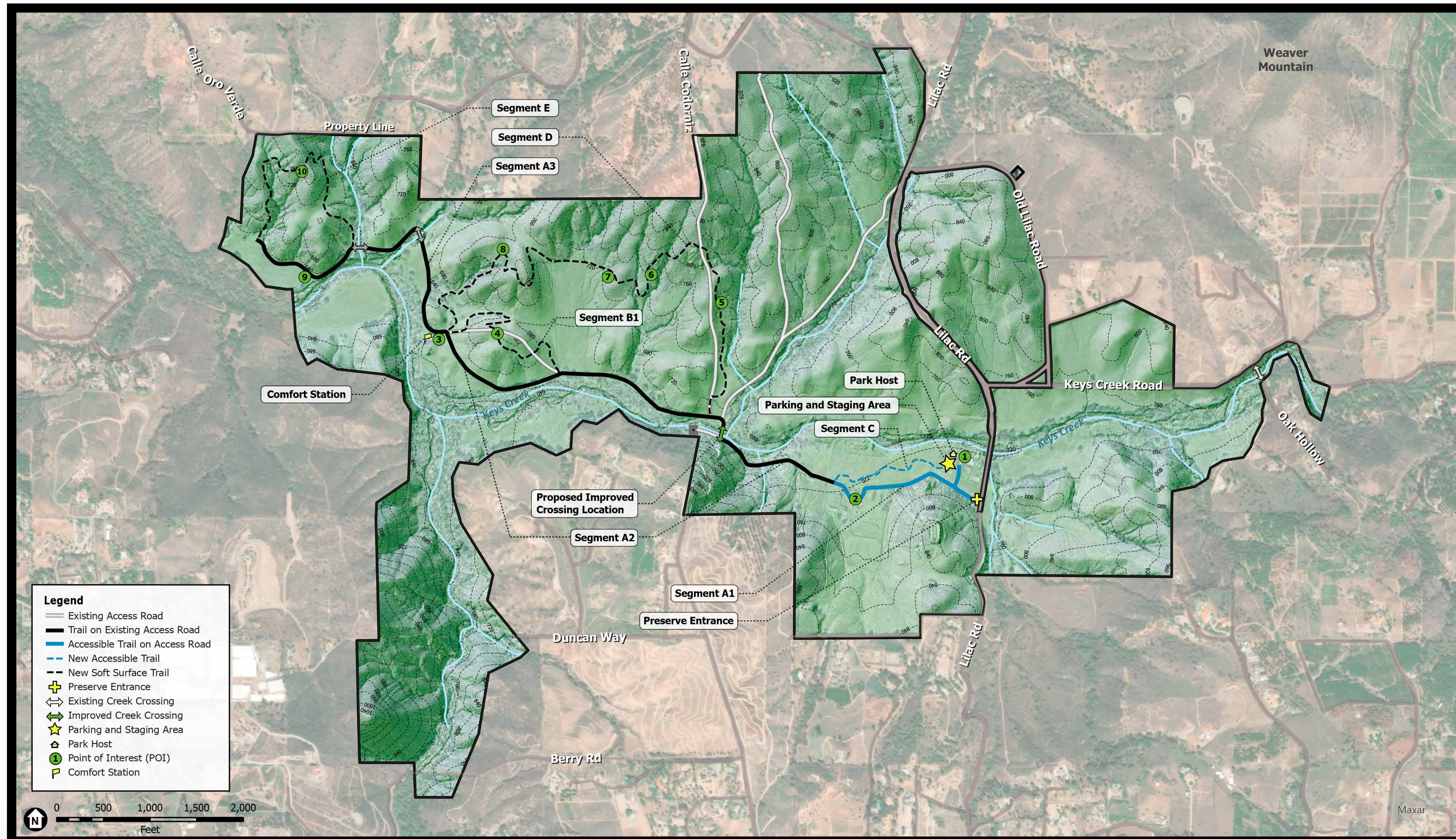


# RANCHO LILAC PRESERVE

## Public Access



### Trail Segments (4.65 mi)

**Segment A1 (0.34 mi)**  
Trail follows the existing access road from the parking and staging area through the historic ranch structures complex. The trail does not exceed 5% slope and must be maintained for utility access.

**Segment A2 (1 mi)**  
Trail follows the existing access road from the historic ranch structures to the proposed comfort station. The trail winds through shady canopy cover, crosses Keys Creek and then follows along the northern edge of the riparian zone before crossing an open meadow and reaching the proposed comfort station.

**Segment A3 (0.65 mi)**  
Trail accesses the western extent of the Preserve following the existing access road from the proposed comfort station across two existing creek crossings and along the northern edge of the western meadow.

**Segment B1 (0.4 mi)**  
Trail provides access to panoramic views from atop a small hill, avoiding the existing fall line roads in favor of a more scenic, gradual, and sustainable trail route.

**Segment C (0.3 mi)**  
Accessible trail winds through open grassland adjacent to the ranch structures creating an accessible loop with Segment A1. Trail shall be separated from buildings with appropriate fence and shall not exceed 5% slope.

**Segment D (1.36 mi)**  
Soft-surface trail with numerous viewpoints looking south across the valley with occasional sightlines back toward the historic ranch. The trail gently undulates in elevation traversing diverse terrain while directing users away from the steep grade of Calle Codorniz (SDCWA Route).

**Segment E (0.6 mi)**  
Soft-surface trail creates a moderately strenuous loop in the western portion of the site. Trail connects on either end to Segment A3 and rises from the valley floor to the ridges above, offering sweeping views of the Rancho Lilac Preserve.

### Points of Interest

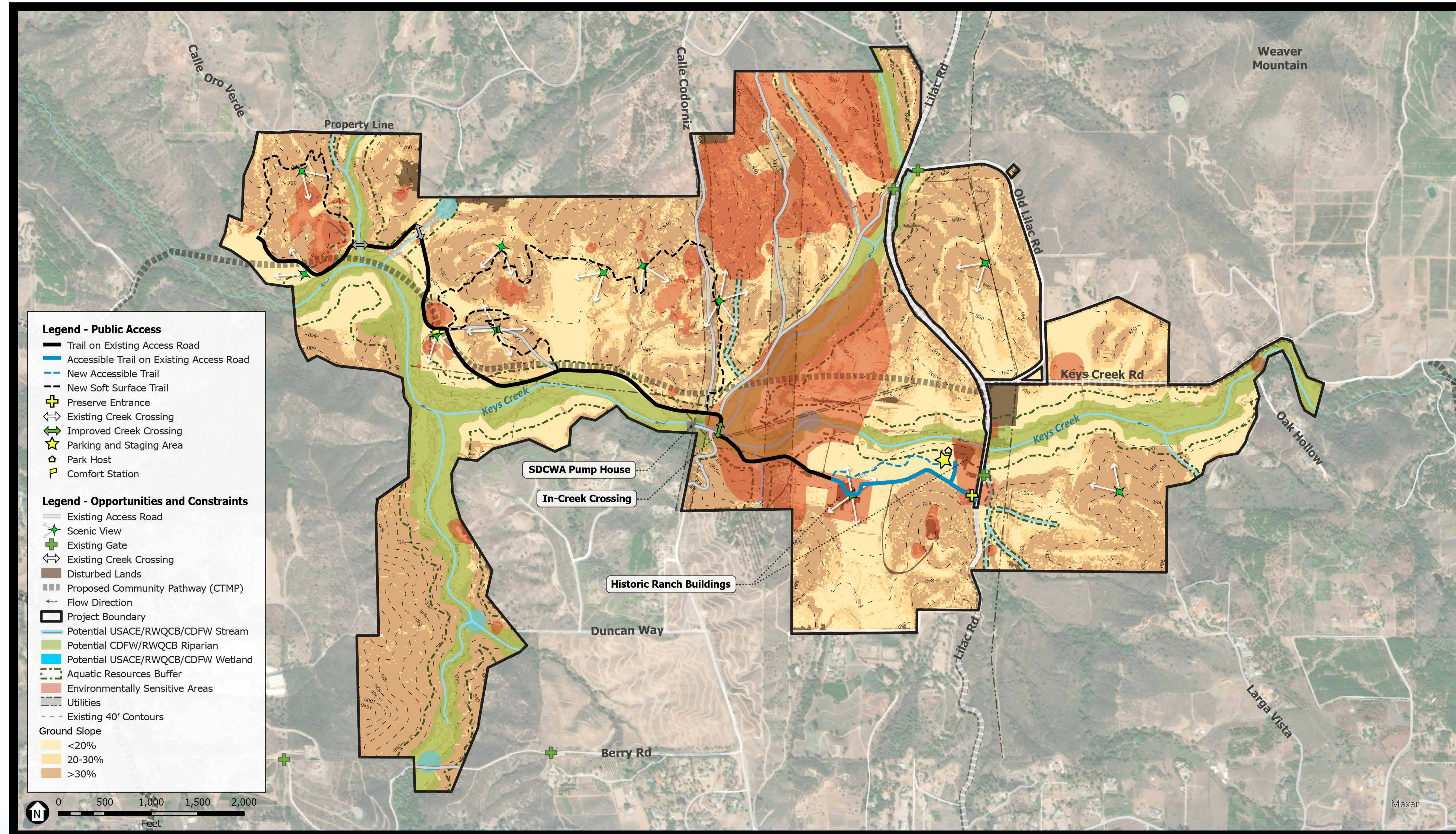
- 1 Historic ranch buildings with interpretive signage
- 2 Historic ranch buildings with interpretive signage
- 3 Shady oak grove
- 4 Viewpoint with 360 degree panoramic views
- 5 Viewpoint with view of rock outcroppings on opposite bank and historic ranch
- 6 Viewpoint and rock outcropping with southerly views across the valley of the preserve
- 7 Viewpoint with westerly views of the preserve
- 8 Viewpoint with panoramic views of the preserve
- 9 Junction of riparian corridor with open meadow
- 10 Viewpoint with southeasterly views of the preserve and of the historic ranch





# RANCHO LILAC PRESERVE

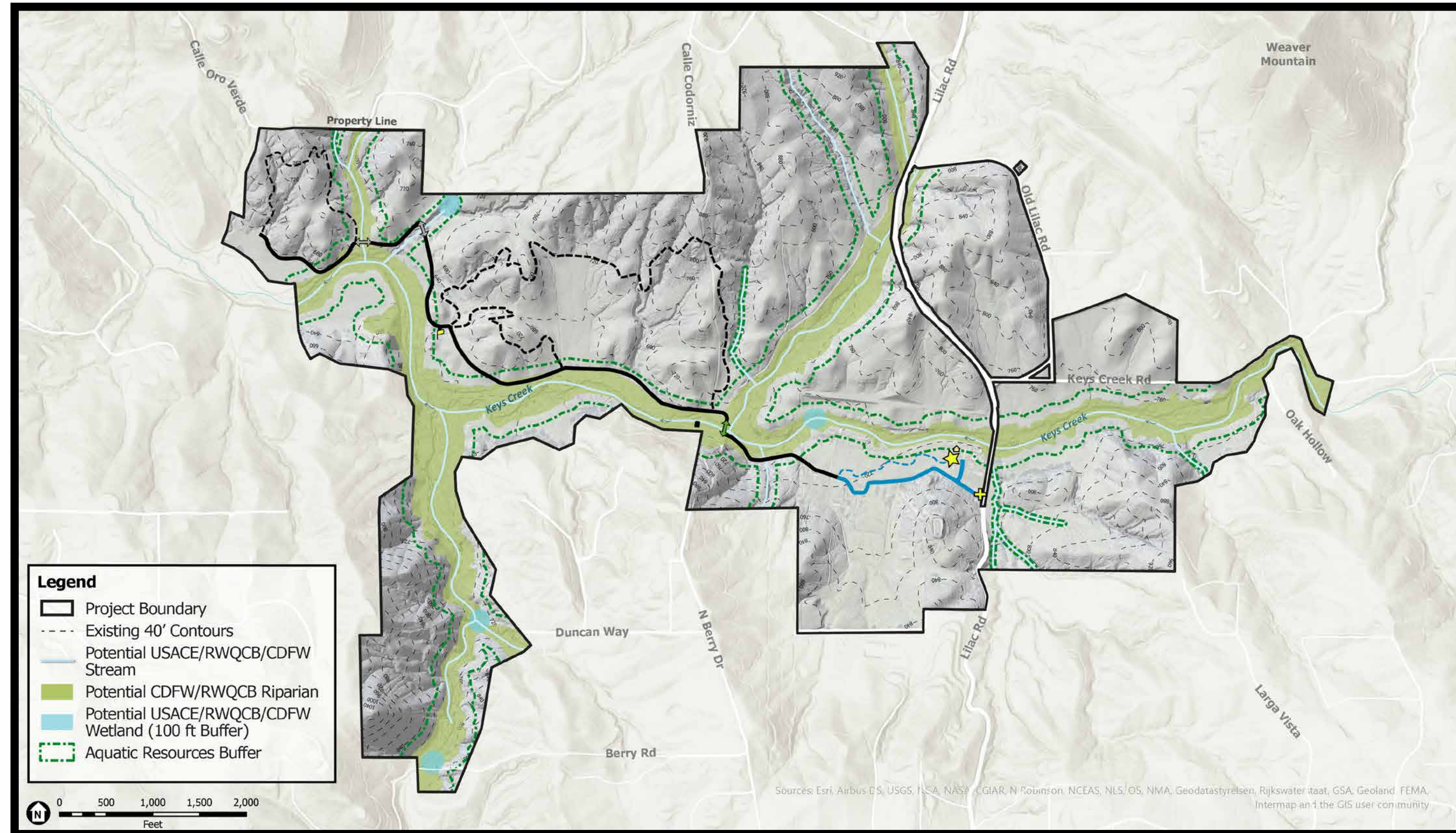
Opportunities and Constraints with Public Access



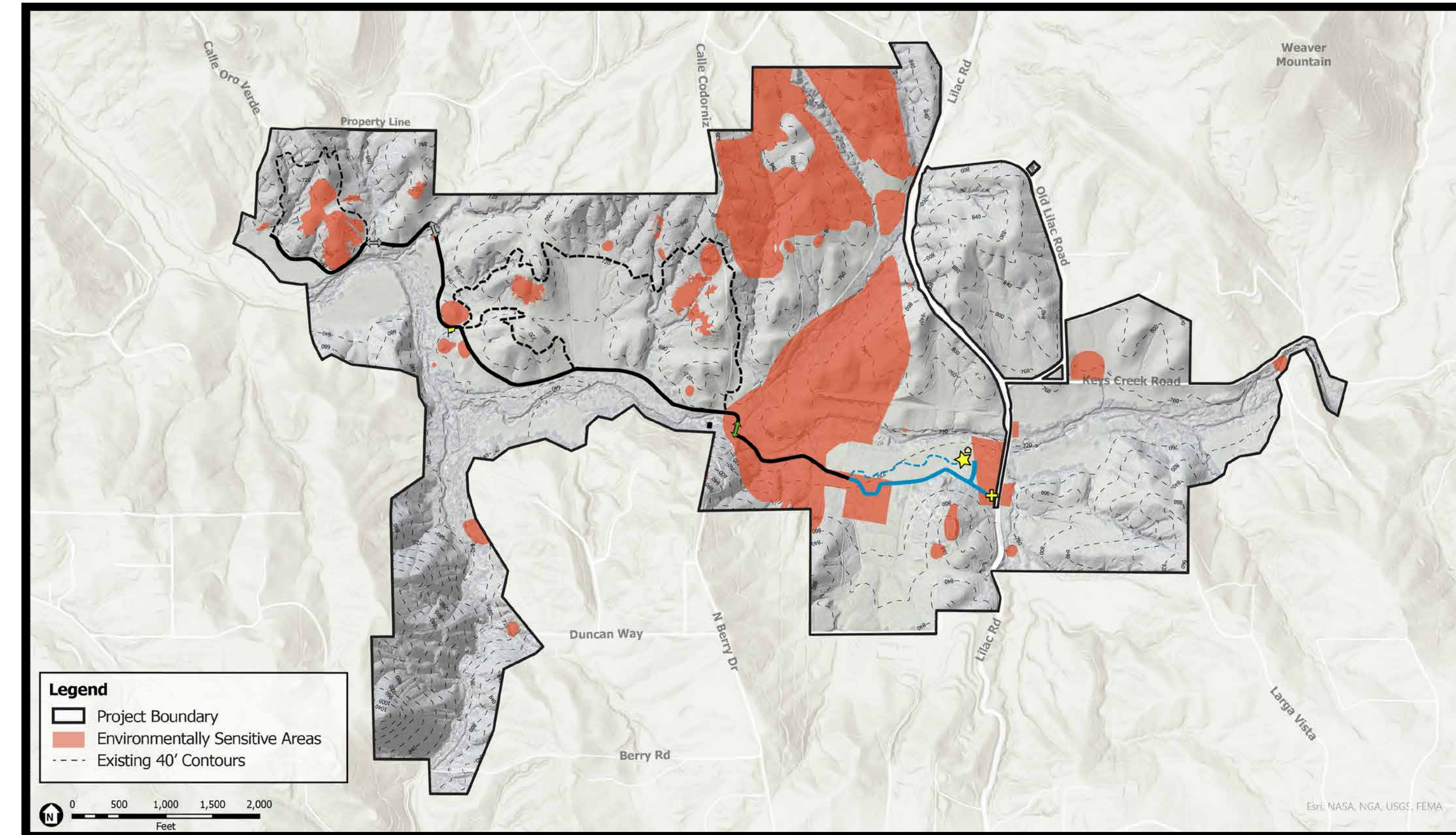


# RANCHO LILAC PRESERVE

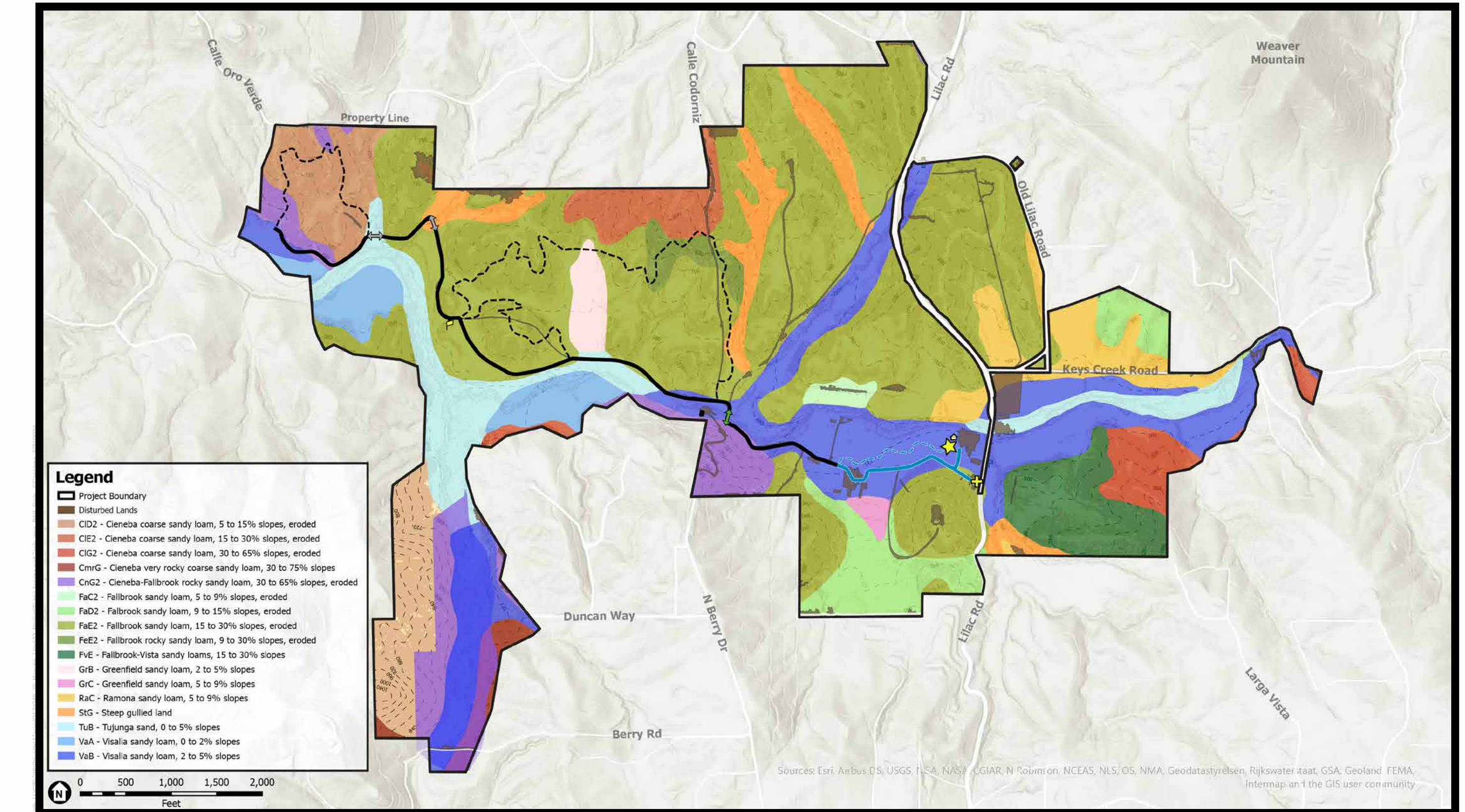
## Opportunities and Constraints with Public Access



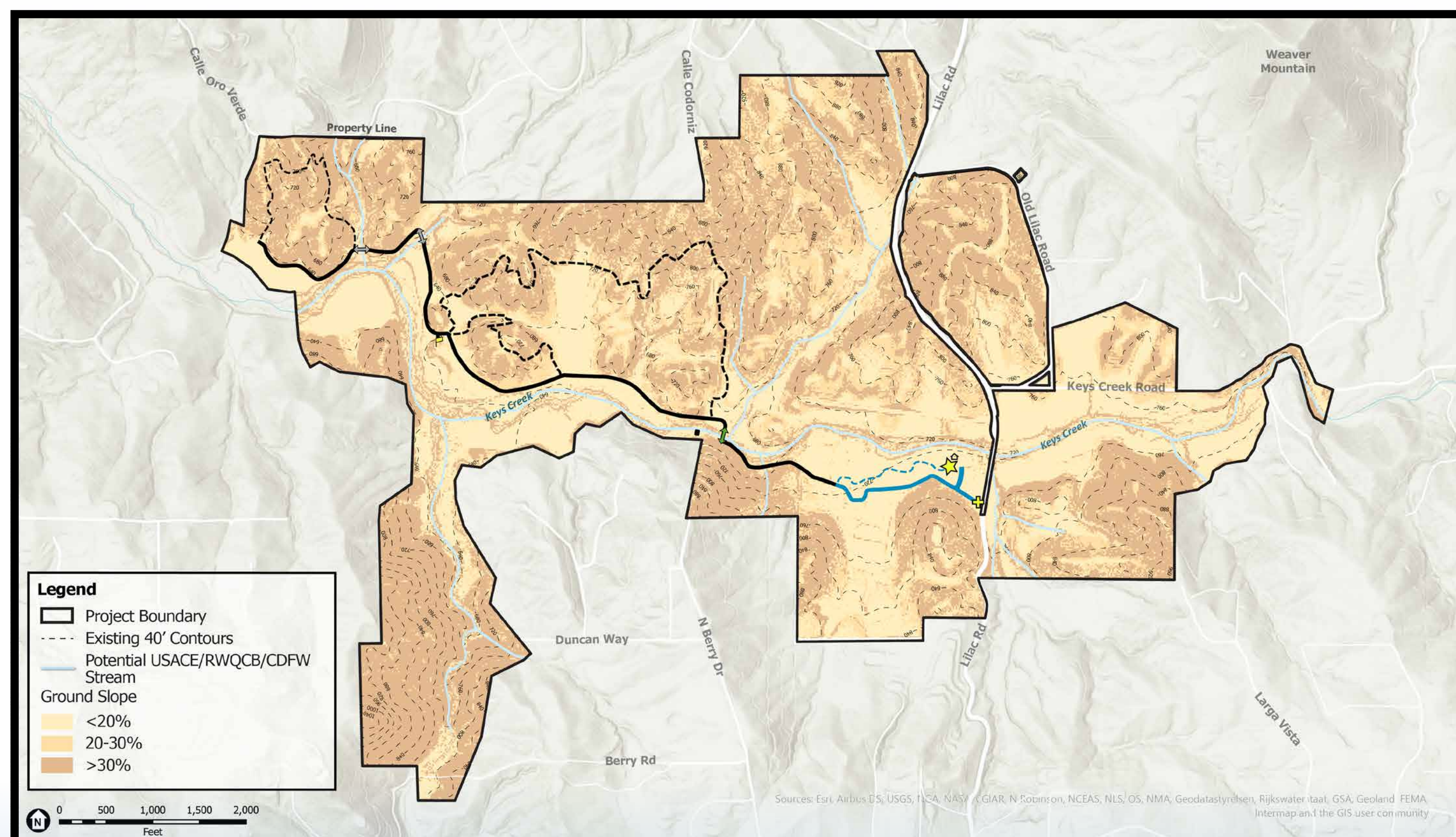
Aquatic Resources



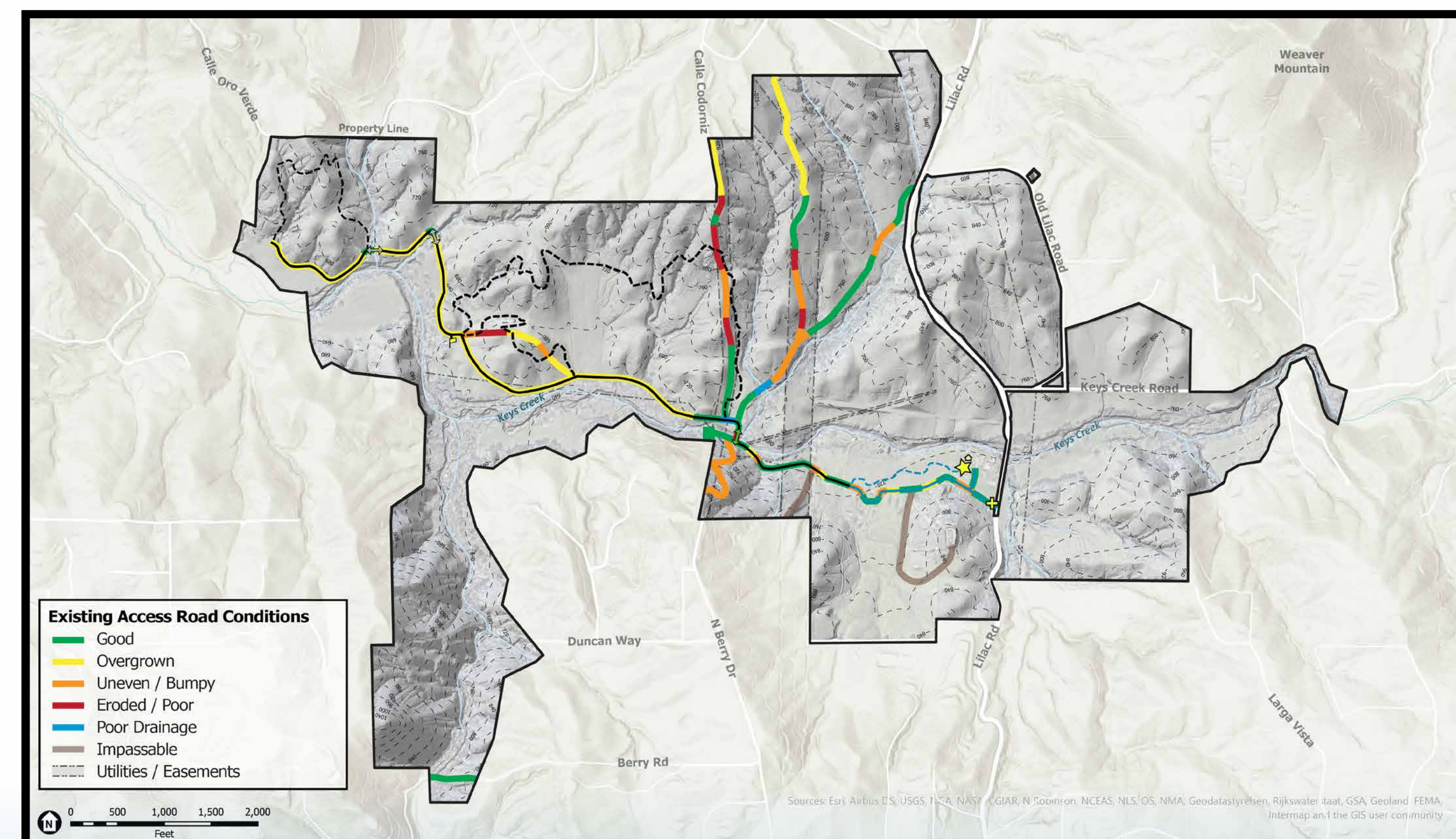
Environmentally Sensitive Areas



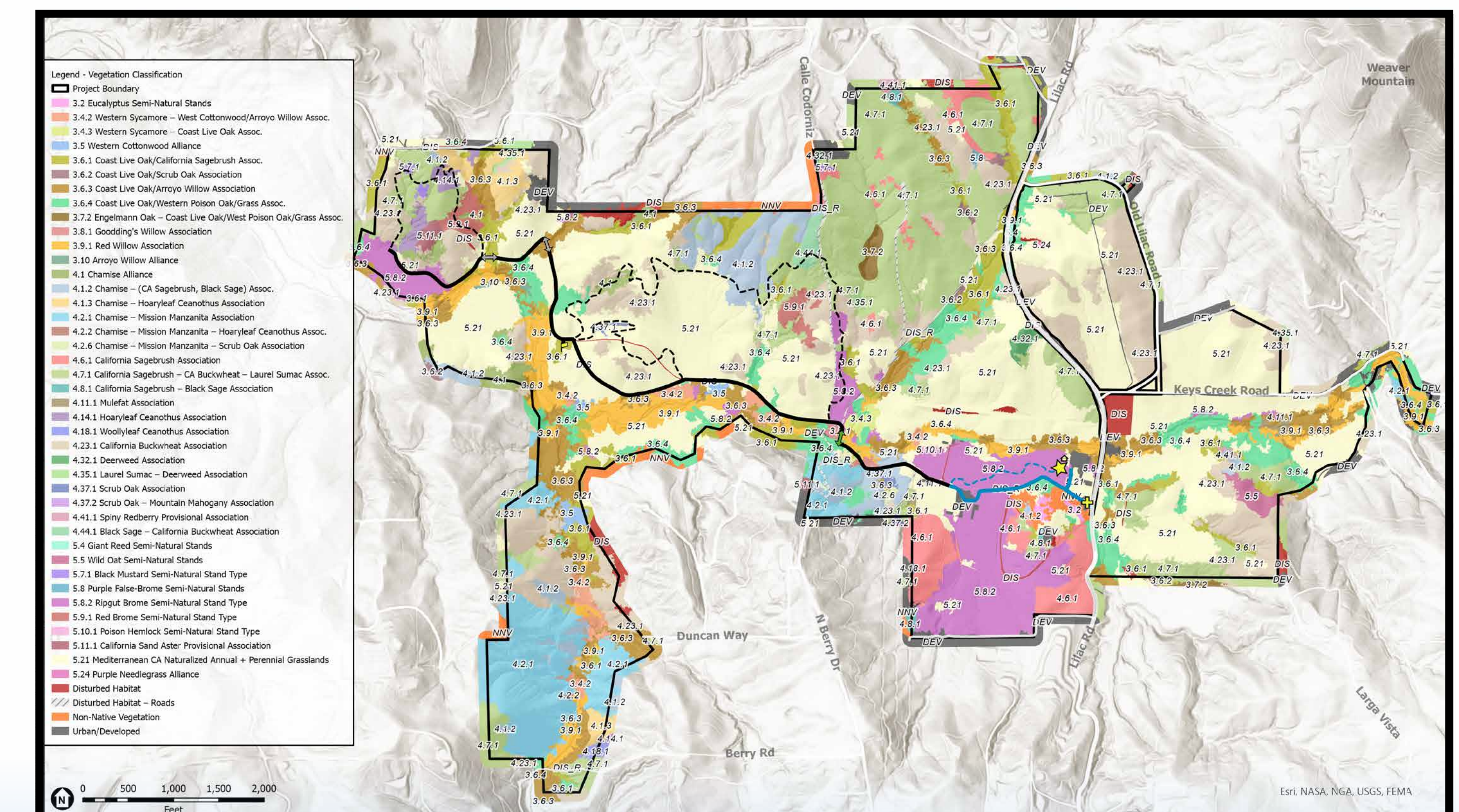
Soil Types



Slopes



Existing Access Conditions



Vegetation Classification

