

COUNTY OF SAN DIEGO

MULTIPLE SPECIES CONSERVATION PROGRAM

SOUTH COUNTY SUBAREA PLAN ANNUAL REPORT (YEAR 19)

Reporting Period: January 1, 2016 – December 31, 2016

April 26, 2017

San Vicente Connection



Flinn Springs



Otay Ranch



Stelzer Park



Lakeside Linkage



**County of San Diego
Multiple Species Conservation Program**

South County Subarea Plan Annual Report (Year 19)

Reporting Period: January 1, 2016 – December 31, 2016

April 26, 2017

County of San Diego Board of Supervisors

Greg Cox, District 1

Dianne Jacob, District 2

Kristin Gaspar, District 3

Ron Roberts, District 4

Bill Horn, District 5

Chief Administrative Officer

Helen N. Robbins-Meyer

Deputy Chief Administrative Officer, Land Use & Environment Group

Sarah Aghassi

Director, Department of Parks and Recreation (DPR)

Brian Albright

DPR Chief, Resource Management

Christine A. Tolchin

DPR Group Program Manager

Deborah Mosley

Director, Department of Planning and Development Services (PDS)

Mark Wardlaw

PDS Chief, Advance Planning

Mary Kopaskie Brown

Table of Contents

1.0	Introduction	5
1.1	MSCP Coordination Efforts.....	5
2.0	Subarea Plan Updates	7
2.1	Quino Checkerspot Butterfly Amendment	7
2.2	MSCP Amendments.....	7
2.3	MSCP Map Update	7
3.0	Habitat Gains and Losses.....	8
3.1	Public Acquisitions Audit - Per Implementing Agreement Section 14.6.....	9
3.2	Acquisitions Overview	11
3.3.	Habitat Gains and Losses within the Pre-Approved Mitigation Area	11
3.4	HabiTrak	14
3.4.1	Rough Step: Preserve & Assembly by Vegetation Type	15
3.5	Mitigation Banks	17
3.6	Mitigation Land Policy	17
3.8	Clearing for Single-Family Residences on Small Parcels	20
3.9	Agricultural Exemption	21
3.10	Building Permit COIs.....	21
4.0	Management and Monitoring	22
4.1	Preserve Management of County Lands.....	25
4.2	Resource Management Plans.....	31
4.3	Management and Monitoring Partners	32
4.4	Grant Funded Management and Monitoring Projects	33
4.5	Research on County Property	36
4.7	Otay Ranch Preserve – County and City of Chula Vista owned land	49
4.8	Preserve Management of Private Mitigation Lands	49
4.8.1.	Non-Compliant Private RMP Reporting.....	50

4.8.2	Delinquent Private Monitoring Reports	50
4.8.3	2016 Annual Report Private RMP Review.....	50
4.8.4	Mitigation Banks	52
5.0	Financial Summary	53
5.1	County Contribution	53
5.2	Otay Ranch Preserve Community Facility District 97-2.....	54
5.3	<i>TransNet</i> Funding	55
6.0	Education and Outreach	56
7.0	Conclusion.....	57

Table of Contents

Figures

Figure 1 Map of County Preserves/Parks within the South County MSCP and Legend.....	24, 25
---	--------

Tables

Table 1 MSCP Baseline Preserve.....	8
Table 2 MSCP Private Mitigation.....	8
Table 3 MSCP Public Acquisitions	9
Table 4 MSCP Preserve Assembly Status.....	15
Table 5 Habitat Gains By Segment	17
Table 6 Habitat Losses By Segment.....	17
Table 7 Mitigation Land Policy Projects.....	20

Appendices

Appendix 1 -Additions to the Preserve.....	58
Appendix 2 - County Tracked Acquisitions Since 1998	60
Appendix 3 A- C - Wildlife Agency Tracked Acquisitions.....	66
Appendix 4 - Summary of MSCP Gains	75
Appendix 5 - County Acquisition: San Vicente Connection (Navarro).....	77
Appendix 6 - Acquisition: The Nature Conservancy (Proctor Valley).....	78
Appendix 7 - Summary of MSCP Losses	79
Appendix 8 - Summary of Habitat Losses and Gains... ..	86
Appendix 9 - Habitat Conservation Accounting Model	87
Appendix 10 - Mitigation Bank Status.....	89
Appendix 11 - COIs Issued for Clearing for Single Family Residences on Small Parcels.....	90
Appendix 12 - COIs Issued for Agricultural Clearing	91
Appendix 13 - 2016 Stewardship & Adaptive Management Activities at County Preserves.....	92
Appendix 14 - Private Mitigation Lands	94

Acronyms

BLM - Bureau of Land Management
BMO - Biological Mitigation Ordinance
BRCA - Biological Resource Core Area
CDFW - California Department of Fish and Wildlife
CEQA - California Environmental Quality Act
CMP - Comprehensive Monitoring Plan
COI - Certificate of Inclusion
DPR – County of San Diego Department of Parks and Recreation
EMP - Environmental Mitigation Program
HabiTrak - Habitat Tracking Reporting
HCA - Habitat Conservation Area
HMA - Habitat Management Area
HOA – Homeowners Association
IA - Implementing Agreement
MHPA – Multiple Habitat Planning Area
MSCP - Multiple Species Conservation Program
OVRP - Otay Valley Regional Park
PAMA - Pre-Approved Mitigation Area
PAR - Property Analysis Record
PDS - County of San Diego Department of Planning & Development Services
POM - Preserve Owner/Manager
PSB - Preserve Steward/Biologist
RMP - Resource Management Plan
SANDAG - San Diego Association of Governments
SDRPF - San Diego River Park Foundation
SDRVC - San Dieguito River Valley Conservancy
USFWS - United States Fish and Wildlife Service
USGS - United States Geological Survey
Wildlife Agencies - used collectively for the USFWS and CDFW

EXECUTIVE SUMMARY

This is the 19th annual report for the County of San Diego Multiple Species Conservation (MSCP) South County Subarea Plan (Subarea Plan) adopted by the County of San Diego Board of Supervisors on October 22, 1997. This report was prepared in conformance with Section 14.2 of the Implementing Agreement (IA) executed between the County of San Diego, California Department of Fish and Wildlife and the United States Fish and Wildlife Service on March 17, 1998. This report accounts for habitat gain and loss associated with acquisitions and development projects from January 1, 2016 through December 31, 2016 within the MSCP Subarea Plan boundary. It also discusses coordination efforts, Subarea Plan updates, land acquisitions, preserve assembly, land management activities, species monitoring programs, education and outreach and funding sources that are used by the County to meet its MSCP obligations.

The MSCP is important for San Diego's quality of life because it conserves San Diego County's unique native habitats and wildlife for future generations to enjoy; protects the diversity of native plants and animals, including threatened and endangered species; works across political boundaries in a regional conservation effort; protects watersheds and water quality; ensures compliance with the federal Endangered Species Act and associated Habitat Conservation Plan permits, state Endangered Species Act, state Natural Community Conservation Planning Act and associated permits/authorizations; and accommodates future growth by streamlining building regulations.

The MSCP Subarea Plan has an overall preservation goal of 98,379 acres. Preservation is targeted within areas identified as having habitat with high biological value. These areas are known as the Pre-approved Mitigation Area (PAMA). Preservation can also occur in Biological Resource Core Areas (BRCA)--lands located outside of the PAMA that contribute to a viable regional ecosystem according to criteria in the Biological Mitigation Ordinance--upon mutual agreement with the Wildlife Agencies. The MSCP Preserve is assembled through a combination

of baseline open space areas that existed in 1997, lands preserved as private mitigation through the development permit process, and public agency and non-profit conservation partner acquisitions from willing sellers.

County acquisition numbers in this report have been adjusted from previous reports as a result of an exchange of information between the County and the signatories of the IA. The County and signatories (public agency partners) reviewed the acquisition of land over the past 19 years and have reached a consensus on consistent methodology of tracking. From the adoption of the Subarea Plan in 1997 through 2016, the County and its MSCP partners have assembled 79 percent of the Preserve. In 19 years of this 50-year program, the County and its public agency and private conservation partners have assembled 77,552 acres of the proposed 98,379-acre MSCP Preserve.

During this reporting period there were 555 acres of habitat gain within the MSCP Preserve. Of this, 33 acres were associated with local acquisitions by the County (23 acres) and non-profit conservation partners (The Nature Conservancy's Proctor Valley 10-acre acquisition). The remaining acreage gains in the preserve were associated with federal and state acquisitions (212 acres) and private land dedication required as a County condition of private development (310 acres). In 2016, 30 acres of habitat were impacted in the Preserve and another 198 acres were impacted outside of the Preserve, but within the South County Subarea boundaries. The numerical gains show a significant investment toward the creation of a functional preserve. Acreage gains continue despite the previously slow pace of land acquired through private mitigation; that acreage is now supplemented by additional acquisitions above the original public agency acquisition goal targeted in 1997.

The County commitment to its parks and open space conservation program is demonstrated by consistent dedication of funding for acquisition, management, and monitoring of these natural areas to preserve their biological value and provide compatible passive recreation opportunities where appropriate. In 2016, the County Board of Supervisors appropriated \$10 million for acquisitions within the adopted South County MSCP Subarea and

planned North and East County Plan areas. In addition, roughly \$5.9 million was spent for management and monitoring of open space lands in the plan areas, including \$2.2 million for South County Subarea lands.

More than 38,000 acres of open space (among the nearly 50,000 acres DPR owns and manages) are actively maintained, managed, and monitored by the County. This is roughly comprised as follows:

- 6,500 acres acquired and managed¹ within the SC MSCP Subarea, Tijuana River Valley, Otay Valley Regional Park since 1998,
- 5,800 acres in future North County Plan Area since 2001 and 55 acres in City of Encinitas HCP,
- 6,700 acres East County Plan Areas since 2001, and
- 19,000 acres of open space owned and managed in all plan or potential plan areas within the County upon Subarea Plan adoption. More than 7,000 of these acres are within the SC Plan Subarea.

The County provides of County-owned/managed preserves that includes environmental education and regular on-going maintenance and monitoring activities such as public access control and enforcement, fencing, gate installation and repair, combustible fuel management, as well as adaptive management activities, such as invasive plant removal. Management and monitoring activities were conducted on County preserves as well as on private mitigation lands in accordance with their respective Resource Management Plans (RMPs) The County continued implementation of the Comprehensive Monitoring Plan (CMP), including performing habitat and resource specific surveys of County Preserves identified in the CMP.

In addition to regular on-going maintenance and monitoring, the County receives grants for stewardship. The San Diego Association of Governments (SANDAG) *TransNet* Environmental Mitigation Program (EMP) grant program is targeted towards MSCP and open space restoration

¹ 556 acres were acquired by County/with County assistance that are not owned by the County. Acreage owned in Otay Ranch Preserve but not managed by County also not included.

projects. One previously awarded EMP grant for the Lakeside Linkage Preserve project reached completion in 2016. Two new EMP grants were awarded to the County in 2015 and were initiated in 2016. One project at the Furby-North Property is for access control and the other project within the Otay River Valley is for Cactus Wren Habitat Restoration.

Three new grants were awarded to the County in 2016. An EMP grant was awarded to supplement the 2015 Otay River Valley Cactus Wren Habitat Restoration project, a 2-year EMP grant was awarded in Otay Valley Regional Park to restore habitat for the Quino checkerspot butterfly, and a California River Parkways Grant Program was awarded to supplement on-going habitat restoration activities in the Tijuana River Valley Regional Park.

The County continues to meet its MSCP obligations by coordinating with our land acquisition partners to acquire, manage, and monitor our Preserve lands while performing outreach and education to the public on the value of these exceptional resources.

1.0 INTRODUCTION

The purpose of this document is to provide an update on the status of the Multiple Species Conservation Program (MSCP) South County Subarea Plan (Subarea Plan) for the current reporting period (January 1, 2016 — December 31, 2016). This reporting period marks the 19th year of implementing the MSCP Subarea Plan. The report includes information regarding habitat gains and losses; permits, amendments and other implementation activities; management and monitoring activities; funding sources; and education and outreach efforts. Annual tracking of Subarea gains, losses, management, and monitoring is required by Section 14.2 of the Implementing Agreement (IA) dated March 17, 1998 and the Habitat Conservation Plan/Natural Community Conservation Program Plan take permits/authorizations.

1.1 MSCP Coordination Efforts

MSCP Subarea Plan IA section 14.0 requires coordination among the Wildlife Agencies, a term used collectively for the U.S. Fish and Wildlife Service (USFWS) and the California Department of Fish and Wildlife (CDFW). Meetings are scheduled regularly with these Agencies. Coordination also regularly occurs with regional technical groups, other jurisdictions, stakeholders and the public. The County continues to actively participate in regularly-scheduled MSCP group meetings including the San Diego Association of Governments (SANDAG) *TransNet* Environmental Mitigation Program (EMP) Working Group, San Diego Management and Monitoring Program Working Group, MSCP Annual Workshop, Quarterly Acquisitions coordination meetings, South County Land Managers Working Groups, San Dieguito River Park Joint Powers Authority, San Diego River Conservancy, the Otay Ranch Preserve Owner/Manager (POM) Executive/Policy Committees, the Otay Valley Regional Park (OVRP) Executive/Policy Committees, the OVRP citizens advisory committee, California Habitat Conservation Plan Coalition and the U.S. Border Management Task Force Group. The various MSCP group meetings consist of members from USFWS, CDFW, Bureau of Land Management (BLM), local/governmental participating agencies, private stakeholders, and members of the general public. The primary objectives of these group meetings are to discuss land acquisitions,

management, monitoring methodologies, conservation techniques, and to provide meaningful educational information and create public awareness regarding the importance of habitat conservation and how it adds to quality of life.

MSCP Subarea Plan implementation also requires coordination among County departments. Regularly scheduled internal meetings regarding MSCP issues are held at the County to facilitate and ensure consistency in implementing the MSCP Subarea Plan. Department of Parks and Recreation (DPR) and Department of Planning and Development Services (PDS) MSCP staff regularly meet to discuss issues and exchange ideas. Additional coordination meetings are held with the Department of Public Works and the Department of General Services.

2.0 SUBAREA PLAN UPDATES

The following discussion summarizes work completed on the proposed amendments and projects processed with Wildlife Agency staff concurrence during this reporting period.

2.1 Quino Checkerspot Butterfly Amendment

In 2015, the County initiated preliminary work on the amendment to add the Quino checkerspot butterfly, a federally listed species, to the list of species covered by the MSCP Subarea Plan. Survey and other preliminary work was conducted in 2016 as the County evaluates adding the species to the MSCP Subarea Plan.

2.2 MSCP Amendments

There were no amendments to the MSCP agreement, nor any major or minor subarea plan amendments processed in 2016.

2.3 MSCP Map Update

The map associated with the Subarea Plan was originally approved on October 22, 1997. It has been updated through the years to reflect changes in designations for Major and/or Minor Amendment areas to either "take authorized" or "preserve" designations. The Subarea Plan Map reflects changes to the South County Subarea Plan approved by the County and Wildlife Agencies. There were no minor nor major amendments nor boundary line adjustments processed that required updating the map.

During the preparation of the 2013 annual report, the Wildlife Agencies raised questions regarding the validity of certain MSCP mapping designations that have existed for several years on the Subarea Plan Map, specifically within the South County Segment. In response, a comprehensive review was initiated in winter 2014 to clarify MSCP designations countywide and to ensure they are accurately reflected on the Subarea Plan Map.

Discussions regarding the appropriate designation for areas within Otay Ranch Village 14 are on-going.

3.0 HABITAT GAINS AND LOSSES

The Subarea Plan goal is to assemble a Preserve that includes approximately 98,379² acres in a configuration that will meet the goals of the MSCP and the Subarea Plan. The Preserve includes a combination “baseline” and “conserved land.” Baseline is open space acreage that was already conserved at the time of Plan adoption (Table 1).

Table 1. MSCP Baseline Preserve

Baseline Land Owner	Acreage
County	5,466 ³
Federal and State	32,600
Private	7,755
Total Baseline Preserve	45,821

Conserved lands are lands acquired since 1997 to build out the Preserve, per the Subarea Plan and associated Implementing Agreement (IA). Conserved land occurs in two ways: private mitigation⁴ (Table 2), and public and local/non-profit acquisitions that complement the baseline and/or mitigation lands (Table 3).

Table 2. MSCP Private Mitigation – Goal 33,713 acres

Mitigation type	Preserve Goals	2015 Preserve Total	2016 Preserve Gains	2016 Preserve Total
Dedicated Private Hardline	11,563	3,678	277	3,955
Privately Dedicated Lands	22,150	1,967	33	2,000
TOTAL	33,713	5,645	310	5,955

² The original preserve conservation goal in the MSCP Subarea Plan was 101,268 acres, which was reduced to 98,379 acres when 2,890 acres of PAMA land was annexed into the City of Chula Vista.

³ An additional 5 acres have been added into County baseline as a result of the audit exercise described in Section 3.1.

⁴ Mitigation primarily includes conservation gains secured through the County’s permitting processes for (a) hardline agreements identified in the Subarea Plan and (b) new developments and other regulations (see Sect.3.3.)

3.1 Public Acquisitions Audit - Per Implementing Agreement Section 14.6

The County and the Wildlife Agencies conducted an audit of the conserved land resulting from public acquisition, and the results of that effort are included in Table 3, MSCP Public Acquisitions.

Table 3. MSCP Public Acquisitions – Goal 18,850 acres

Agency	Acres Funded In Preserve ¹	2016 Preserve Total Acres Owned and Managed	Complimentary Conservation Owned and Managed ²	Total Acres in the Subarea Plan Boundaries Owned and Managed
Federal				
FWS*	3,089 ³	8,728	2,624	11,352
BLM	1,830	1,830	2,609	4,439
Subtotal	4,919	10,558	5,233	15,791
State*	11,457⁴	14,422	11,272	25,694
County	3,780⁵	6,475⁶	0⁷	5,590⁸
Local Partners	2,606	3,162	712⁹	3,874
Grand Total	22,762	34,617	17,217	50,949⁸

*Federal and State acreage is from FWS data

¹ Agency Funded Acquisitions purchased with agencies' own funds.

² Formerly known as "Outside of the Preserve."

³ 216 acres purchased with State Funds.

⁴ 3,555 acres purchased with Federal Funds.

⁵ Includes 205 acres County has purchased within other jurisdictions (Cities of San Diego and Chula Vista).

⁶ Includes 689 acres that the County manages within other jurisdictions (Cities of San Diego and Chula Vista).

⁷ County Complimentary Acquisition is zero; 2,479 acres were accepted in the 2016 Preserve, includes 5 acres as baseline;

⁸ Does not include 885 acres that the County manages within other jurisdictions (Cities of San Diego and Chula Vista.)

⁹ County-funded assistance of local partners acquisitions have been added into local partners 2016 Preserve.

As part of the audit, the County and the Wildlife Agencies reviewed lands acquired and/or managed by the County to date, including lands within the Subarea Plan boundary but outside of the PAMA. The Wildlife Agencies have agreed that 2,474 acres of County land conserved outside the PAMA, which contribute to the biological goals of the MSCP, will now be included in the Preserve and count toward the 98,379-acre goal. An additional 5 acres was also

agreed to be added to the surrounding “baseline” acreage. See Appendix 1 “Additions to the Preserve” for information on the 2,479 acres. The HabiTrak database managed by the State has not yet been updated to reflect these changes. The Wildlife Agencies further agree that acres acquired/funded by the County but owned by other local/non-profit entities and reported in HabiTrak (556 acres) will not be included in the County line item as they have been in the past, but will instead be reported on the line with the other local partners (non-profit) acquisitions. Both County and non-profit/local acquisitions have been reported into HabiTrak regularly since Plan inception.

Section 10.4 of the IA provides that the estimated acreages to be conserved through public acquisition “are approximate since the amount, timing, and location of land conserved through regulations, private mitigation and public acquisition are not exactly known.” Progress has been made toward assembling the Preserve envisioned by the County’s Subarea Plan. The Subarea Plan estimated that 18,850 acres would need to be conserved through public acquisitions to adequately assemble the Preserve. The Subarea Plan provided that the Federal/State proportion and the County proportion of the lands needed for acquisition would likely be accomplished by a 50/50 split (9,425 acres acquired by the County with local funds and 9,425 acres acquired with Federal and State funds), and it was assumed that whoever acquired the land would manage the land. The County of San Diego and the Wildlife Agencies have worked together to ensure that the acquisition obligation of the Plan will be completed and the land managed, although it will not occur exactly as envisioned. A portion of County of San Diego acquisitions were acquired either partially or wholly with State and Federal grant funds and continue to be managed by the County; similarly, the County funded a portion of acquisition lands now owned and managed by local/non-profit partners. The Wildlife Agencies have exceeded their estimated acquisition target of 9,425 acres in outright ownership and management; furthermore, their acquisitions, local/non-profit partners and the County’s acquisitions far exceed the 18,850 public acquisitions goal.

Per HabiTrak data of all gains (Appendix 8; explained in greater detail in Section 3.4) and including the 2,479 acres of County acquisitions included in the Preserve, collectively, the

County and the Wildlife Agencies and local/non-profit partners own and manage 77,552 acres of Preserve lands in South County including “baseline” conservation land. Although the actual numbers in Tables 1, 3 and 4 indicate a higher acreage, Wildlife Agency acquisitions in Appendices 3 A-C may include “baseline” conservation lands. This discrepancy will be corrected in future reports. Thus, 19 years into the 50-year plan, the County’s Subarea Plan Preserve is approximately 79 percent complete as measured in acres. This quantitative composition represents the minimum acreage agreed upon and required in the Subarea Plan. The qualitative composition of the Preserve, in contrast, includes not only specific acreage but includes the preservation of specific wildlife corridors and habitat types. The County and the Wildlife Agencies are now looking at potential gaps within the PAMA and Preserve to guide future acquisitions and private mitigation opportunities to ensure a functioning MSCP preserve.

3.2 Acquisitions Overview

The County has acquired a net⁵ of 7,031 acres (Appendix 2) during the first 19 years of this 50-year program, of which 6,475 acres are within the Preserve. In addition, private conservation partners have acquired 3,873 acres, of which 3,162 acres are in the Preserve. Preserve land acquired by the County and local conservation partners total 9,636 acres; Federal and State partners (Wildlife Agencies) have acquired 24,980 acres (Table 3 and Appendix 3 A-C). Due to the results of the 2016 audit of acquisitions, acreage numbers are reported differently than previous annual reports. Reporting decisions made during the 2016 audit and shown below will provide the foundation for future annual reports.

3.3. Habitat Gains and Losses within the Pre-Approved Mitigation Area

During 2016, the MSCP Subarea Plan reported habitat gains within the Preserve through acquisitions and dedications of mitigation land via the discretionary permit process. Habitat losses, due to permitted development within the PAMA and the plan area, are also reported.

⁵ Net after the deduction of land sold for County policy I-138 as shown in Table 7 in Section 3.6, and Appendix 2

Mitigation gain and habitat loss may be associated with the following types of development projects for which approvals were granted and reported in certificates of inclusion (COIs) during the reporting period:

- Private projects (tentative maps/tentative parcel maps) with final map approval;
- Projects that have been issued grading permits;
- Building permits exempt from the Biological Mitigation Ordinance (BMO);
- New agricultural clearing exempt from the BMO;
- Lands acquired by the County and governmental agency for preservation;
- Approved mitigation bank lands with at least one credit used; and
- Changes to the Subarea preserve boundaries, including amendments and annexations, of which there were none in 2016.

During this reporting period there were 555 acres of habitat gain within the MSCP Preserve (Appendix 4). In 2016, County acquisitions in the Preserve totaled 23 acres consisting of coastal sage scrub habitat (Appendix 5); the acquisition is south of one of the County's San Vicente Connection properties⁶ and adds to San Vicente connection. The Nature Conservancy acquired 10 acres of coastal sage scrub in Proctor Valley inside PAMA and 42 adjacent acres of complementary acquisition (portion of the acquisition outside of PAMA, Appendix 6). Another 239 acres of complementary acreage adjacent to a Preserve linkage was acquired by Endangered Habitats League and may eventually become part of the Preserve. Remaining acreage gains in the Preserve were associated with federal and state acquisitions (212 acres) and private land dedication required as a condition of private development (310 acres).

Losses in 2016 in the preserve were 30 acres, part of a total of 228 acres impacted by development projects within the South County Subarea plan area (Appendix 7).

⁶ Property had been referred to as Reams-Thomsen; In 2016 it was added to Habitrak as it was missed in 2003 when acquired.

Since 1998, cumulative gains and losses within the Preserve total 77,552⁷ acres and 1,341⁸ acres, respectively. The cumulative habitat gain within the Preserve represents 79% of the Plan's conservation goal of 98,379 acres (Table 4). The County is committed to continuing to work with the Wildlife Agencies to deliver a functional preserve.

Table 4 represents an overview of the full Preserve build-out to date. It includes baseline preserved lands, lands conserved through private land development mitigation, and lands publicly acquired.

The table shows the MSCP plan goals, acreages reported last fiscal year, preserve gains, and the overall total for 2016. In addition, this year includes a column to account for the additions that were accounted for through the audit process described above. As discussed above, the total Preserve is 77,552 acres (per HabiTrak and County Preserve Adjustment) or 79 percent of the overall Preserve assembly goal. Federal and State acres may be duplicative between Baseline and Conserved Lands-Public Acquisitions; therefore, the 2016 Preserve Total is reported based on the HabiTrak data of all gains plus 2,479 acres of County acquisitions that are now included as Preserve.

⁷ Public Agency manual accounting (Tables 3, 4 and 5)

⁸ HabiTrak Appendix 8

Table 4. Summary of MSCP Preserve Assembly Status

Acreage	Preserve Goals	2015 Preserve ¹	2016 Preserve Adjustments ²	2016 Preserve Gains ³	2016 Preserve Total
Baseline Preserve					
County	5,461	5,461	5	N/A	5,466
Federal and State	32,600	32,600 ⁴	N/A	N/A	32,600
Private	7,755	7,755	N/A	N/A	7,755
Total Baseline Preserve	45,816	45,816	5	N/A	45,821
Conserved lands – Private Mitigation					
Dedicated Private Hardline	11,563	3,678	N/A	277	3,955
Privately Dedicated Lands	22,150	1,967	N/A	33	2,000
Total Private Mitigation	33,713	5,645	N/A	310	5,955
Conserved lands – Public Acquisitions					
Federal and State	18,850	16,882 ⁴	7,886 ⁴	212	24,980 ⁴
County		3,978	2,474	23	6,475
Local/non-profit partners		2,596	556	10	3,162
Total Public Acquisitions	18,850	23,456	10,916	245	34,617
Preserve Total	98,379	74,917⁴	10,921⁴	555	86,393⁵

¹ County acquisitions adjusted to reflect previously reported Preserve acreage.

² Complementary acquisitions agreed to be included per the 2016 audit review.

³ Gains in acreage in 2016 via private mitigation and public acquisitions.

⁴ Federal and State acreage reported in “Conserved lands – Public Acquisitions” may overlap with Baseline Preserve acreage; This discrepancy will be adjusted in future reports.

⁵ Preserve total is 77,552 as described in Section 3.1, above.

3.4 HabiTrak

CDFW maintains the Habitat Tracking Reporting (HabiTrak) toolset designed to help track habitat lost and conserved over time due to public and private development projects. Appendices 4 (Summary of MSCP Gains), 7 (Summary of MSCP Losses), and 8 (Summary of Habitat Losses and Gains) are prepared by the CDFW maintained software and are known as HabiTrak Tables and also show the complementary/“Outside the Preserve” acquisitions.

Tables 3 and 4, were prepared using County and Wildlife Agency data and reflect the cumulative habitat gained within the PAMA as 77,552 acres. The cumulative gain within the Subarea indicated by HabiTrak is 75,073 acres and a loss of 1,341 acres (Appendix 8). The County-maintained gains data currently differs from the HabiTrak numbers until the HabiTrak numbers can be updated. HabiTrak currently does not reflect the 2,474 acres accepted into the Preserve in 2016 and would not reflect the 893 acres (net) owned and managed (as part of a Joint Exercise of Powers Agreement) by the County in the cities of San Diego and Chula Vista. The numbers also differ because County numbers accurately show year-to-year manual County updates and subtraction of acres used for mitigation land policy credits (Section 3.6). The Wildlife Agencies' Tables (Appendix 3A-C) also are tracked manually and may differ from HabiTrak. The manual accounting tables are corrected when errors are noted and audits performed. The HabiTrak database and report formats have undergone updates and changes, and the numbers are corrected once inputs are received. County staff manually updates data annually and uses this information for the MSCP Annual Report. Nineteen years into the 50-year plan, the cumulative habitat gain (conserved lands as calculated by public agencies) since 1998 represents 77 percent of the Plan's conservation goal.

3.4.1 Rough Step: Preserve & Assembly by Vegetation Type

The majority of Preserve habitat gains have occurred within the PAMA, while the majority of loss due to development has occurred outside of the PAMA, indicating that overall, conservation goals are being met to create a functional preserve (Tables 5 and 6).

Table 5. Habitat Gains by Segment Since 1998

Segment	Outside Preserve (acres)	Inside Preserve (acres)	2016 Total (acres)
Lake Hodges	490	2,904	3,394
North Metro-Lakeside-Jamul	6,842	10,157	16,999
South Metro-Lakeside-Jamul	11,058	12,924	23,982
South County	1,740	9,843	11,583
Total	20,130	35,828	55,558

Table 6. Habitat Loss by Segment Since 1998

Segment	Outside Preserve (acres)	Inside Preserve (acres)	2016 Total (acres)
Lake Hodges	2,431	91	2,522
North Metro-Lakeside-Jamul	3,700	576	4,276
South Metro-Lakeside-Jamul	3,032	537	3,569
South County	541	127	668
Total	9,704	1,331	11,035

Per Section 4.4 (Overall Land Conservation for the Metro-Lakeside-Jamul Segment) of the MSCP Subarea Plan and Section 14 of the Implementing Agreement, conservation of each vegetation type within the Metro-Lakeside-Jamul segment is presented in Appendix 9, Habitat Conservation Accounting Model, HabiTrak table. The data indicates that conservation is proceeding in rough step with development. The rough step analysis for Cores and Linkages, Critical Biological Resource Areas and Anticipated Conservation levels for Species is being prepared for the 2017 report. It should be noted that existing vegetation maps used to develop baseline conditions in HabiTrak are regional in nature and may not be fully consistent with actual on-the-ground conditions in all cases. Additionally, through the discretionary permitting

process, the California Environmental Quality Act (CEQA) requires the identification of potential impacts. In this context, the amount of habitat lost resulting from development and the corresponding habitat preserved through mitigation is identified. These losses and gains are accounted for in this annual report. Other projects that do not require a discretionary permit (ministerial action) are not subject to CEQA but the lost habitat is accounted for in this report.

3.5 Mitigation Banks

Two types of mitigation banks are in the Subarea Plan per IA Section 9.13: 1) formal banks approved by the Wildlife Agencies and 2) banks that existed prior to adoption of the IA. Information on mitigation banks approved by the Wildlife Agencies or others can be found at <https://www.wildlife.ca.gov/Conservation/Planning/Banking>.

Since the adoption of the MSCP, several mitigation banks have been established in the County to be used to mitigate impacts to sensitive biological resources resulting from the County Department of Public Works' construction, improvement and maintenance projects. The banks are not used for mitigating private development projects. Use of credits is determined based on quality of habitat impacted in relation to quality of habitat available and is subject to approval by the U.S. Army Corps of Engineers, USFWS, CDFW and Regional Water Quality Control Board. The banks include the Sweetwater River Off-Site Mitigation Area, Boden Canyon Mitigation Bank, Old Castle Road Mitigation Bank, Singing Hills Conservation Bank, and Rancho San Diego Mitigation Bank. The status of these banks is shown in Appendix 10.

3.6 Mitigation Land Policy

In January 2010, the Board of Supervisors adopted Board of Supervisors Policy I-138 which does not replace nor supersede Board Policy I-117 that was included as part of the original MSCP approvals. Discussions with the Wildlife Agencies continue on this policy. This policy describes the County's program for acquiring land and making it available to mitigate the biological impacts of public and private projects through the sale of mitigation credits. The policy authorizes DPR to administer the sale of mitigation credits. Board Policy I-138 sets forth

methods by which the value of the mitigation credits may be determined and requires applicants to pay for the valuation. The policy also requires DPR to calculate an amount for annual stewardship costs (an endowment) and to add this amount to the cost of the mitigation credits. Each transaction requires the execution of a Certificate of Mitigation and Purchase Agreement. DPR maintains a database to track the conveyance of mitigation credits to purchasers and the application of mitigation credits to development projects. County numbers accurately show year-to-year manual County updates and subtraction of acres used for mitigation land policy credits (Table 7 and Appendix 2). Table 7 shows revenue generated in 2016 and since adoption in the Subarea Plan from the sale of mitigation credits in accordance with the Mitigation Land Policy. The County considers requests to use the policy on the preserves listed below according to GIS mapping of the vegetation available on those sites, the portion of which generally are acquired with County funds.

Table 7. 2016 Mitigation Land Policy

Project	South County Credits Sold	South County Credit Cost	Endowment	Preserve	Date
LOSSAN double tracking and Mid-Coast light rail project	10	\$350,000	\$630,644	Tijuana River Valley Regional Park*	7/11/2016
San Vicente Rd Improvement (SC portion)	8.04	\$254,562	\$85,650	Lawrence & Barbara Daley	6/10/2015
Central Avenue Drainage Improvement and Woodside Flood Control	0.37	\$14,800	\$2,220	Lawrence & Barbara Daley	1/21/2014
Swiss Park Staging Area	1	\$23,300	\$6,000	Furby East Otay Mesa	1/17/2013
San Ysidro Freight Yard Improvement Project	1.75	\$61,250	\$10,500	Tijuana River Valley Regional Park*	2/14/2013
Five Dept. of Public Works projects (Tavern Rd, Wing Ave., Woodside Ave., Emery Rd., Jamacha Blvd.)	2.45	\$98,000	\$14,700	Lawrence & Barbara Daley	10/2/2012
Tuscan Ridge	1.07	\$16,050	\$4,060	Stelzer	5/3/2011
Dict.Hill-MariaAve	0.31	\$7,225	\$1,240	Lakeside Linkage	6/16/2011
	24.99	\$825,187	\$755,014	\$1,580,201	
	Total credits	Total income	Total Endowment	Total Income & Endowment	

*Park is outside of the County Subarea Plan Area but is within the City of San Diego MSCP

3.8 Clearing for Single-Family Residences on Small Parcels

Per Section 4.3.4.2 of the MSCP Subarea Plan, parcels which are no larger than 10 acres and occur within the MSCP Subarea Plan boundaries that were zoned for single-family dwellings and contained a dwelling unit as of October 22, 1997, are exempt from the clearing regulations.

Within the PAMA, parcels existing as of January 1, 1997 that did not contain a dwelling unit as of October 22, 1997, that are no larger than 10 acres and are zoned for single-family residential uses, are allowed to grade and clear up to two acres, provided that clearing and grading of such two-acre portions does not interfere with achieving the goals and criteria of the MSCP Subarea Plan. Grading and clearing on the remaining portion of the parcel must meet the mitigation requirements of the Biological Mitigation Ordinance (BMO).

Outside the PAMA, grading and clearing on parcels no larger than 10 acres, zoned for single-family residential uses as of January 1, 1997 and without a dwelling unit as of October 22, 1997, shall be permitted on a total of five acres. Clearing the remainder of the parcel shall be subject to the requirements of the MSCP Subarea Plan and BMO. Clearing for fuel management, as required by the appropriate fire regulations or by a Fire Marshall, are not counted in computing the number of acres cleared.

Private landowners of parcels zoned for single-family residences and that did not have a dwelling unit as of October 22, 1997, can apply for a Certificate of Inclusion (COI) for their property. COIs are issued for two or five acres of clearing or grading depending on if the parcel is in the PAMA or not, and 10 acres if a house existed on the parcel before October 1997, even if the landowners intend to clear less. The MSCP Subarea Plan does not have a limit for how many total acres can be cleared. Appendix 11 shows COIs issued in 2016 for clearing habitat on parcels 10 acres or smaller.

3.9 Agricultural Exemption

Section 4.3.4.3 of the MSCP Subarea Plan allows up to 3,000 acres of clearing and grading for agriculture without mitigation requirements of the MSCP Subarea Plan and the BMO. When clearing and grading of habitat reaches 3,000 acres, all other clearing and grading for agriculture will be subject to the mitigation requirements of the MSCP Subarea Plan and the BMO. Private landowners can apply for a COI for agricultural clearing and grading until the 3,000 acres is reached. COIs issued for agricultural clearing in the Subarea since the MSCP Subarea Plan was approved are listed in Appendix 12, a cumulative reporting. In 2016, COIs were issued on a total of 11 acres. To date, the County has issued COIs covering 1,224 acres for agricultural clearing or 41 percent of the 3,000 acres.

3.10 Building Permit COIs

The PDS Building Division issues COIs that allow habitat clearing of the amount needed to construct whatever is approved by the Building Permit. The acreages of habitat allowed to be cleared for these projects in 2016 are enumerated in HabiTrak Summary of Losses Appendix 7 and cumulatively included in cumulative HabiTrak Summary of Habitat Losses and Gains accounting in Appendix 8.

4.0 MANAGEMENT AND MONITORING

Management and monitoring of Preserves within the MSCP Subarea Plan is an important element of the Preserve success and the overall success of the MSCP Subregional Plan. The overall management goal of the MSCP Subregional Plan and the MSCP Subarea Plan is to ensure that the biological values of natural resources are maintained or improved over time where land is preserved as part of the MSCP through acquisition, regulation, mitigation or other means. In conformance with Section 10.9 (Preserve Management), Section 10.10 (Preserve Management Program) and Section 14.5 (Biological Monitoring) of the Implementing Agreement, the County is responsible for managing and monitoring the land it owns or acquires as well as ensuring that other private mitigation lands dedicated to the County within the Preserve are managed and monitored consistent with MSCP. Figure 1 and its legend graphically illustrate County properties referenced in Sections 4.1 through 4.5.

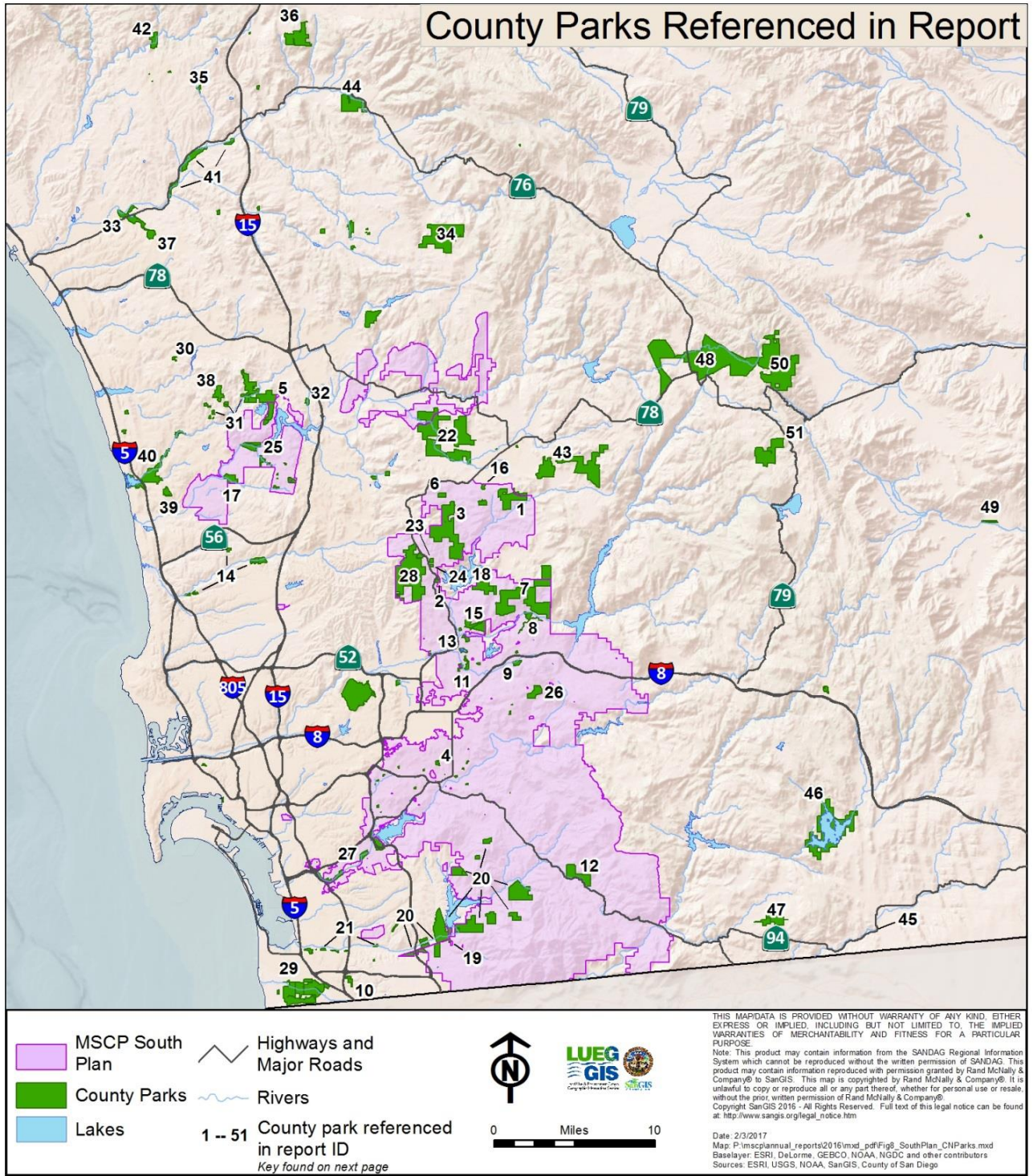


Figure 1. Map of County properties

Map Key to Figure 1: County Parks Referenced in Report

South County (SC) Subarea Plan		Draft North County (NC) Subarea Plan	
1	Barnett Ranch Preserve*	30	Diamond Trail (TET) Property
2	San Vicente Connection (Berkley/Hering)	31	Escondido Creek Preserve
3	Boulder Oaks Preserve	32	Felicita Park
4	Damon Lane Park	33	Guajome Park
5	Del Dios Highlands Preserve*	34	Hellhole Canyon Preserve
6	Dos Picos Park	35	Live Oak Park
7	El Capitan Preserve*	36	Mount Olympus Preserve
8	El Monte Park	37	Rancho Guajome Adobe Park
9	Flinn Springs Park	38	Sage Hill Preserve
10	Furby-North Property	39	San Dieguito Park
11	Lakeside Linkage Preserve	40	San Elijo Lagoon Ecological Reserve
12	Lawrence & Barbara Daley Preserve	41	San Luis Rey River Park
13	Lindo Lake Park	42	Santa Margarita Preserve
14	Los Penasquitos Canyon Preserve	43	Simon Preserve
15	Louis A. Stelzer Park	44	Wilderness Gardens Preserve
16	Luelf Pond Preserve		
17	Lusardi Creek Preserve	Future East County (EC) Subarea Plan	
18	Oakoasis Preserve	45	Campo Stone Store
19	Otay Lakes Park	46	Lake Morena Park
20	Otay Ranch Preserve	47	Potrero Park
21	Otay Valley Regional Park	48	Santa Ysabel Preserve
22	Ramona Grasslands Preserve*	49	Vallecito Park
23	San Vicente Connection (Reams-Thomsen)		Volcan Mountain Wilderness
24	San Vicente Connection (Navarro)	50	Preserve
25	Santa Fe Valley Preserve	51	William Heise Park
26	Stoneridge Preserve		
27	Sweetwater Regional Park		
28	Sycamore Canyon / Goodan Ranch Preserve		
29	Tijuana River Valley Regional Park		

** Portions of preserves are also in North County Plan*

4.1 Preserve Management of County Lands

Ongoing stewardship and adaptive management activities performed in 2016 on County lands in addition to standard management practices such as park ranger patrols, are described below and summarized in Appendix 13.

Barnett Ranch Preserve

County staff continued weekly watering and monitoring of 50 oak trees recently planted within the Preserve. Staff regularly checked the trees for signs of Gold Spotted Oak Borer (GSOB) beetle. Three mature coast live oak trees were removed from the west end of the Preserve; five coast live oaks and five sycamore trees will replace them in 2017. Approximately 20 feet of vegetation was maintained/mowed as a fire break. Control of invasive species (puncturevine and goathead weed) was accomplished through pesticide spraying and removal around the 0.5 acre staging area. Two “No Dumping” signs were installed at the staging area. Approximately 200 feet of trail restoration was performed, and stormwater Best Management Practices (BMPs) were implemented to prevent erosion.

Boulder Oaks Preserve

Biological monitoring included a bat survey conducted by United States Geological Survey (USGS) and San Diego Natural History Museum (SDNHM) staff, during which the Townsend’s big-eared bat was observed (See Section 4.5). Staff removed approximately 12 coast live oaks from the Preserve, which were infested with GSOB or stressed from drought. To compensate, 10 large (24” box) coast live oak trees were planted in a 2-acre oak grove. In addition, three new “No Hunting” signs were installed along the main road, and two “No Public Access” signs were posted at the entrance. Invasive species such as Dyer’s rocket, artichoke thistle and bulrushes were removed on approximately 7 acres.

Del Dios Highlands Preserve

Through a SANDAG-funded project, SDNHM and USGS sampled a population of Encinitas baccharis at the Preserve in November, with the aim of assessing the genetics of

populations across San Diego County. The results will directly contribute to their conservation and management in the MSCP Management Strategic Plan Area. Approximately 1 mile of trail was assessed and maintained, and stormwater BMPs were implemented to prevent erosion. Staff also removed one acre of mustard weed, eucalyptus trees, and non-native grasses, including wild oat, bromes and filaree. About 140 feet of existing fuel modification zones, in three different areas of the Preserve, are maintained annually.

El Capitan Preserve

Approximately 3 miles of trail was restored and stormwater BMPs were implemented to prevent erosion and 44 trail markers were installed. Neighboring property owners SDG&E, Silverwood, and the San Diego River Foundation worked to control exotic invasives on their land and on 1 acre of El Capitan Preserve. County staff cleared two large fallen trees. Approximately 100 hours of environmental education programming were offered to the public.

El Monte Park

Approximately 4.5 miles of trail was assessed and maintained, and stormwater BMPs were implemented to prevent erosion. A 1.4 acre mitigation site was created at the northwest corner of Park property to mitigate for native plants disturbed during trail maintenance. The site was planted with California yarrow, three types of milkweed, common butterfly bush, California lilac, western redbud, California fuschia, San Diego monkey flower, small-leaf Virgin's-Bower, common passion flower, island currant, and three types of sage. Ongoing efforts to eradicate invasive plants such as African fountain grass and tree tobacco continue throughout the park. Four acres of brush were maintained as fire break. Mature oak trees were treated for GSOB. Three large California oak trees, one infected with GSOB and others stressed from drought, were removed from the Park and replaced with 10 new oak trees. Fifty seedlings were planted at the Park's staging area from an oak seedling nursery established by Park staff from acorns harvested from Park oak trees.

Flinn Springs Park, specifically 33 acres of MSCP Preserve (property acquired in 2015)

To prevent illegal access and motorized vehicle use within Preserve land, a total of nine regulation signs were installed. To reduce the potential spread of wildfire, approximately 0.5 acre of vegetation was mowed as a fire break on the northeast perimeter where the MSCP land abuts private property. Approximately 0.5 mile of trail was restored and stormwater BMPs were implemented to prevent erosion. Castor bean was removed on 0.1 acre in the eastern section.

Furby-North Property

County staff worked with California Conservation Corps to remove approximately half an acre of stinknet, an invasive plant species. Research conducted within the Property included vernal pool monitoring, rare plant mapping and coastal cactus wren monitoring (see Section 4.5). In addition, a TransNet EMP grant was awarded in 2015 to begin an access control project, involving the installation of signs, fences and gates to prevent unauthorized access and off-road vehicle use (See Section 4.4). Over the course of 2016, approximately 80% of the project was completed. Once access control measures are installed, the County will coordinate with SANDAG's off-road enforcement program to increase patrols and enforce County regulations.

Lakeside Linkage Preserve

USGS conducted ongoing cactus wren monitoring research, which began in the spring of 2012 and will continue through the summer of 2017 (see Section 4.5). Approximately 1.5 miles of trail was restored and stormwater BMPs were implemented to prevent erosion. Additionally, three acres of fire break were installed and two hazardous trees were removed. Assessment and planning to deter vehicle access was performed; in early 2017 damaged fencing will be repaired and new signs installed at trail entry points.

A 5-year management and monitoring project, funded by a *TransNet* EMP grant (Section 4.4), to restore five acres of cactus wren habitat at the Preserve was completed in 2016. The project included habitat improvements (dethatching and weed removal) and planting of coast

prickly pear cactus and cholla cactus thickets within approximately five acres of coastal sage scrub habitat on southwest-facing slopes in the central part of the Preserve.

Lawrence and Barbara Daley Preserve

In 2016, USGS continued monitoring coastal sage scrub habitat and coastal California gnatcatcher occupancy as part of a multi-year study (see Section 4.5). Approximately 5 acres of invasive plants were removed along the creek on the west end of the Preserve. Additionally, mandated fire clearance is maintained each summer on 3 acres near adjacent homes.

Lusardi Creek Preserve

In response to damage caused by the 2007 and 2014 fires, County staff has been restoring 3.1 acres of coastal sage scrub and riparian habitat. Approximately one acre of habitat restoration was completed in 2016. Other activities performed in 2016 include California gnatcatcher bird counts and nesting observations performed by USGS researchers (see Section 4.5), just under an acre of fuel management, and removal of two trees posing a hazard to the public.

Oakoasis Preserve

Biologists studied and monitored butterflies, wildflowers, bats, and mountain lions in the Preserve (see Section 4.5). Approximately one mile of trail restoration was performed and stormwater BMPs were implemented to prevent erosion. Preserve staff cleared two large fallen trees from the trail, as well as approximately 1,000 square feet of poison oak and exotic weeds from trails and from the native planted landscape within the campground. The Preserve also offered more than 14 environmental education programs and special events in 2016.

Otay Lakes County Park

This Park features a native plant garden, of which 2 acres of native species such as milkweed, Mexican sage, white sage, toyons, Cleveland sage and butterfly bush were planted in 2016. As a result, the Park has seen a dramatic increase in monarch butterfly populations

visiting the garden. In April, Project Wildlife released six rehabilitated raccoons into the Park. Five hazardous trees were removed. Park staff installed 300 feet of fencing and four interpretive kiosks/signs and offered five environmental education programs.

Otay Valley Regional Park

Work began on a 3-year 2015 SANDAG-funded mitigation project to restore and enhance 3 acres of coastal cactus wren habitat (see Section 4.4). This grant will be supplemented by a second grant awarded in 2016. This project will complement the County's Salt Creek Coastal Cactus Wren Habitat Enhancement/Restoration Project completed in 2014. Approximately 8 miles of trail was assessed and maintained in western OVRP. In September, County staff and members of the U.S. Forest Service, USFWS, and UC Irvine assessed the Park for evidence of the polyphagous/Kuroshio shot hole borer, but no evidence was found. The OVRP Concept Plan, the vision document for the Park, was updated in 2016 to reflect developable areas in the City of Chula Vista's plan and a change in designation of two areas from recreation to open space. The result is a decrease in impacts to biological resources.

Louis A. Stelzer Park

Biologists conducted butterfly and wildflower surveys to learn more about their distribution within San Diego County (see Section 4.5). Additionally, Park staff planted 53 one-gallon sized oak trees and 1,000 acorns in the picnic area. Staff cleared approximately 400 square feet of exotic grass (wild oats) and removed approximately four large oak trees that were infected with GSOB. One mile of trail was restored and stormwater BMPs were implemented to prevent erosion. Biologists contracted by SDG&E found a new invasive plant species, Sahara mustard, growing in the park for the first time this year. Park staff has been diligent in removing it when spotted. The Park suffered a loss of 3,000 square feet chaparral vegetation due to a fire caused by an automobile accident, which will be restored. Park staff offered 350 environmental education programs.

Stoneridge Preserve

The County removed 0.25 acre of invasive species such as eucalyptus, palms and grape vines from the Preserve, and provided fuel breaks near adjacent properties. Park staff also installed four Preserve regulation signs. USGS continued monitoring coastal sage scrub habitat and coastal California gnatcatcher occupancy as part of a multi-year study (see Section 4.5).

Sweetwater Regional Park

Approximately 2 miles of trail was restored and maintained and an old pedestrian bridge was replaced with a pre-fabricated multi-use bridge over the Sweetwater River. Approximately 0.45 acre of riparian habitat will be planted as mitigation for impacts associated with the trail restoration and bridge replacement project. California Conservation Corps crews conducted maintenance of fuel breaks in the Park adjacent to Willow Road and private residences. Staff also maintained fuel breaks near private residences and pruned trees in the campground.

Sycamore Canyon/Goodan Ranch Preserve

The County performed baseline biological surveys between March and October within 140 acres acquired in the Preserve in 2015. Rush-like bristleweed, a California-ranked rare plant, was found for the first time within this land. Restoration of cactus habitat was performed on 0.36 acre of land, as well as installation of two new wildlife drinking stations. Invasive species such as mustard, star thistle, Italian thistle and artichoke thistle have been removed from 1.1 acres. On-going restoration efforts to mitigate for damaged habitat were performed around SDG&E Powerlink towers by the firm's contractors. Preserve staff installed 200 feet of fencing to prevent OHV access, and 17 new signs—posting the speed limit and emergency contact information—were placed along the Preserve's main road for public and wildlife protection. Ongoing trail rehabilitation to prevent erosion and protect adjacent habitat occurred throughout the Preserve.

Tijuana River Valley Regional Park

The Park was heavily infested with the Kuroshio/Polyhagous Shot Hole Borer, an invasive beetle which impacted many of the tree species in the Park (see Sections 4.3 and 4.5). As a result, the County removed nearly 100 hazardous trees. The County also removed 2.5 acres of multiple invasive plant species including tamarisk, castor bean, arundo, chrysanthemum, tumbleweed and stinknet throughout the Park. At Dairy Mart Overlook, invasives were removed on 0.5 acre. The area was then hydroseeded and oaks were planted. Park staff offered 50 hours of environmental education programs.

As part of the mitigation and monitoring reporting program for the recently completed 22.5 miles of formal trail in the Park, ongoing habitat restoration of 30 acres is occurring. A new 2.5 acre active restoration site was installed on Spooner's Mesa. An additional 30 acres of trail closures were initiated and maintained throughout the year; activities included installing barricades, weeding, and seeding of native plants.

In 2016, DPR was awarded a 3-year grant from the California River Parkways Grant Program to treat and remove invasive species such as tamarisk, and plant native species near the Bird and Butterfly Garden (see Section 4.4).

4.2 Resource Management Plans

The County prepares Resource Management Plans (RMPs) to document biological and cultural resources onsite and to provide guidance on management and preservation of the resources within Preserves in accordance with Area Specific Management Directives pursuant to the requirements of the MSCP Subarea Plan Framework Management Plan (County 2001). RMPs for all County owned/managed Preserves within the South County Subarea Plan and completion dates or date of most recent update follow: Lawrence and Barbara Daley (2011), Barnett Ranch(2004), Boulder Oaks (2008), Del Dios Highlands (2011), El Capitan (2009), El Monte (2009), Furby-North (2012), Lakeside Linkage (2010), Lusardi Creek (2009), Oakoasis (2009), Stelzer (2009), Stoneridge (2013), Sycamore Canyon/Goodan Ranch (2013), and the Tijuana River Valley Regional Park (2007). No new RMPs were completed nor updated in 2016.

4.3 Management and Monitoring Partners

The regular management, monitoring and invasive species removal performed by County rangers, staff and contractors is augmented by other organizations and projects at various parks and Preserves, including those detailed below. Only County MSCP Parks and Preserves are mentioned, but many research projects listed below extend well outside of the MSCP Subarea. County Parks and Preserves fully outside of the Subarea are not in bold in the heading.

Oakoasis Preserve, Dos Picos, El Monte, Flinn Springs, Louis A. Stelzer, Lake Morena, Potrero, and William Heise Parks

Goldspotted Oak Borer (GSOB) Monitoring/Treatment – USDA Forest Service monitored the efficacy of GSOB treatments applied in 2015 by the County of San Diego in 2015. Oak trees previously tagged and treated by County Parks will continue to be monitored until July 2017, by recording the level of injury from the GSOB.

Tijuana River Valley Regional Park, Guajome, Rancho Guajome Adobe, Live Oak, and San Luis Rey River Parks, San Elijo Lagoon Ecological Reserve, and Wilderness Gardens Preserve

Biocontrol of Shot Hole Borers - Dr. Akif Eskalen of UC Riverside (UCR) began a 5-year project in July 2016 to research local biocontrol options and develop a phylogenetically informed risk model for incidence and spread of *Fusarium* spp. and their insect vectors -- polyphagous and Kuroshio shot hole borers (PSHB/KSHB) -- throughout riparian areas of southern California. UCR biologists are monitoring pest and disease establishment/spread and performing experiments to determine whether trunk injections of systemic pesticides can be effectively deployed within critical reproductive hosts to protect highly valued trees from infestations.

Sycamore Canyon/Goodan Ranch and Boulder Oak Preserves, Louis A. Stelzer Park, Tijuana River Valley Regional Park, Furby-North Property, Simon, Escondido Creek, Mount Olympus and Wilderness Gardens Preserves

Rare Plant Monitoring– SANDAG contracted with AECOM and Conservation Biology Institute (CBI) biologists to coordinate and assist SDMMMP with monitoring the following documented rare plant populations on conserved lands in San Diego County: willow monardella, Orcutt’s bird’s beak, Encinitas baccharis, and Otay tarplant. Monitoring of these species began in April 2016 and was completed in November 2016.

Ramona Grasslands Preserve

Raptor Foraging Study - The County and SANDAG, through a Memorandum of Understanding, completed the Ramona Grasslands Preserve Eagle and Raptor Foraging Study. The goal of the study was to collect baseline information on eagle/raptor foraging over a 3-year period (September 2013 – August 2016) within the Preserve to provide a better understanding of species abundance and distribution within the Preserve. SANDAG funded the second monthly survey once per month over the 16-month period of May 2015 through August 2016 which included a field biologist conducting and recording raptor point count field surveys.

4.4 Grant Funded Management and Monitoring Projects

In addition to regular on-going maintenance and monitoring, the County receives grants for stewardship. Five SANDAG *TransNet* Environmental Mitigation Program (EMP) grants are described below. One, a previously awarded EMP grant for the Lakeside Linkage Preserve project, reached completion in 2016. Two new EMP grants were awarded to the County in 2015 and were initiated in 2016. Lastly, in 2016 two new EMP grants were awarded as well as a California River Parkways Grant.

Lakeside Linkage Cactus Wren Habitat Restoration

The County received a grant from the *TransNet* EMP in 2010 to restore cactus wren habitat at Lakeside Linkage Preserve (Preserve). The Preserve is one of the five identified in the Comprehensive Monitoring Plan (CMP) for 2016, which prioritizes preserve level monitoring to allocate funding where it is most needed (see Section 4.6). The grant included a 5-year management and monitoring period; the second half was completed in July 2016. The restoration project is considered complete.

The County performed monthly maintenance of two restoration areas within the central property of the Preserve. Pedestrian trespass, weed growth, herbivory and parasitism are currently under control and do not appear to be significantly affecting the plantings. Vegetation cover estimates revealed that over half of the planting plots had cacti with joints above 1 meter, showing that the plantings are approaching the height necessary for cactus wren nesting. A male cactus wren heard singing offsite during Year 4 monitoring efforts was not seen onsite in 2016. However, cactus wren are known to inhabit other locations in the Lakeside Linkage (outside of the County Preserve) and the improved habitat within the County Preserve should assist with the recovery of this species within the linkage. Cactus wren monitoring at Lakeside Linkage Preserve is part of the Comprehensive Monitoring Plan. Per the Plan post-restoration avian point counts and nesting bird surveys will be performed monthly from March through July every other year for a total of ten years after restoration.

Otay River Valley Cactus Wren Habitat Restoration

Contractors began a 3-year SANDAG-funded mitigation project in 2016 to restore and enhance three acres of coastal cactus wren habitat through invasive species control/treatment, shrub thinning, planting native vegetation, and focused cactus wren monitoring. The goal of this project is to increase the amount of suitable habitat and improve connectivity for the coastal cactus wren. It will complement the County's Salt Creek Coastal Cactus Wren Habitat Enhancement/Restoration Project, completed in 2014 and funded by in previous *TransNet* EMP grant cycles. The coastal cactus wren restoration program in the Otay River Valley and Salt

Creek area conducted by the County and City of Chula Vista address the immediate needs of coastal cactus wren where loss and degradation of existing wren habitat has occurred due to historical cattle grazing, increase of invasive plant species, unauthorized off-road vehicle use, and drought and vegetation succession processes. During 2016 the site was treated with herbicide and weeds removed, coast cholla and coast prickly pear cuttings were collected and planted in addition to purple needle grass. Vegetation surveys, photographic monitoring and cactus wren surveys were also performed.

In 2016, the County was awarded a second SANDAG grant to supplement the grant described above. The grant will provide for fencing and deter off road activities within the restoration area. Work on the supplemental grant will begin in 2017.

Furby North Property Access Control Project

In 2015, a Transnet EMP grant was awarded to control unauthorized access to the Furby North Property (Property) with fences, gates and signs. Installation in 2016 was 80% complete. As a result of steep topography, completing the fencing was delayed so the County could obtain alternate access and SANDAG extended the term of the grant agreement. Work to complete the fencing was scheduled to resume in early 2017 and be complete Spring 2017. Once the fence and gate installation is complete, the County will coordinate with the SANDAG off-road enforcement program to increase patrols enforcing County regulations on the Property. The project protects sensitive vegetation communities on-site, including maritime succulent scrub, Diegan coastal sage scrub and vernal pools, and benefits sensitive species including the coastal cactus wren and the federally threatened California gnatcatcher. It also allows for future active restoration of unauthorized trails as outlined in the RMP.

Quino Checkerspot Butterfly Restoration and Enhancement Grant

In 2016, the County was awarded a SANDAG grant for OVRP. The 2-year grant will fund habitat restoration of a Quino habitat patch that is split by a road, by closing redundant dirt roads and installing fencing to discourage off road vehicles. It will be implemented in 2017.

Tijuana River Valley Regional Park Invasive Removal, Restoration and Interpretive Project

In 2016, the County was awarded a grant from the California River Parkways Grant Program to supplement the ongoing habitat restoration activities along the Tijuana River Corridor within in the Tijuana River Valley Regional Park. The 3-year grant will be used for the treatment and removal of approximately 2 acres of invasive tamarisk trees and other non-native plants. Native species commonly known to the river valley will be planted to restore and improve the river corridor's biological habitat. In addition, interpretive panels will be placed along the trail highlighting the importance of the restoration of native plant species relative to the health of the river corridor and native wildlife that inhabit the valley. Project implementation began in 2016.

4.5 Research on County Property

A significant amount of research has occurred within County-owned Preserve lands through the County's right-of-entry permit process. In 2016, these studies focused on species such as mountain lion, mule deer, golden eagle, coastal California gnatcatcher, coastal cactus wren, burrowing owl, least Bell's vireo, southwestern willow flycatcher, arroyo toad, and other species in and out of the Plan Area. Several studies are summarized below. Only County MSCP Parks and Preserves are mentioned,* but many research projects listed below extend well outside of the Preserves in this Subarea Plan. *Preserves fully outside of SC MSCP are not bold.

Boulder Oaks and Sycamore Canyon/Goodan Ranch Preserves

Mountain Lion Study (UC Davis) – The study, which began in September 2012 and ended in September 2016, included setting camera stations to detect mountain lion activity and setting bait stations and cage traps if mountain lions were detected. UC Davis researchers fitted captured mountain lions with GPS collars and took blood samples for DNA analysis. Findings indicate that annual survival rates average 56% (lower survival than in most hunted populations), and primary mortality sources are depredation permits, vehicle collisions, and illegal killings. As a result, mountain lions west of I-15 are severely genetically restricted. The data from this research was provided to the San Diego Association of Governments (SANDAG)

San Diego Management and Monitoring Program (SDMMP) to help analyze the functional connectivity of the Multiple Species Conservation Program Subarea Plan preserve system for mountain lions

Sycamore Canyon/Goodan Ranch, Oakoasis and Boulder Oaks Preserves, San Vicente Connection

Southern Mule Deer Pellet Study (USGS) – The study, conducted for SANDAG, entailed collecting scat/pellets from southern mule deer. The study sought to assess movement and gene flow near State Route 67 between Lakeside and Poway at the Scripps Poway Parkway and Poway Road crossings of the highway. It began in April 2015 and was completed in June 2016. Findings from this study suggest that movement and gene flow of southern mule deer across State Route 67 is rare but possible⁹, per data published in the journal “Western Wildlife” on July 21, 2016.

Lawrence and Barbara Daley, Santa Fe Valley, Boulder Oaks, Ramona Grasslands, Lusardi Creek, Los Penasquitos Canyon, Santa Margarita, Wilderness Gardens, Escondido Creek, and Santa Ysabel Preserves, San Luis Rey River, William Heise and Guajome Parks

Arroyo toad research (USGS) - The study, which began in May 2015 and ended in September 2016, sought to understand the factors driving arroyo toad occupancy at a regional level and the effects of drought and urbanization on arroyo toad. The data will be used to develop a framework for regional monitoring of the arroyo toad across conserved lands within San Diego County. USGS recorded presence of native and nonnative aquatic reptiles, amphibians, and fish, as well as habitat suitability for arroyo toads.

⁹ Mitelberg, A., & Vandergast, A. G. (2016). Non-Invasive Genetic Sampling of Southern Mule Deer (*Odocoileus hemionus fuliginatus*) Reveals Limited Movement Across California State Route 67 in San Diego County. *Western Wildlife*, 3, 8-18.

Lakeside Linkage and Otay Ranch Preserves, Sweetwater and Otay Valley Regional Parks, and Furby North Property

Coastal Cactus Wren Study (USGS and The Nature Conservancy, funded by SANDAG) – The goals of the study include: 1) evaluate the quality of previously mapped cactus patches; 2) map cactus patches on previously inaccessible lands; 3) conduct presence/absence surveys in the Otay and Sweetwater areas; and 4) conduct nest monitoring activities in a subset of occupied territories if funding permits. The study will provide information on the state of cactus wrens and cactus habitat in southern San Diego County that can be used to inform decisions regarding current and future needs for maintaining viable cactus wren populations in coastal California. The study began in March 2011 and will extend through September 30, 2017.

Sweetwater, Tijuana River Valley and Otay Valley Regional Parks, Louis A. Stelzer and Damon Lane Parks, San Vicente Connection, Santa Fe Valley, Ramona Grasslands, Sycamore Canyon/Goodan Ranch, Lusardi Creek, Lawrence and Barbara Daley, Stoneridge, El Capitan, Otay Ranch, Santa Margarita, Wilderness Gardens and Sage Hill Preserves, and Diamond Hill (TET) Property

Coastal California Gnatcatcher Monitoring (USGS) – This study monitors coastal California gnatcatcher to determine the status of gnatcatchers on conserved lands in San Diego County and to understand how gnatcatcher occupancy is related to coastal sage scrub plant composition, cover, and structure. Research began in early 2015 and continues through September 2019.

Sweetwater, Tijuana River Valley and Otay Valley Regional Parks, Otay Ranch Preserve, Lake Morena, Vallecito and William Heise Parks

Least Bell's Vireo/Southwestern Willow Flycatcher Surveys (USGS) – USGS conducted presence/absence surveys for least Bell's vireo and southwestern willow flycatcher in order to document their status on multiple drainages in San Diego County. Research began in early 2015 and will continue until August 1, 2017.

Dos Picos, Lindo Lake and El Monte Parks, Tijuana River Valley and Otay Valley Regional Parks, Lawrence and Barbara Daley, Boulder Oaks, Sycamore Canyon/Goodan Ranch, Luelf Pond, Lusardi Creek, Del Dios Highlands and Escondido Creek Preserve

The Damselfly Research Project (University of San Diego, USD) – The study was designed to understand 1) the mechanisms that assemble and structure damselfly communities, and 2) the overall effects of drought and climate change on aquatic communities. USD researchers conducted observational studies and field experiments to examine how environmental factors affect mechanisms promoting coexistence of damselfly species and how drought-associated environmental factors affect aquatic communities as a whole. The results of this study provided monitoring information on the diversity and abundances of damselflies throughout San Diego County. Research was conducted from June of 2015 through August of 2016.

El Monte Park, Otay Valley Regional Park, Boulder Oaks, Ramona Grasslands, Oakoasis and Wilderness Gardens Preserves, and Campo Stone Store Museum Property

Bat Study (San Diego Natural History Museum) - The purpose of this study was to collect data on the distribution of pallid bats and Townsend's big-eared bats throughout San Diego County. This information will help determine the status of these species by referencing past records of their distributions. Wildlife biologists recorded bat calls and used mist-nets to capture specimens, then identified species, took general measurements and obtained photo documentation before release. This study was performed between May and October of 2016.

Del Dios Highlands, Sycamore Canyon/Goodan Ranch and Hellhole Canyon Preserves, Louis A. Stelzer, Felicita and San Dieguito Parks, Escondido Creek and Wilderness Gardens Preserves, and San Elijo Lagoon Ecological Reserve

Harbison's Dun Skipper, Hermes Copper Butterfly and Blister Beetle Project (San Diego State University) – This SANDAG-funded project began in March 2013 and continues through 2017 and addresses the conservation and management of Hermes copper butterfly and Harbison's dun skipper. Hermes copper butterfly research involves observational surveys for

the butterfly and larval host plant mapping to better understand smaller populations towards the northern portion of this species' range. Harbison's dun skipper surveys involve documentation of the presence or absence of the species, genetic sampling of adult skippers and assessment of their status in the County. Little is known about this species, but it is suspected to be extremely rare and localized in San Diego County. During the surveys, blister beetles are being collected to better understand the species.

Ramona Grasslands, Barnett Ranch, El Capitan, Boulder Oaks, Hellhole Canyon, Santa Ysabel, and Volcan Mountain Wilderness Preserves, and Lake Morena Park

Golden Eagle Occupancy Surveys (USGS) – Biologists from USGS and Bloom Biological, Inc. performed golden eagle breeding, occupancy and abundance surveys as a part of ongoing collaborative research with U.S. Department of Fish and Wildlife (USFWS), SANDAG, and California Department of Fish and Wildlife (CDFW). This research will provide a better understanding of the current distribution, status, foraging requirements, and population characteristics. Work began in November 2014 and will continue through July 2017.

Ramona Grasslands and Barnett Ranch Preserves

Burrowing Owl Site Management (San Diego Zoo Institute for Conservation Research) – Since 2011, the San Diego Zoo Institute for Conservation Research has worked with interagency support (SDMMP, SANDAG, CDFW, USFWS, County of San Diego, and Caltrans) to develop and implement a management plan for the burrowing owl. In 2016, researchers assessed soil suitability, vegetation cover, and presence of predator/prey species in order to identify top potential locations for burrowing owl management.

Tijuana River Valley Regional Park

Kuroshio Shot Hole Borer Monitoring (John Boland/SWIA) - To reduce the spread of the Kuroshio shot hole borer (KSHB) in native riparian forests, Southwest Wetlands Interpretive Association (SWIA) began a research project that involves monitoring infestation rates, levels of forest damage and seedling regrowth from August 2016 through August 2019. Preliminary findings indicate that the KSHB has continued its spread within riparian forests in Tijuana River

Valley, where it is severely impacting willow trees. Fortunately, many willow trees heavily damaged in 2015 resprouted from their stumps in 2016. This resprouting shows that the KSHB does not kill all of the willow trees that it infests; the new low-canopy forests that these resprouts have created may provide essential breeding habitat for the endangered least Bell's vireo during 2017. Continued research will examine the spread of the beetle, riparian recovery, and potential best management practices for prevention and eradication.

Ramona Grasslands Preserve

Fairy shrimp sampling (SDSU & USD) – Biologists at SDSU and University of San Diego (USD) collected San Diego fairy shrimp from three vernal pools as part of ongoing projects funded by SANDAG and USFWS. The purpose of this research is to validate and expand on results from a previous publication which demonstrated that the endangered San Diego fairy shrimp hybridizes with the non-endangered Lindahl's fairy shrimp. Sampling took place in January and February 2016. Continued research will aim to develop further understanding of how hybridization between the two fairy shrimp species can be best characterized and managed.

4.6 Preserve Biological Monitoring of County Lands

The primary goals for biological monitoring is to collect high quality, accurate data to detect population trends, changes in habitat quality, and wildlife corridor functionality to guide adaptive management for the preserves.

During this reporting period, the County continued robust implementation of the Comprehensive Monitoring Plan (CMP). The CMP prioritizes preserve level monitoring to allocate funding where it is most needed. It includes focused goals and objectives for target resources and detailed monitoring protocols.

In 2015, the County performed habitat and resource specific surveys and monitoring within 10 preserves identified in the CMP. In 2016, the CMP identified five Preserves for monitoring: Boulder Oaks, Lusardi Creek, Lakeside Linkage, Sycamore Canyon/Goodan Ranch

and Ramona Grasslands Preserves. The County performed Rare Plant and Quantitative Vernal Pool Vegetation Monitoring, Cactus Wren Habitat Restoration, Arroyo Toad Threat Assessments, Burrowing Owl Surveys, Residual Dry Matter Monitoring and Stephens' kangaroo rat (SKR) surveys.

The CMP was developed based on several points that emerged from a 2012 workshop hosted by San Diego State University researchers, and attended by a diverse group of stakeholders. In this workshop, land managers, municipal and County staff, and resource agency personnel reviewed current literature and results of regional monitoring studies, and used their expertise to identify ways to improve management and monitoring within regional conservation plans in San Diego County (Deutschman and Strahm 2012). The key points are to: (1) connect monitoring data to management at the preserve level and the region, (2) improve the utility of monitoring protocols so that they can inform management actions, (3) prioritize funding for monitoring and management, (4) develop, test, and refine monitoring protocols as an ongoing process, and (5) derive benefits of using conceptual models that relate stressors and threats to key species and communities for focusing monitoring and management efforts.

Rare Plant and Quantitative Vernal Pool Vegetation Monitoring – Sycamore Canyon/Goodan Ranch, Boulder Oaks, Lusardi Creek and Ramona Grasslands Preserves

Thirteen sensitive plant monitoring plots were established within the CMP Preserves in 2016. Ten monitoring plots for San Diego thornmint were established within the Sycamore Canyon/Goodan Ranch Preserve. Two monitoring plots for San Miguel Savory were established in Boulder Oaks Preserve. One monitoring plot for variegated dudleya was established in Lusardi Creek Preserve. Twenty vernal pools were monitored within the Ramona Grasslands.

Sycamore Canyon/Goodan Ranch Preserve

Within the 10 monitoring plots established for the San Diego thornmint population, a total of 17,770 San Diego thornmint plants were detected. The entire population of San Diego thornmint within Sycamore Canyon/Goodan Ranch is estimated to be in the range of 20,000 to

30,000 plants. Additionally, approximately 41 acres of clay lens habitat with the potential to support San Diego thornmint populations were mapped.

Overall, the habitat of thornmint is heavily under threat from the invasive purple false brome and tocalote. In a few instances, relatively intact areas of San Diego thornmint with high cover of small-flowered bindweed and Palmer's grappling hook and a low cover of invasive plants were observed.

Boulder Oaks Preserve

Within the two monitoring plots for San Miguel Savory established in the Boulder Oaks Preserve, a total of 139 plants were mapped and tagged with individually numbered aluminum tags. An additional 45 seedlings were also counted.

Lusardi Creek Preserve

Within the one monitoring plot for variegated dudleya established in Lusardi Creek Preserve, a total of 199 variegated dudleya individuals were mapped. This is the initial survey for variegated dudleya on the Preserve, so the establishment of the monitoring plot and determining the number of plants provides baseline information for future monitoring surveys.

Ramona Grasslands Preserve

Quantitative vegetation monitoring was conducted for 20 vernal pools within the Ramona Grasslands. The quantitative vegetation monitoring followed the protocols detailed in the Ramona Grasslands Preserve Area Specific Management Directives (CBI 2007). Overall, nonnative cover was greater than native cover throughout the pools. The highest number of nonnative species recorded in a pool was 19 and the highest number of native species was 13. The majority of pools contained at least one vernal pool indicator species. The vernal pool indicator species observed within pools were water pygmyweed, annual hair grass, toothed downingia, pale spike-rush, sand spike-rush, hairy clover fern, prairie plantain, and dwarf woolly-marbles. Sign of cattle grazing was moderate in most pools and disturbance was

minimal. Managed grazing occurs within the Preserve to conserve the biological resources associated with the clayey grasslands supporting vernal pools. Cattle grazing reduces the amount of thatch and invasive plants within the vernal pools. Grazing occurs year round within the Preserve except in the DPW Vernal Pool Mitigation Parcel in the northeast corner of the southeast portion of the Preserve. DPR closes the gate to this parcel once vernal pools are inundated to prevent trampling within the vernal pools. The remaining vernal pools within the Preserve are spread out and cannot be closed off from grazing when vernal pools inundated. The benefit from grazing cattle within the vernal pools outweighs the minimal disturbance from hoof prints.

Cactus Wren Habitat Restoration and Monitoring – Lakeside Linkage Preserve

The County received a grant from the *TransNet* EMP in 2010 to restore cactus wren habitat at Lakeside Linkage Preserve (Section 4.4). The purpose of the restoration effort was to encourage dispersal and expansion of adjacent extant populations of San Diego cactus wrens. The project 5-year management and monitoring period was completed July 2016. It is included in this CMP section to detail the monitoring that occurred as part of the CMP schedule.

Habitat improvements took place at two plant establishment areas within the central property of the Preserve, and included installation of coastal prickly pear cactus and coastal cholla cactus, as well as dethatching and weed removal within approximately 5 acres of coastal sage scrub habitat on west and south-facing slopes. Monthly maintenance of the two restoration areas consisted of weeding, herbicide application and fence installation along illegal trails in the north and south restoration areas to redirect pedestrians from walking through planting areas. In March and June 2016, fences were observed to be intact with no pedestrian activity in the cactus restoration areas. Non-native plant cover estimates in 2016 varied from zero to 10 percent, with an average of 1.6 percent non-native cover. Overall, weeds were controlled extremely well within the cactus plots and in the surrounding restoration areas. Surveys also revealed that herbivory and parasitism are low and do not appear to be significantly affecting the plantings. Shrubs were removed from cactus plots in January 2016, to

remove potential avenues for predators to access cactus plantings and prevent herbivory.

Vegetation monitoring surveys in 2016 found a moderate cover of native annuals including popcorn flower and rancher's fiddleneck. California sagebrush seedlings were developing throughout the northern restoration area. Vegetation cover estimates within the two restoration areas were performed on July 28, 2016. While estimated cover did not increase between Years 4 and 5, over half of the planting plots surveyed in 2016 had cacti with joints at over 1 meter, showing that they are approaching the height necessary for cactus wren nesting.

A total of four avian point count surveys were conducted during the first half of 2016, during which at least two family groups of California gnatcatcher were observed within the Preserve. The male cactus wren heard singing offsite during Year 4 monitoring efforts was not seen onsite in 2016. However, cactus wrens inhabit other locations in the Lakeside Linkage (outside of the County Preserve) and the improved habitat within the Lakeside Linkage Preserve should assist with the recovery of this species within the linkage.

Arroyo Toad Threat Assessments – Ramona Grasslands Preserve

Arroyo toad assessments were performed during 2016 at Ramona Grasslands Preserve. During these surveys, portions of Santa Maria Creek were observed to be wetted and occupied by arroyo toad tadpoles and metamorphs. Recruitment looked strong and large numbers of tadpoles and metamorphs were observed. Arroyo toad metamorphs and tadpoles were observed in the wetted creek bottom immediately north and south of where the Ramona Municipal Water District (RMWD) property overlaps the creek.

Arroyo toads appeared to be absent from upstream pools further south, and these pools were occupied by western toads and bullfrogs. Arroyo toads were also absent from downstream pools further north.

During the surveys, potential threats to arroyo toad were observed. Bullfrogs and mosquitofish were observed in several sand or silt bottom pools in the upstream reach, and several granite plunge pools in the downstream reach. Both species may have negative impacts

on arroyo toad through competition or predation. As their distribution was patchy, and they were mostly absent from the middle of the survey reach, they do not appear to be in danger of excluding arroyo toad from the Preserve. The population and location of bullfrogs will continue to be monitored annually. If impacts to arroyo toads are noted, an eradication program will be implemented first on County owned lands. A second priority will be adjacent lands supporting ponds with bullfrogs.

Burrowing Owl Surveys – Ramona Grasslands, Boulder Oaks and Sycamore Canyon/Goodan Ranch Preserves

In addition to the previous surveys, the grassland areas of Ramona Grasslands, Boulder Oaks, and Sycamore Canyon/Goodan Ranch Preserves were inspected for presence of nesting burrowing owl, with a focus on presence or abundance of ground squirrels and suitable burrow complexes.

No burrowing owls were observed during the surveys. Incidental sightings were reported by park rangers, but these observations were not confirmed. It is likely that these reports were of migratory birds, as they appear to have been observed in March 2016.

Boulder Oaks Preserve

Biologists surveyed two distinct grassland areas one in the southern valley, and a second in the recently acquired northern portion. The southern grasslands of Boulder Oaks are not currently being grazed. Few ground squirrel burrows were observed in this area in May 2016. As few suitable burrows were identified in this area, no more focused effort was expended in this area. The north grasslands, north of the ranger station have had heavy grazing and high activity by ground squirrels. Avian point count surveys were conducted in this grassland in 2013 and this area has frequent traffic by the onsite rangers; burrowing owl would likely be incidentally detected if present in the northern grasslands, so further survey effort was not conducted.

Sycamore Canyon/Goodan Ranch Preserve

A large grassland area (~80 acres) lies in the northern portion of the Preserve. Few ground squirrels were observed in this area in May 2016. Much of the grasslands in this area are on heavy clay soils (with many rare clay-soil plants), which may be less attractive to ground squirrels as burrowing habitat. Further survey effort was not conducted in this area.

Ramona Grasslands Preserve

Burrowing owl habitat assessments and surveys were conducted on four days from late April through mid-July. The focus of the assessments and surveys was to visit the perceived highest quality habitat including burrow complexes with good visibility. Threats to burrowing owl observed during the field surveys consist of coyotes, corvids, and red-tailed hawks. Recent studies have presented that common ravens are a primary cause of nest predation. Ravens were observed nesting in Santa Maria Creek.

Residual Dry Matter Monitoring – Ramona Grasslands Preserve

Residual dry matter (RDM) surveys were performed in October 2016 at 53 predetermined vegetation monitoring plots within the Preserve. The majority of the 53 plots fell within their target RDM values. One plot fell below its target values; two others had higher RDM values than the target values for the plots. The rancher will be directed to move cattle into or out of the respective management units to increase or decrease grazing activities.

The following plant species were observed to be the most common within or adjacent to the monitoring plots in 2016: redstem filaree, doveweed, saltgrass, wild oats, short-pod mustard, coast goldenbush, western ragweed, Russian thistle, vinegarweed, red brome, ripgut brome, soft chess, purple needlegrass, and California buckwheat. Two other rare plants were observed: Southern tarplant, California Rare Plant Rank (CRPR) 1B.1, and graceful tarplant, CRPR 4.2.

While conducting RDM monitoring in 2016, no new invasive weeds were found. Overall,

fewer weeds were seen this year than last year, with the exception of Russian thistle. Invasive thistles were not seen in several locations where they had been previously observed; this is likely due to the extreme drought conditions.

Stephens' Kangaroo Rat Surveys – Ramona Grasslands Preserve

During this reporting period, the County performed a resource specific survey for the monitoring of Stephens' kangaroo rat (SKR) at the Ramona Grassland Preserve between November 13 and November 17, 2016 per the Comprehensive Monitoring Plan.

Twenty-eight randomly selected plots within the SKR grazing management units within the Preserve (management units 2A, 2B, and 3A and the 3-acre SKR management area) were evaluated for SKR suitability and potential occupancy by SKR through monitoring that began in November 2016 and is scheduled to continue through November 2017. Specifically, the habitat suitability evaluation documented several characteristics including: percent bare ground, overall vegetation cover, presence of ground squirrel and gopher activity, and presence of potential kangaroo rat indicators (e.g. scat, burrows, trails, and tracks). Of the 28 plots evaluated, 10 plots exhibited potential kangaroo sign and trapping was performed.

Trapping results included a total of 20 SKR captured, 10 female and 10 male. SKR were trapped in SKR grazing management units 2A, 2B, and 3A. A total of 16 Dulzura kangaroo rat (DKR), 9 female and 7 male, were also captured. Other species captured during the trapping included San Diego pocket mouse, deer mouse, and San Diego desert woodrat.

Potential threats and stressors noted during the 2016 SKR monitoring effort included predation and dense plant litter/vegetation. Dense vegetation is an obstacle for SKR in that it inhibits foraging, migration, gene flow, and leaves SKR more vulnerable to predation. In 2017 DPR will increase grazing in the SKR grazing management units to decrease plant litter/vegetation. Coyotes and several hawk species were observed frequently within the Preserve.

4.7 Otay Ranch Preserve – County and City of Chula Vista owned land

The County and City of Chula Vista jointly work as the Otay Ranch Preserve POM and are responsible for implementing the RMP management and monitoring strategies within the Otay Ranch Preserve. Management and monitoring of the Preserve is funded through the collection of assessments from Community Facility District 97-2 (CFD 97-2) administered by the City of Chula Vista.

Primary tasks performed in 2016 included surveys for coastal California gnatcatcher, least Bell's vireo, Quino checkerspot butterfly, and focused rare plants. Invasive species such as long-beak filaree, wild oats, black mustard, short-pod mustard, and tocalote were treated within 45 acres of potential Quino habitat. Additionally, stinkwort was controlled using hand removal and chemical methods on approximately 6.5 acres. A contracted biologist conducted site visits on a regular basis to document any access issues, illegal dumping, previously undocumented species of plants and wildlife, weeds, and overall health of the Preserve.

In November, Preserve staff installed vehicle barriers along the Minnewawa Truck Trail on the Dulzura parcel which was showing evidence of trespassing, off-road vehicle use and target shooting.

4.8 Preserve Management of Private Mitigation Lands

Twenty (20) projects within the MSCP Subarea Plan have Resource Management Plans (RMPs) (Appendix 14). RMPs are required as a condition of development entitlements. RMPs are approved by PDS and require submission of annual monitoring reports typically focusing on the resource attributes of that specific location (habitat type) detailing the monitoring and habitat management activities conducted within the previous year. Controlling and directing or prohibiting public access through fencing, signage and patrolling is another component of the RMPs. Annual reports are typically due January 31st of each year, therefore many reports for the 2016 season had not yet been received when this report was prepared.

The following is a summary of the annual 2015 RMP monitoring reports received in 2016.

4.8.1. Non-Compliant Private RMP Reporting

PDS, in collaboration with the office of County Counsel, continues to work with non-compliant site managers and/or land owners to achieve compliance. Efforts to date include correspondence to the land manager/owner clearly outlining the requirements of the RMPs and their legal obligations for compliance. PDS continues to evaluate options to achieve compliance. These RMPs include: RMP 98-001, Bernardo Lakes; RMP 99-003 “East Gorge” Salviati-Golem; RMP 02-01 McCrink; RMP 02-003 Maranatha chapel; RMP 03-002 El Apajo; RMP 06-005 Artesian Trail.

4.8.2 Delinquent Private Monitoring Reports

In contrast to the non-compliant RMPs above, the following RMPs have a history of annual monitoring reports being submitted and generally are in conformance of the provisions of the RMPs but, as of early 2016, the annual reports for 2015 activities have not been received. (Most annual reports for the 2016 season were due 1/31/17, after this report was drafted.) PDS has drafted letters to each of these land managers/owners reminding them of their obligations under the approved RMPs and request they submit their reports immediately. In some situations, a two-year report may be preferable. These RMPs include: RMP 99-001 Ralphs Family (reported in 2014); RMP 99-002 4S Ranch (reported 2014-2015 season); RMP 99-005 Woodridge (reported in 2014); RMP 01-001 Blossom Valley (reported in 2014); RMP 10-002 Rancho Santa Fe (reported in 2014); RMP 10-003 East Otay Mesa (reported in 2014); and RMP 12-002 Sloane Canyon (reported in 2014). Information on monitoring activities conducted in 2014 was reported in the 2015 Annual MSCP Report.

4.8.3 2016 Annual Report Private RMP Review

The following reports were submitted and determined by PDS staff to be in compliance with the approved RMP. However, some of the land managers must improve in their future reports by providing greater financial clarity, monitoring results and general compliance with the provisions of the approved RMP. WA are routinely copied on all correspondence from the County to the land managers regarding annual monitoring reports wherein greater detail of the

report review results can be obtained.

RMP 99-004 Crosby at Santa Fe Valley – Starwood

An annual report is due on March 1st, the report for 2016 (due 3/1/17) had yet to be received. The 2015 report was submitted in compliance with the RMP and without concerns raised by PDS staff.

RMP 03-001 Onyx Ridge

Per the approved RMP, annual report submittal is to commence when grading begins. To date, grading of the site has not commenced; therefore, annual reports are not yet required. The Escondido Creek Conservancy has been providing email updates of management activities that are substantially compliant with the approved RMP; however, more formal submittal and documentation of species surveys and observations will be required once annual report submission commences.

RMP 05-004 Greenhills Ranch

An annual report is due on January 31st; the report for 2016 had yet to be received when this report was drafted. The 2015 report was submitted in compliance with the RMP and included the Second Annual Report for the Revegetation for the Green Hills Ranch Stockpile. PDS requested additional information be submitted with the next annual report regarding the cactus restoration plan, required monitoring, and restoration efficacy. Restoration of the Stockpile also requires additional information from the land manager in the next annual report to verify the area is restored consistent with the approved revegetation plan.

RMP 08-001 Bridges – Santa Fe Creek

An annual report is due on January 31st, the report for 2016 had yet to be received. The 2015 report was submitted in compliance with the RMP and without concerns raised by PDS staff.

RMP 11-002 Lonestar

An annual report is due on January 31st, the report for 2016 has yet to be received. While an annual report was submitted for 2015, the RMP has been completed however it has not been finalized. Conservation of approximately 36.7 acres of the 62.2-acre preserve has been identified as mitigation for non-native grassland and burrowing owl for the Corrections Corporation of America (CCA) project (MUP 06-074) which was transferred to International Industrial Park, Inc. as part of major use permit (MUP 98-001). The remainder (25.5 acres) is available for future mitigation. The RMP has not been finalized, and the Mitigation Agreement has not been implemented. Upon request of further use of the site for mitigation purposes, the RMP and agreement (demonstrating long-term funding) must be finalized.

RMP 12-003 Trevi Hills High Meadow Ranch

The 2016 report was expected Jan 31, 2017, after this report was drafted; therefore it had not been received nor reviewed. The 2015 report was submitted in compliance with the RMP but some areas of the report were deficient. PDS staff asked the land manager to provide more information from the report on self-reported 'budgetary constraints,' greater coordination and documentation for site stakeholders, maintenance of approved access routes, future budget projections, and a map of observed sensitive species found on-site.

4.8.4 Mitigation Banks

RMP 11-001 Martz Rancho Las Pampas

The site received USFWS and CDFW approval to be amended into the South County Subarea Plan in November 2012. The owner received USFWS approval as a mitigation bank. Given the oversight of the USFWS, the County no longer expects nor requires an annual RMP to be submitted. This site is now known as the "Ramona Grasslands Mitigation bank".

5.0 FINANCIAL SUMMARY

The County is responsible for funding acquisition, management and monitoring of lands within the SC Plan. The costs associated with these activities may be funded through local and regional sources. The County primarily uses General Fund monies to acquire land or leverage funding to acquire additional preserve lands. Additionally, the County Board of Supervisors annually appropriates funding for ongoing management and monitoring efforts. Management and monitoring efforts for conveyed lands in the Otay Ranch Preserve, which are jointly owned and managed by the County and the City of Chula Vista, is funded through Community Facilities District CFD 97-2 administered by the City of Chula Vista. Lastly, the County has sought additional funding through various grant programs such as those offered through the SANDAG *TransNet* Environmental Mitigation Program (EMP). As discussed in Section 3.1, the Wildlife Agencies completed an audit per Section 14.6 of the Implementing Agreement. As a result of information exchanged, a column denoting the funding sources for each County tracked acquisition is included in Appendix 2

5.1 County Contribution

In 2016, as in years past, the County Board of Supervisors appropriated \$10 million for acquisition of open space throughout the adopted Subarea and planned North County Plan and East County Plan areas. During this reporting period, in the South County Subarea, the County acquired 23 acres to add to San Vicente Connection lands east of State Route 67. Since 1998, the County has invested \$35.5 million which leveraged nearly \$34 million of other funding to acquire 7,031 acres in the MSCP Plan Area, including 556 acres managed by County partners.

The Board of Supervisors allocates funding for ongoing management and monitoring efforts on approximately 38,000 acres within the Subarea and future North County Plan and East County Plan areas, 19,000 acres of which were acquired since the Subarea plan was adopted. The average cost for stewardship (operations and maintenance) is \$156 per acre for all of the County's 38,000 open space acres, approximately 14,000 acres in the Subarea. Therefore

of the roughly \$5.9 million spent for open space management and maintenance, a rough calculation is that \$2.2 million is spent annually for management and maintenance in the Subarea. Cost for MSCP management and maintenance are intertwined in the County DPR operating budget. In coming years, additional funding has been proposed and DPR is looking for ways to isolate and track the MSCP expenses. The location, fire management and species monitoring requirements, as well as impacts of the urban interface, affect the cost per acre. This amount varies based on economies of scale (e.g., a 500-acre park/Preserve costs less per acre to manage than a 100-acre park/Preserve). Specifically, the cost per acre was calculated as follows by dividing the cost of managing all of the following acreage (\$5.9 million) by the total acres. The acreage includes approximately:

- 6,600 acres acquired and managed within the SC MSCP Subarea, Tijuana River Valley, Otay Valley Regional Park since 1998, and
- 5,800 acres in future North County Plan Area since 2001 and 55 acres in City of Encinitas HCP,
- 6,700 acres East County Plan Areas since 2001, and
- The original 19,000 of open space owned and managed within the County upon Subarea Plan adoption, approximately 7,000 acres in the Subarea.

5.2 Otay Ranch Preserve Community Facility District 97-2

Community Facility District 97-2 funds, administered by the City of Chula Vista, are used for managing and monitoring the Otay Ranch Preserve. The approved budget for FY2015-2016 was \$505,000 and the approved budget for FY2016-2017 is \$660,000, including one-time funding for a trail alignment study and an update of the Otay Ranch RMP2. The City of Chula Vista capital improvement project to install vehicle barriers along Minnewawa Truck trail in order to discourage trespassing and illegal access onto the Preserve was completed in December 2016.

5.3 *TransNet* Funding

SANDAG is a regional transportation agency responsible for administering *TransNet* funds collected as a local half-cent sales tax for transportation improvements. The vote to extend the *TransNet* tax in 2004 included \$850 million to fund land acquisition, land management, and species monitoring of mitigation lands for local and regional transportation projects known as the *TransNet* EMP. From SANDAG's fact sheet, as of August 2016, the \$850 million *TransNet* Environmental Mitigation Program (EMP) has supported the acquisition of 39 properties throughout the region, totaling more than 8,600 acres¹⁰. As of May 2015, SANDAG had expended more than \$21 million to manage and monitor the regional habitat preserve system.

¹⁰ <http://www.keepsandiegomoving.com/EMP/EMP-acquisitions.aspx#>

6.0 EDUCATION AND OUTREACH

One of DPR's key activities is educating the public about the County's natural and cultural resources. Rangers and volunteers are trained to lead environmental education programs and provide multiple interpretive services to the public. Presentations are available to people of all ages at schools, parks, campgrounds, interpretive centers, camps, scout groups, and churches. Among these programs are:

- **Discovery Program:** This program, offered at no cost to participants, has assisted hundreds of educators and elementary school students to explore the wealth of nature at local parks and in their own backyards. The hands-on courses include a pre-field trip ranger visit to the school, activities for classroom use, a field trip and ranger led-hikes, and post-field trip activities for classroom and home use. The curriculum correlates with Next Generation Science Standards and includes the subjects of plants and photosynthesis, astronomy, birds, Native Americans, geology, insects, and general ecology.
- **TRACK Trails Program:** This program helps children explore the beauty of nature as part of the national *Kids in Parks* campaign. It features kiosks at trailheads with brochures detailing fun and adventurous aspects of hikes offered. Children then earn prizes by visiting the TRACK Trails website and tracking their adventures in their online nature journals.
- Animal ambassadors and display center interpretation
- Wildlife conservation programs with live animals
- Environmental presentations at parks and preserves
- Daily interpretation at park and preserve nature centers, museums and at kiosks
- MSCP and environmental presentations to community groups and service boards
- Ranger-led nature talks, slide shows, walks and hikes
- Community service projects which include on-going tree care and watering
- Stormwater and Watershed Education
- Family Campouts
- Leave No Trace Program

7.0 CONCLUSION

During the first 19 years of this 50-year program, the County and its agency and private conservation partners have assembled 77,552 acres of the 98,379-acre preserve. This represents 79% of the Preserve Assembly goal. The County is committed to continuing to work in good faith with its partners to assemble and deliver a functional preserve. The Board of Supervisors maintains its commitment to the parks and open space conservation program by continuing its annual appropriation for acquiring, managing and monitoring these natural lands. Ongoing preservation combined with management and species monitoring of preserve areas will enable the County to conserve San Diego's unique native habitats and wildlife for future generations to enjoy.

Appendix 1. Additions to Preserve/PAMA

Area, Acquisition Name	Total Acres	Previously Outside PAMA; now considered as Preserve	Non-PAMA, Non-Hardline Preserve (HP) Acres			
			Vegetation		Biological Core & Linkage Areas	
			Vegetation Type	Acres	BCLA Type	Acres
1999						
Lakeside, Arabo	8.82	2.68	Diegan Coastal Sage Scrub	1.884	Habitat Linkages	2.68
			Disturbed Habitat	0.797		
			<i>Total</i>	2.680		
Lakeside, Ham	47.79	3.03	Diegan Coastal Sage Scrub	0.418	Habitat Linkages	2.48
			Disturbed Habitat	2.612		
			<i>Total</i>	3.030		
Lakeside, HJMD	32.66	3.08	Diegan Coastal Sage Scrub	0.137	Habitat Linkages	3.08
			Disturbed Habitat	2.945		
			<i>Total</i>	3.081		
Lusardi Creek, Rancho Vista	98.04	17.16	Chaparral	1.760	Core Resources Area	17.16
			Diegan Coastal Sage Scrub	8.229		
			Mule Fat Scrub	0.154		
			Non-Native Grassland	6.009		
			Disturbed Habitat	1.004		
			<i>Total</i>	17.155		
2000						
Lusardi Creek, Santa Fe Views	96.75	23.24	Chamise Chaparral	10.320	Core Resources Area	23.24
			Chaparral	1.258		
			Coastal Sage-Chaparral Scrub	0.594		
			Diegan Coastal Sage Scrub	3.893		
			Disturbed Habitat	0.907		
			Non-Native Grassland	6.266		
			<i>Total</i>	23.239		
Hollenbeck Canyon, Daley Ranch, Ph I	289.86	289.86	Chaparral	47.351		
			Coastal Sage-Chaparral Scrub	0.023		
			Diegan Coastal Sage Scrub	204.318		
			Disturbed Habitat	4.908		
			Southern Coast Live Oak Riparian Forest	32.017		
			Valley and Foothill Grassland	1.233		
			<i>Total</i>	289.850		
Hollenbeck Canyon, Daley Ranch, Ph II	290.94	290.74	Chaparral	77.067		
			Diegan Coastal Sage Scrub	186.783		
			Extensive Agriculture - Field/Pasture, Row Crops	0.021		
			Southern Coast Live Oak Riparian Forest	16.569		
			Disturbed Habitat	0.037		
			Valley and Foothill Grassland	10.253		
			<i>Total</i>	290.729		
Lakeside, United Brokers	8.13	1.80	Diegan Coastal Sage Scrub	0.293	Habitat Linkages	1.46
			Disturbed Habitat	1.504		
			<i>Total</i>	1.797		
2002						
Wright's Field, Findel Ranch	29.39	29.39	Black Oak Woodland	9.841		
			Chaparral	0.171		
			Disturbed Habitat	1.157		
			Valley and Foothill Grassland	18.223		
			<i>Total</i>	29.392		
Iron Mountain, Ramona Serena/Barnett Ranch	668.24	392.37	Chaparral	0.001	Core Resources Area	0.01
			Coast Live Oak Woodland	9.922		
			Diegan Coastal Sage Scrub	56.642		
			Eucalyptus Woodland	0.816		
			Extensive Agriculture - Field/Pasture, Row Crops	0.054		
			Field/Pasture	149.985		
			Granitic Southern Mixed Chaparral	140.709		
			Non-Native Grassland	26.502		
			Oak Woodland	0.536		
			Riparian and Bottomland Habitat	2.890		
			Southern Mixed Chaparral	4.299		
			<i>Total</i>	392.356		
2003						
Iron Mountain, Boulder Oaks	1270.66	119.47	Chaparral	89.405	Core Resources Area	29.38
			Dense Coast Live Oak Woodland	0.657		
			Southern Mixed Chaparral	8.682		
			Valley and Foothill Grassland	20.724		
			<i>Total</i>	119.468		

Appendix 1. Additions to Preserve/PAMA (continued)

Area, Acquisition Name	Total Acres	Previously Outside PAMA; now considered as Preserve	Non-PAMA, Non-Hardline Preserve (HP) Acres			
			Vegetation		Biological Core & Linkage Areas	
			Vegetation Type	Acres	BLCA Type	Acres
2007						
Greenfield Transfer	17.39	9.01	Coastal and Valley Freshwater Marsh	0.001	Core Resources Area	9.01
			Diegan Coastal Sage Scrub	8.547		
			Disturbed Habitat	0.464		
			<i>Total</i>	9.013		
2008						
Ramona Grasslands	463.32	293.43	Chaparral	181.583	Core Resources Area	291.41
			Dense Coast Live Oak Woodland	1.298		
			Diegan Coastal Sage Scrub	10.016		
			Southern Coast Live Oak Riparian Forest	11.134		
			Southern Mixed Chaparral	88.490		
			Valley and Foothill Grassland	0.900		
			<i>Total</i>	293.421		
2009						
Christopherhill TET Dedication	68.59	5.25	Diegan Coastal Sage Scrub	1.363	Core Resources Area	3.84
- Added to Baseline; Not PAMA			Disturbed Habitat	3.876	Other	1.41
			Valley and Foothill Grassland	0.010		
			<i>Total</i>	5.249	<i>Total</i>	5.25
2010						
Del Dios Highlands (Helix-Lambron)	153.07	62.51	Dense Coast Live Oak Woodland	0.629	Core Resources Area	15.77
			Southern Mixed Chaparral	53.248		
			Disturbed Habitat	8.627		
			<i>Total</i>	62.504		
Lakeside (Endangered Habitats Conservancy)	141.46	22.97	Diegan Coastal Sage Scrub	0.002	Core Resources Area	20.89
			Disturbed Habitat	17.866	Other	2.09
			Extensive Agriculture - Field/Pasture, Row Crops	0.070		
			Freshwater	0.002		
			Open Water	5.030		
			Valley and Foothill Grassland	0.002		
			<i>Total</i>	22.972	<i>Total</i>	22.97
2011						
Stoneridge Preserve - Worley	226.54	6.52	Chaparral	1.574	Habitat Linkages	0.14
			Diegan Coastal Sage Scrub	3.342		
			Southern Coast Live Oak Riparian Forest	1.469		
			Disturbed Habitat	0.134		
			<i>Total</i>	6.519		
Sycamore Canyon/Goodan Ranch	111.94	0.51	Southern Mixed Chaparral	0.001	Core Resources Area	0.51
			Disturbed Habitat	0.509		
			<i>Total</i>	0.510		
2012						
San Diego River Foundation El Capitan	157.89	157.89	Black Oak Woodland	15.754	Core Resources Area	38.54
Capitan			Chaparral	0.051		
			Southern Mixed Chaparral	142.078		
			<i>Total</i>	157.883		
Boulder Oaks - Salvation Army	748.40	736.08	Diegan Coastal Sage Scrub	2.264	Core Resources Area	224.26
			Southern Mixed Chaparral	576.760		
			Scrub Oak Chaparral	17.759		
			Non-Native Grassland	71.787		
			Coastal and Valley Freshwater Marsh	1.443		
			Southern Coast Live Oak Riparian Forest	12.400		
			Southern Arroyo Willow Riparian Forest	1.741		
			Open Water	0.982		
			Coast Live Oak Woodland	13.081		
			Engelmann Oak Woodland	21.684		
			Disturbed Habitat	11.483		
			Urban/Developed	4.696		
			<i>Total Acres</i>	736.079		
2013						
Lusardi Creek, Fingal	31.16	8.74	Chamise Chaparral	4.486	Core Resources Area	8.74
			Diegan Coastal Sage Scrub	3.744		
			Disturbed Habitat	0.507		
			<i>Total</i>	8.737		
2015						
Flinn Springs MSCP	33.14	2.12	Chaparral	1.813	NA	NA
			Coastal Sage-Chaparral Scrub	0.040		
			Disturbed Habitat	0.265		
			<i>Total</i>	2.118		
Total, except for small fractions		2477.86				

Appendix 2 County Tracked Acquisitions Since 1998

Area and Property Name	Owned by Local/Non Profits	Preserve/Hardline Owned by County	Preserve 2016* Approved Additions	MHPA & Chula Vista	Total Acres	Land Cost	Non County Funds	County Funds	Funding Source
1998									
Tijuana River Valley, Arietta				39	39	\$ 478,000	\$ 478,000		State
Tijuana River Valley, Calmat Option I				164	164	\$ 1,225,272	\$ 1,225,272		State, City of San Diego
Tijuana River Valley, West/Dymott				40	40	\$ 410,000	\$ 410,000		State
1999									
Tijuana River Valley, Calmat Option Final				28	28	\$ 208,837	\$ 208,837		State
Lakeside, Arabo		6	3		9	\$ 160,000	\$ 80,000	\$ 80,000	County, State, Federal
Lakeside, Ham		45	3		48	\$ 800,000	\$ 400,000	\$ 400,000	County, State, Federal
Lakeside, HJMD		30	3		33	\$ 490,000	\$ 245,000	\$ 245,000	County, State, Federal
Lakeside, Yunis		13			13	\$ 270,000	\$ 135,000	\$ 135,000	County, State, Federal
Lusardi Creek, Rancho Vista		81	17		98	\$ 1,845,500	\$ 922,750	\$ 922,750	County, State, Federal

Appendix 2 County Tracked Acquisitions Since 1998 (continued)

2000									
Lusardi Creek, Santa Fe Views		74	23		97	\$ 1,976,000	\$ 988,000	\$ 988,000	County, State
Hollenbeck Canyon, L&B Daley Pres, Ph I			290		290	\$ 1,000,000		\$ 1,000,000	County
Hollenbeck Canyon, L&B Daley Pres, Ph II		0	291		291	\$ 1,000,000		\$ 1,000,000	County
Lakeside, United Brokers		6	2		8	\$ 153,000	\$ 76,500	\$ 76,500	County, State
Tijuana River Valley, Piper/Shelton				142	142	\$ 1,752,750	\$ 1,252,750	\$ 500,000	County, State
Wright's Field, Alpine School District	41		0.178		41	\$ 425,000	\$ 250,000	\$ 175,000	County, State, Federal
Wright's Field, Union Bank	40		0.002		40	\$ 356,633	\$ 208,437	\$ 148,196	County, State
2001									
Lakeside, Pavel		11	0.077		11	\$ 200,000	\$ 100,000	\$ 100,000	County, State
Otay River Valley Park, Malcolm				1	1	\$ 46,000	\$ 46,000		County, Developer
Otay River Valley Park, O'Brien				8	8	\$ 205,500	\$ 102,724	\$ 102,776	Developer negotiated by County
2002									
Lakeside, Shuler		59			59	\$ 425,000	\$ 425,000		State, Federal
Tijuana River Valley, Hanson				74	74	\$ 1,387,500		\$ 1,387,500	County
Tijuana River Valley, Skibbe				10	10	\$ 485,000	\$ 485,000		State, City (Federal)
Wright's Field, Findel Ranch	29		29		29	\$ 500,000		\$ 500,000	County
Iron Mountain, Ramona Serena/ Barnett Ranch		273	392		665	\$ 4,440,000	\$ 2,000,000	\$ 2,440,000	County, State, Federal

Appendix 2 County Tracked Acquisitions Since 1998 (continued)

2003									
Otay River Valley Park, Hirlinger- Baker		0		8	8	\$ 95,000		\$ 95,000	State, Federal
Iron Mountain, Berkeley Hering		59			59	\$ 457,200	\$ 395,000	\$ 62,200	County, State, Federal
Iron Mountain, Boulder Oaks		1151	119		1271	\$ 4,410,000	\$ 3,307,500	\$ 1,102,500	County, State, Federal
Iron Mountain, Reams Thomsen		46			46	\$ 180,000	\$ 180,000		County, State, Federal
Sycamore Canyon Preserve (I-122)		28			28				County, I-122
East Otay Mesa, Furby North				79	79	\$ 1,296,600		\$ 1,296,600	County
Otay River Valley Park, Munson Otay				19	19	\$ 13,300	\$ 13,300		State
Tijuana River Valley, Horwin				21	21	\$ 365,000	\$ 365,000		State
Tijuana River Valley, Nelson Sloan				73	73	\$ 699,782	\$ 699,782		State
Wright's Field, Apollo 120 acres	120				120	\$ 1,800,000	\$ 1,000,000	\$ 800,000	County, State
2004									
Escondido Creek, Polo (110 acs, but 4 acs in NC)		106			106	\$ 1,700,000	\$ 326,000	\$ 1,374,000	County, I-122 (8 acs), State
Sycamore Canyon Preserve (I-122)		63	0.200		63				County, I-122
Otay River Valley Park, Georgiana Smith		89	0.215		89	\$ 2,611,000	\$ 2,611,000		State
Otay River Valley Park, Greg Smith		98	0.005		98	\$ 3,243,000	\$ 3,243,000		State

Appendix 2 County Tracked Acquisitions Since 1998 (continued)

2005									
Stoneridge (fka Harbison), Bahde Donation		20	0.142		20				County acquired donation (interdept) post MSCP creation
Otay River Valley Park, Grindle		8	0.017		8	\$ 138,000	\$ 91,200	\$ 46,800	County, State
Otay River Valley Park, Kimball		13			13	\$ 196,000	\$ 196,000		State
Otay River Valley Park, Lanzetta				6	6	\$ 125,000	\$ 125,000		State
Tijuana River Valley, Dairy Mart Ponds				60	60				County had managed for State, State formalized by transfer
2006									
Otay River Valley Park, Sandoval (1 & 2)				13	13	\$ 700,000	\$ 700,000		State
Otay River Valley Park, Otay Land Company				114	114	\$ 1,490,000	\$ 1,490,000		State
Pitchford (MLJ at Stelzer)		3	0.079		3	\$ 75,000		\$ 75,000	County
Sheriff's East Mesa Buffer		9			9	\$ 45,000		\$ 45,000	County
2007									
Greenfield Transfer Mitig 17 acs	17		9		17	\$1		\$1	Olivenhain Wtr Mitigation Mgt
2008									
Del Dios Highlands (Greer)		10			10	\$ 675,000		\$ 675,000	County
Sycamore Canyon/Goodan Ranch (Armstrong)		20	0.002		20	\$ 160,000		\$ 160,000	County
Ramona Grasslands (Gilded Portion in SC MSCP)		170	293		463	\$ 3,630,000	\$ 3,217,500	\$ 412,500	County, State, Federal

Appendix 2 County Tracked Acquisitions Since 1998 (continued)

2009									
Christopherhill TET dedication – Total 69 acs, 64 which were baseline; 5 acs approved as Preserve and added to baseline			5						County accepted in bankruptcy settlement
2010									
Del Dios Highlands (Helix-Lambron)		91	63		153	\$ 4,000,000	\$ 2,600,000	\$ 1,400,000	County, Federal
Sycamore Canyon southern additions		150	0.116		150	\$ 1,310,000		\$ 1,310,000	County
Lakeside Hansen Pond (Endangered Habitats Conservancy)	141		23		141	\$ 4,000,000	\$ 3,000,000	\$ 1,000,000	County, State, EHC
2011									
Stoneridge Preserve - Worley		220	7		227	\$ 2,650,000		\$ 2,650,000	County
Sycamore Canyon/Goodan Ranch		111	1		112	\$ 2,820,000	\$ 200,000	\$ 2,620,000	County, State
Mit Land Policy Deduction- Stelzer, Lakeside Linkage		-1			-1				
2012									
San Diego River Foundation El Capitan	158		158		158	\$ 205,000	\$ 5,000	\$ 200,000	County, Non Profit
Boulder Oaks -Salvation Army		12	736		748	\$ 6,555,000		\$ 6,555,000	County
Mit Lnd Policy Deduction - L B Daley		-2.450			-2				
2013									
Oakoasis-Sophisticated Investments		37	0.002		37	\$ 72,000		\$72,000	County
Sycamore Canyon/Goodan Ranch (South-Barratt American)		18	0.038		18	\$ 180,000		\$ 180,000	County

Appendix 2 County Tracked Acquisitions Since 1998 (continued)

2013 (continued)									
Otay River Valley Park, Reed/Paintball	8			8	8	\$ 262,500		\$ 262,500	General Fund
Lusardi Creek, Fingal		22	9		31	\$ 1,360,000	\$ 200,000	\$ 1,160,000	County, State
Mit Lnd Policy Deduction - Tijuana River Valley				-3	-3				
2014									
Stoneridge Preserve (tax default)		1			1	\$ 9,563		\$ 9,563	County
Mit Lnd Policy Deduction - L B Daley		-0.37			-0.37				
2015									
Flinn Springs MSCP		31	2		33	\$ 400,000		\$ 400,000	County
Sycamore Canyon/Goodan		100			100	\$ 810,000	\$ 200,000	\$ 610,000	County, State
Sycamore Canyon/Goodan		40			40	\$ 541,000		\$ 541,000	County
Mit Lnd Policy Deduction - L B Daley		-8			-8				
2016									
San Vicente Connection (Navarro)		23			23	\$ 224,000		\$ 224,000	County
Mit Lnd Policy Deduction - Tijuana River Valley				-10	-10				
	556	3,336	2,479	893	7,031	\$ 69,743,938	\$ 34,204,552	\$ 35,539,386	
	Owned By Local/ Non Profits	Preserve / Hardline Owned by County	Preserve 2016* Approved Additions	MHPA & Chula Vista	Total Acres	Land Cost	Non County Funds	County Funds	

*5 acres is baseline

Appendix 3-A U.S. FWS Acquisitions in County Subarea Since 1998

Refuge Unit	TrackNo	Property Name	Total Acres	Total Acres in MSCP MHPA	State of California Funded				Federal Government Funded				Total Donated Value (000s)	Total Cost of Property (000s)	Year	Land Manager	Fee Owner	Funding Source
					Agency's Prorated Acres Purchased	Agency's Prorated Acres in MSCP MHPA	Agency % Contribution	Agency's Cost (000s)	Agency's Prorated Acres Purchased	Agency's Prorated Acres in MSCP MHPA	Agency % Contribution	Agency's Cost (000s)						
San Diego NWR Otay-Sweetwater	1	Department of Treasury (Gomez)	88	26	0	0	0%	\$0	0	0	0%	\$0	\$0	\$0	1999	USFWS	USFWS	None
San Diego NWR Otay-Sweetwater	10	FDIC (Rancho San Diego)	1167	1144	0	0	0%	\$0	0	0	0%	\$0	\$0	\$0	1996	USFWS	USFWS	None
San Diego NWR Otay-Sweetwater	12	Sampo	69	18	0	0	0%	\$0	69	18	100%	\$280	\$0	\$280	2002	USFWS	USFWS	LWCF
San Diego NWR Otay-Sweetwater	13	Asistoisdmr Holdings	37	0	0	0	0%	\$0	37	0	100%	\$260	\$0	\$260	2004	USFWS	USFWS	LWCF
San Diego NWR Otay-Sweetwater	14	Mills	19	19	0	0	0%	\$0	19	19	100%	\$115	\$0	\$115	2002	USFWS	USFWS	LWCF
San Diego NWR Otay-Sweetwater	15	Clarke	38	38	0	0	0%	\$0	38	38	100%	\$170	\$0	\$170	2001	USFWS	USFWS	LWCF
San Diego NWR Otay-Sweetwater	16	Baker Trust	19	0	0	0	0%	\$0	19	0	100%	\$100	\$0	\$100	2004	USFWS	USFWS	LWCF
San Diego NWR Otay-Sweetwater	23	Beitmann	5	5	0	0	0%	\$0	5	5	100%	\$28	\$0	\$28	1999	USFWS	USFWS	LWCF
San Diego NWR Otay-Sweetwater	71	The Nature Conservancy	1858	1309	0	0	0%	\$0	0	0	0%	\$0	\$0	\$0	2012	USFWS	USFWS	None
San Diego NWR Otay-Sweetwater	84	DeGuzman	34	0	0	0	0%	\$0	34	0	100%	\$153	\$0	\$153	1999	USFWS	USFWS	LWCF
San Diego NWR Otay-Sweetwater	85	DeGuzman	41	0	0	0	0%	\$0	41	0	100%	\$180	\$0	\$180	1999	USFWS	USFWS	LWCF
San Diego NWR Otay-Sweetwater	86	DeGuzman	37	0	0	0	0%	\$0	37	0	100%	\$180	\$0	\$180	1999	USFWS	USFWS	LWCF
San Diego NWR Otay-Sweetwater	89	Desert Pacific Council/Boy Scouts	90	0	0	0	0%	\$0	90	0	100%	\$393	\$0	\$393	1999	USFWS	USFWS	LWCF
San Diego NWR Otay-Sweetwater	92	Doenges, Robert S. & William S.	87	85	0	0	0%	\$0	87	85	100%	\$446	\$0	\$446	1998	USFWS	USFWS	LWCF

Appendix 3-A U.S. FWS Acquisitions in County Subarea Since 1998 (continued)

Refuge Unit	TrackNo	Property Name	Total Acres	Total Acres in MSCP MHPA	Agency's Prorated Acres Purchased	Agency's Prorated Acres in MSCP MHPA	Agency % Contribution	Agency's Cost (000s)	Agency's Prorated Acres Purchased	Agency's Prorated Acres in MSCP MHPA	Agency % Contribution	Agency's Cost (000s)	Total Donated Value (000s)	Total Cost of Property (000s)	Year	Land Manager	Fee Owner	Funding Source
San Diego NWR Otay-Sweetwater	98	Beaver Hollow	120	120	0	0	0%	\$0	120	120	100%	\$975	\$0	\$975	2016	USFWS	USFWS	LWCF
San Diego NWR Otay-Sweetwater	101	Emerald Properties Corp (N. San Miguel)	500	499	217	216	43%	\$1,300	283	283	57%	\$1,700	\$850	\$3,000	1997	USFWS	USFWS	Prop 117 and LWCF
San Diego NWR Otay-Sweetwater	104	Evans	2	1	0	0	0%	\$0	2	1	100%	\$87	\$0	\$87	2011	USFWS	USFWS	LWCF
San Diego NWR Otay-Sweetwater	127	Cuevas	10	0	0	0	0%	\$0	10	0	100%	\$235	\$0	\$235	2012	USFWS	USFWS	LWCF
San Diego NWR Otay-Sweetwater	132	Grant, Kenneth Carlton	15	10	0	0	0%	\$0	15	10	100%	\$140	\$0	\$140	2000	USFWS	USFWS	LWCF
San Diego NWR Otay-Sweetwater	137	Hamel (I)	45	2	0	0	0%	\$0	45	2	100%	\$211	\$0	\$211	1998	USFWS	USFWS	LWCF
San Diego NWR Otay-Sweetwater	149	Heuschele	6	0	0	0	0%	\$0	6	0	100%	\$35	\$0	\$35	2013	USFWS	USFWS	LWCF
San Diego NWR Otay-Sweetwater	164	Immenschuh	641	640	0	0	0%	\$0	641	640	100%	\$1,760	\$0	\$1,760	2000	USFWS	USFWS	LWCF
San Diego NWR Otay-Sweetwater	175	Kelly, etal	5	0	0	0	0%	\$0	5	0	100%	\$205	\$0	\$205	2006	USFWS	USFWS	LWCF
San Diego NWR Otay-Sweetwater	176	Kennerly	10	0	0	0	0%	\$0	10	0	100%	\$80	\$0	\$80	2011	USFWS	USFWS	LWCF
San Diego NWR Otay-Sweetwater	180	King	5	0	0	0	0%	\$0	5	0	100%	\$175	\$0	\$175	2005	USFWS	USFWS	LWCF
San Diego NWR Otay-Sweetwater	194	Lee	6	0	0	0	0%	\$0	0	0	0%	\$0	\$0	\$0	2013	USFWS	USFWS	None
San Diego NWR Otay-Sweetwater	199	Liker	8	8	0	0	0%	\$0	8	8	100%	\$150	\$0	\$150	1998	USFWS	USFWS	LWCF
San Diego NWR Otay-Sweetwater	200	TPL (Las Montanas I)	276	112	0	0	0%	\$0	276	112	100%	\$1,800	\$0	\$1,800	1998	USFWS	USFWS	LWCF

Appendix 3-A U.S. FWS Acquisitions in County Subarea Since 1998 (continued)

Refuge Unit	TrackNo	Property Name	Total Acres	Total Acres in MSCP MHPA	Agency's Prorated Acres Purchased	Agency's Prorated Acres in MSCP MHPA	Agency % Contribution	Agency's Cost (000s)	Agency's Prorated Acres Purchased	Agency's Prorated Acres in MSCP MHPA	Agency % Contribution	Agency's Cost (000s)	Total Donated Value (000s)	Total Cost of Property (000s)	Year	Land Manager	Fee Owner	Funding Source
San Diego NWR Otay-Sweetwater	222	Singing Hills (Duncan)	79	76	0	0	0%	\$0	0	0	0%	\$0	\$0	\$0	1998	USFWS	USFWS	None
San Diego NWR Otay-Sweetwater	230	Mitchell	3	0	0	0	0%	\$0	3	0	100%	\$250	\$0	\$250	2005	USFWS	USFWS	LWCF
San Diego NWR Otay-Sweetwater	238	Spring Valley Ranch	43	43	0	0	0%	\$0	43	43	100%	\$435	\$0	\$435	2015	USFWS	USFWS	LWCF
San Diego NWR Otay-Sweetwater	240	National Fish and Wildlife Foundation (Smith "V parcel")	278	278	0	0	0%	\$0	0	0	0%	\$0	\$0	\$0	1997	USFWS	USFWS	None
San Diego NWR Otay-Sweetwater	251	Nauman	2	0	0	0	0%	\$0	2	0	100%	\$78	\$0	\$78	2011	USFWS	USFWS	LWCF
San Diego NWR Otay-Sweetwater	266	Peppard	10	0	0	0	0%	\$0	0	0	0%	\$0	\$0	\$250	2012	USFWS	USFWS	Other
San Diego NWR Otay-Sweetwater	272	TET (Pointe?)	261	260	0	0	0%	\$0	0	0	0%	\$0	\$0	\$0	2010	USFWS	USFWS	None
San Diego NWR Otay-Sweetwater	288	Rice	253	0	0	0	0%	\$0	253	0	100%	\$1,140	\$0	\$1,140	2000	USFWS	USFWS	LWCF
San Diego NWR Otay-Sweetwater	290	Riedman	41	41	0	0	0%	\$0	41	41	100%	\$285	\$0	\$285	2016	USFWS	USFWS	LWCF
San Diego NWR Otay-Sweetwater	295	Roberts	10	0	0	0	0%	\$0	10	0	100%	\$225	\$0	\$225	2005	USFWS	USFWS	LWCF
San Diego NWR Otay-Sweetwater	296	Robinson	10	0	0	0	0%	\$0	10	0	100%	\$55	\$0	\$55	2005	USFWS	USFWS	LWCF
San Diego NWR Otay-Sweetwater	297	Catholic Diocese	27	0	0	0	0%	\$0	27	0	100%	\$150	\$0	\$150	2009	USFWS	USFWS	LWCF
San Diego NWR Otay-Sweetwater	302	Salerno	10	0	0	0	0%	\$0	10	0	100%	\$80	\$0	\$80	2011	USFWS	USFWS	LWCF

Appendix 3-A U.S. FWS Acquisitions in County Subarea Since 1998 (continued)

Refuge Unit	TrackNo	Property Name	Total Acres	Total Acres in MSCP MHPA	Agency's Prorated Acres Purchased	Agency's Prorated Acres in MSCP MHPA	Agency % Contribution	Agency's Cost (000s)	Agency's Prorated Acres Purchased	Agency's Prorated Acres in MSCP MHPA	Agency % Contribution	Agency's Cost (000s)	Total Donated Value (000s)	Total Cost of Property (000s)	Year	Land Manager	Fee Owner	Funding Source
San Diego NWR Otay-Sweetwater	312	TNC Schooler	3	3	0	0	0%	\$0	3	3	100%	\$45	\$0	\$45	2016	USFWS	USFWS	LWCF
San Diego NWR Otay-Sweetwater	315	Chula Vista 186 LLC	185	0	0	0	0%	\$0	185	0	100%	\$1,302	\$0	\$1,302	2004	USFWS	USFWS	LWCF
San Diego NWR Otay-Sweetwater	319	Sevel	1	0	0	0	0%	\$0	1	0	100%	\$33	\$0	\$33	2011	USFWS	USFWS	LWCF
San Diego NWR Otay-Sweetwater	326	Bols	41	9	0	0	0%	\$0	0	0	0%	\$0	\$0	\$220	2014	USFWS	USFWS	Other
San Diego NWR Otay-Sweetwater	357	Jones	20	0	0	0	0%	\$0	20	0	100%	\$230	\$0	\$230	2010	USFWS	USFWS	LWCF
San Diego NWR Otay-Sweetwater	363	Brown	41	41	0	0	0%	\$0	41	41	100%	\$50	\$0	\$50	2007	USFWS	USFWS	LWCF
San Diego NWR Otay-Sweetwater	367	Trachtenberg	4	4	0	0	0%	\$0	4	4	100%	\$70	\$0	\$70	2016	USFWS	USFWS	LWCF
San Diego NWR Otay-Sweetwater	396	Wilhite	41	41	0	0	0%	\$0	41	41	100%	\$480	\$0	\$480	2007	USFWS	USFWS	LWCF
San Diego NWR Otay-Sweetwater	411	Lauss	2	0	0	0	0%	\$0	2	0	100%	\$52	\$0	\$52	2011	USFWS	USFWS	LWCF
San Diego NWR Otay-Sweetwater	503	Neuner/Weller	82	82	0	0	0%	\$0	0	0	0%	\$0	\$0	\$0	2016	USFWS	USFWS	None
San Diego NWR Otay-Sweetwater	101a	Emerald Properties Corp (N. San Miguel)	1188	1176	0	0	0%	\$0	0	0	0%	\$0	\$0	\$0	1998	USFWS	USFWS	None
San Diego NWR Otay-Sweetwater	102b	Trimark	167	167	0	0	0%	\$0	0	0	0%	\$0	\$0	\$0	2013	USFWS	USFWS	None
San Diego NWR Otay-Sweetwater	103a	TET	338	338	0	0	0%	\$0	0	0	0%	\$0	\$0	\$0	2009	USFWS	USFWS	None
San Diego NWR Otay-Sweetwater	103h	TET	53	0	0	0	0%	\$0	53	0	100%	\$225	\$0	\$225	2006	USFWS	USFWS	LWCF

Appendix 3-A U.S. FWS Acquisitions in County Subarea Since 1998 (continued)

Refuge Unit	TrackNo	Property Name	Total Acres	Total Acres in MSCP MHPA	Agency's Prorated Acres Purchased	Agency's Prorated Acres in MSCP MHPA	Agency % Contribution	Agency's Cost (000s)	Agency's Prorated Acres Purchased	Agency's Prorated Acres in MSCP MHPA	Agency % Contribution	Agency's Cost (000s)	Total Donated Value (000s)	Total Cost of Property (000s)	Year	Land Manager	Fee Owner	Funding Source
San Diego NWR Otay-Sweetwater	10a	FDIC (Rancho San Diego)	475	468	0	0	0%	\$0	0	0	0%	\$0	\$0	\$0	1996	USFWS	USFWS	None
San Diego NWR Otay-Sweetwater	10b	FDIC (Rancho San Diego)	28	28	0	0	0%	\$0	0	0	0%	\$0	\$0	\$0	1996	USFWS	USFWS	None
San Diego NWR Otay-Sweetwater	10c	FDIC (Rancho San Diego)	129	129	0	0	0%	\$0	0	0	0%	\$0	\$0	\$0	1996	USFWS	USFWS	None
San Diego NWR Otay-Sweetwater	10d	FDIC (Rancho San Diego)	26	0	0	0	0%	\$0	0	0	0%	\$0	\$0	\$0	1996	USFWS	USFWS	None
San Diego NWR Otay-Sweetwater	137a	Hamel (II)	79	0	0	0	0%	\$0	79	0	100%	\$319	\$0	\$319	1999	USFWS	USFWS	LWCF
San Diego NWR Otay-Sweetwater	16a	Baker Trust	1	1	0	0	0%	\$0	1	1	100%	\$5	\$0	\$5	2004	USFWS	USFWS	LWCF
San Diego NWR Otay-Sweetwater	200a	TPL (Las Montanas II)	661	279	0	0	0%	\$0	661	279	100%	\$1,500	\$0	\$1,500	1998	USFWS	USFWS	LWCF
San Diego NWR Otay-Sweetwater	200b	TPL (McGinty Ranch I)	582	582	0	0	0%	\$0	582	582	100%	\$1,675	\$0	\$1,675	1999	USFWS	USFWS	LWCF
San Diego NWR Otay-Sweetwater	200c	TPL (McGinty Ranch II)	112	112	0	0	0%	\$0	0	0	0%	\$0	\$0	\$0	1999	USFWS	USFWS	None
San Diego NWR Otay-Sweetwater	200f	TPL (Shinohara I)	85	78	0	0	0%	\$0	85	78	100%	\$2,700	\$0	\$2,700	2001	USFWS	USFWS	LWCF
San Diego NWR Otay-Sweetwater	200g	TPL (Shinohara II)	40	34	0	0	0%	\$0	40	34	100%	\$1,381	\$0	\$1,381	2002	USFWS	USFWS	LWCF
San Diego NWR Otay-Sweetwater	200h	TPL (Shinohara III)	369	368	0	0	0%	\$0	369	368	100%	\$4,540	\$0	\$4,540	2004	USFWS	USFWS	LWCF
San Diego NWR Otay-Sweetwater	237a	Mozaffarian	10	10	0	0	0%	\$0	10	10	100%	\$40	\$0	\$40	1998	USFWS	USFWS	LWCF
San Diego NWR Otay-Sweetwater	237b	Mozaffarian	5	5	0	0	0%	\$0	0	0	0%	\$0	\$0	\$0	1998	USFWS	USFWS	LWCF

Appendix 3-A U.S. FWS Acquisitions in County Subarea Since 1998 (continued)

Refuge Unit	TrackNo	Property Name	Total Acres	Total Acres in MSCP MHPA	Agency's Prorated Acres Purchased	Agency's Prorated Acres in MSCP MHPA	Agency % Contribution	Agency's Cost (000s)	Agency's Prorated Acres Purchased	Agency's Prorated Acres in MSCP MHPA	Agency % Contribution	Agency's Cost (000s)	Total Donated Value (000s)	Total Cost of Property (000s)	Year	Land Manager	Fee Owner	Funding Source
San Diego NWR Otay-Sweetwater	288a	Rice	1	0	0	0	0%	\$0	1	0	100%	\$3	\$0	\$3	2000	USFWS	USFWS	LWCF
San Diego NWR Otay-Sweetwater	288b	Rice	286	6	0	0	0%	\$0	286	6	100%	\$1,332	\$0	\$1,332	2001	USFWS	USFWS	LWCF
San Diego NWR Otay-Sweetwater	388a	Bella Lago	10	10	0	0	0%	\$0	0	0	100%	\$0	\$0	\$0	2014	USFWS	USFWS	None
San Diego NWR Otay-Sweetwater	3a	County of San Diego	22	22	0	0	0%	\$0	0	0	0%	\$0	\$0	\$0	2005	USFWS	USFWS	None
Totals			11,352	8,728	217	216		1,300	4,765	2,873		\$28,536	\$850	\$30,306				

Appendix 3-B. U.S. BLM Acquisitions in County

CaseNum	Property Name	Total Acres	Agency's Prorated Acres Purchased	Acres in MHPA only	Prorated acres in MHPA only	Acres in MHPA Amendment Area	Prorated acres in MHPA Amendment Area	Acres in MSCP MHPA (both)	Prorated Acres in MSCP MHPA (both)	Agency % Contribution	Agency's Cost (000s)	Total Cost of Property (000s)	Fund Authority	Year Acquired	Land Manager	Fee Owner
CACA037104	Helix/Lambron	381	381	381	381	0	0	381	381	100%	\$1,090.0	\$1,090.0	LWCF	1997	BLM	BLM
CACA039258	TPL (Sycamore Canyon)	354	354	167	167	23	23	190	190	100%	\$750.0	\$750.0	LWCF	1998	BLM	BLM
CACA040203	Anderson	126	126	1	1	0	0	1	1	100%	\$250.0	\$250.0	LWCF	2000	BLM	BLM
CACA040237	TPL (Rancho Jamul)	1,093	1093	253	253	7	7	260	260	100%	\$2,000.0	\$2,000.0	LWCF	1999	BLM	BLM
CACA040314	TET (Marron Valley)	332	332	332	332	0	0	332	332	100%	\$1,021.0	\$1,021.0	LWCF	1999	BLM	BLM
CACA041430	Anderson/Hendron	31	31	0	0	0	0	0	0	100%	\$60.0	\$60.0	LWCF	2000	BLM	BLM
CACA041516	TET	33	33	33	33	0	0	33	33	100%	\$80.0	\$80.0	LWCF	2000	BLM	BLM
CACA042687	TPL (Clark Ranch)	947	947	4	4	0	0	4	4	100%	\$3,867.0	\$3,867.0	LWCF	2001	BLM	BLM
CACA043168	Fetters	162	162	0	0	162	162	162	162	100%	\$325.1	\$325.1	LWCF	2002	BLM	BLM
CACA044234	Cain	461	461	23	23	437	437	461	461	100%	\$1,320.0	\$1,320.0	LWCF	2002	BLM	BLM
CACA045193	Brailsford/Keller	42	42	1	1	0	0	1	1	100%	\$140.0	\$140.0	LWCF	2004	BLM	BLM
CACA045308	Klein	118	118	1	1	0	0	1	1	100%	\$470.0	\$470.0	LWCF	2004	BLM	BLM
CACA046156	TPL	359	359	4	4	0	0	4	4	100%	\$1,436.0	\$1,436.0	LWCF	2004	BLM	BLM
CACA050366	TET (O'Neal Cnyn) Donation	167	0	0	0	167	0	167	0	0.00%	\$0.0	\$0.0	None	2009	BLM	BLM
		4,606	4,439	1,200	1,200	796	629	1,997	1,830		\$12,809.1	\$12,809.1				

Appendix 3-C CA Dept of Fish and Wildlife Acquisitions in County SubArea Since 1998

Property Name	Parcel History #	Parcel Name	Total Acres	Total Acres in MSCP	State of California Funded				Federal Government Funded				Total Donated Value (000s)	Total Cost of Property	Year	Land Manager	Fee Owner	Funding Source
					Agency's Prorated Acres Purchased	Agency's Prorated Acres in MSCP	Agency % Contribution	Agency's Cost (000s)	Agency's Prorated Acres Purchased	Agency's Prorated Acres in MSCP	Agency % Contribution	Agency's Cost (000s)						
Boden Canyon Ecological Reserve	821737	Boden Canyon (Phase I)	572	506	524	463	92%	\$2,172	0	0	0%	\$0	\$442	\$2,372	1998	CDFW	CDFW	Prop 117
	821826	Boden Canyon (Expansion #1)	604	548	558	506	92%	\$2,180	0	0	0%	\$0	\$430	\$2,360	1999	CDFW	CDFW	Prop 117
	821858	Boden Canyon (Expansion #2)	67	64	67	64	100%	\$210	0	0	0%	\$0	\$105	\$210	1999	CDFW	CDFW	Prop 117
Canada de San Vicente	822300	Monte Vista Ranch (Iron Mountain, Expansion #3)	392	390	0	0	0%	\$0	0	0	0%	\$0	\$0	\$0	2008	CDFW	CDFW	Mitigation
	822399	Monte Vista Ranch	4,026	1,558	2,453	949	61%	\$9,700	1,573	609	39%	\$6,221	\$0	\$15,921	2009	CDFW	CDFW	Prop 12 and Section 6
	822506	Monte Vista Ranch (Iron Mountain, Expansion #4)	314	11	0	0	0%	\$0	314	11	100%	\$2,100	\$300	\$2,100	2010	CDFW	CDFW	Section 6
	822883	Bonfils	266	9	93	3	35%	\$158	173	6	65%	\$293	\$0	\$450	2014	CDFW	CDFW	Prop 117 and Section 6
Crestridge Ecological Reserve	821774	Crestridge	2,372	1,958	857	707	36%	\$3,506	0	0	0%	\$0	\$1,889	\$3,506	1999	CDFW	CDFW	Prop 117
	821964	Crestridge Expansion #1	256	256	0	0	0%	\$0	0	0	0%	\$0	\$0	\$2,258	2002	CDFW	CDFW	Mitigation
	822003	Rancho Montana Unit Pilgrim Mitigation Bank (CALTRANS)	125	125	0	0	0%	\$0	0	0	0%	\$0	\$0	\$0	2002	CDFW	CDFW	N/A
Hollenbeck Canyon Wildlife Area	821913	Hollenbeck Canyon (Expansion #1 - Original CDFG Segment)	3241	945	3,170	925	98%	\$10,997	0	0	0%	\$0	\$0	\$11,240	2001	CDFW	CDFW	General Fund & Prop12
	822132	Hollenbeck Canyon (Expansion #2 - Honey Springs Ranch)	2012	82	2,012	82	100%	\$7,420	0	0	0%	\$0	\$0	\$7,420	2004	CDFW	CDFW	Prop 12
	822257	Hollenbeck Canyon (Expansion #3)	304	0	50	0	17%	\$205	254	0	83%	\$1,031	\$0	\$1,235	2006	CDFW	CDFW	Prop 12 and Section 6
	822632	Hollenbeck Canyon Wildlife Area, Expansion #4	577	34	178	10	31%	\$693	393	23	68%	\$1,532	\$87	\$2,250	2011	CDFW	CDFW	Prop 40 and Section 6
	822907	Hollenbeck Canyon Wildlife Area, Expansion #5	381	79	88	18	23%	\$361	0	0	0%	\$0	\$0	\$1,564	2015	CDFW	CDFW	Prop 117
	822908	Hollenbeck Canyon Wildlife Area, Expansion #6	187	166	66	58	35%	\$253	121	108	65%	\$467	\$0	\$720	2016	CDFW	CDFW	Prop 117
		Hollenbeck Canyon Wildlife Area, Expansion #7	28	0	10	0	35%	\$84	18	0	65%	\$156	\$0	\$240	PENDING	CDFW	CDFW	Prop 117
Lake Hodges Ecological Reserve	821996	Pilgrim Mitigation Parcels (CALTRANS)	19	19	0	0	0%	\$0	0	0	0%	\$0	\$0	\$0	2002	CDFW	CDFW	N/A
McGinty Mountain Ecological Reserve	821486	McGinty Mountain Expansion #2 -Willow Glen	200	200	110	110	55%	\$357	0	0	0%	\$0	\$583	\$647	1996	CDFW	CDFW	Prop 70
Otay Mountain Ecological Reserve	821509	Otay Mt North	211	211	211	211	100%	\$2,880	0	0	0%	\$0	\$0	\$2,880	1996	CDFW	CDFW	Prop 117 and Prop 70
	822061	Otay Village 15	1,037	1,037	392	392	38%	\$7,376	436	436	42%	\$8,200	\$0	\$19,500	2004	CDFW	CDFW	Prop 12 and Section 6

Appendix 3-C CA Dept of Fish and Wildlife Acquisitions in County SubArea Since 1998 (continued)

Property Name	Parcel History #	Parcel Name	Total Acres	Total Acres in MSCP	State of California Funded				Federal Government Funded				Total Donated Value (000s)	Total Cost of Property	Year	Land Manager	Fee Owner	Funding Source
					Agency's Prorated Acres Purchased	Agency's Prorated Acres in MSCP	Agency % Contribution	Agency's Cost (000s)	Agency's Prorated Acres Purchased	Agency's Prorated Acres in MSCP	Agency % Contribution	Agency's Cost (000s)						
Rancho Jamul Ecological Reserve	821560	Rancho Jamul (Phase 1)	2,268	1,532	627	423	28%	\$1,050	1,641	1,108	72%	\$2,750	\$0	\$3,800	1997	CDFW	CDFW	Prop 117 and Section 6
	821809	Rancho Jamul (Expansion #1)	1,398	986	466	329	33%	\$800	932	657	67%	\$1,600	\$800	\$2,400	1998	CDFW	CDFW	Natural Resources
	821962	Rancho Jamul ER (Expansion #2 - HQ)	40	4	40	4	100%	\$2,000	0	0	0%	\$0	\$0	\$2,000	2001	CDFW	CDFW	Prop 12
	822037	Rancho Jamul Proctor Valley Unit (Villages 14 and 16)	1,463	811	421	233	29%	\$6,475	1,042	577	71%	\$16,025	\$0	\$22,500	2003	USFWS	CDFW	Prop 12 and Section 6
	822074	Rancho Jamul Expansion #3 (CalMat Quarry)	551	551	551	551	100%	\$6,450	0	0	\$0	\$0	\$0	\$6,450	2004	CDFW	CDFW	Prop 12
San Vicente Highlands	821881	Iron Mountain Wildlife Area - Boys & Girls Club	240	240	0	0	0%	\$0	0	0	\$0	\$0	\$803	\$0	2000	CDFW	CDFW	N/A
			1,181	1,181	1,181	1,181	100%	\$3,800	0	0	\$0	\$0	\$0	\$3,800	2000	CDFW	CDFW	Prop 12
	822584	Environmental Trust Bankruptcy (San Vicente)	0	0	0	0	0%	\$0	0	0	\$0	\$0	\$2,160	\$0	2009	CDFW	CDFW	Mitigation
Sycuan Peak Ecological Reserve	821488	Sycuan Peak (Expansion #1)	122	122	122	122	100%	\$413	0	0	\$0	\$0	\$0	\$413	1996	CDFW	CDFW	EEMP
	821554	Sycuan Peak (Expansion #2)	297	297	78	78	26%	\$250	0	0	\$0	\$0	\$0	\$950	1997	CDFW	CDFW	Prop 117, ISTE, EEMP
	821740	Sycuan Peak (Expansion #3)	253	252	253	252	100%	\$700	0	0	\$0	\$0	\$123	\$700	1998	CDFW	CDFW	Prop 70 and Prop 117
	822292	Sycuan Peak (Expansion #4)	601	177	150	44	25%	\$367	451	132	75%	\$1,100	\$0	\$1,467	2006	CDFW	CDFW	Prop 12 and Section 6
	822900	Sycuan Peak (Expansion #5)	76	69	27	24	35%	\$53	49	45	65%	\$97	\$0	\$150	2015	CDFW	CDFW	Prop 117
	822909	Sycuan Peak (Expansion #6)	2	2	1	1	35%	\$11	1	1	65%	\$19	\$0	\$30	2016	CDFW	CDFW	Prop 117
		Sycuan Peak (Expansion #7)	10	0	4	0	35%	\$11	7	0	65%	\$21	\$0	\$32	2016	CDFW	CDFW	Prop 117
Totals			25,694	14,422	14,759	7,743		\$70,929	7,406	3,714		\$41,613	\$7,723	\$121,565				

Appendix 4 Summary of Project Gains



MSCP South San Diego County

From 1/1/2016 To 12/31/2016

County of San Diego

Project Tracking #	Project Name	Location	Applicant	APN	Date Cons.	Status	Mgmt Resp.	Conservation Type	Mit. Bank Credits Used	Acres Outside Habitat Preserve	Acres Inside Habitat Preserve	Total Acres
Segment: Lake Hodges												
16-087	BP Sutton		Sutton	269-100-5600	9/7/2016	Gain	Private	Easement	0.00	4.92	0.00	4.92
Total for Segment: Lake Hodges									0.00	4.92	0.00	4.92
Segment: North Metro Lakeside Jamul												
16-076	BP Bradbury		Bradbury	393-152-1800	9/9/2016	Gain	Private	Easement	0.00	0.61	0.00	0.61
16-075	BP Cornetto		Cornetto	403-442-0400	8/5/2016	Gain	Private	Easement	0.00	0.13	0.00	0.13
16-098	BP Galkin		Galkin	269-202-0700	10/15/2016	Gain	Private	Easement	0.00	0.04	0.00	0.04
16-030	BP Potts		Potts	329-140-5200	6/14/2016	Gain	Private	Easement	0.00	1.44	0.00	1.44
16-130	San Vicente Connection		County of San Diego	324-051-0500	12/29/2016	Gain	Local	Acquisition	0.00	0.00	22.65	22.65
Total for Segment: North Metro Lakeside Jamul									0.00	2.24	22.65	24.89
Segment: South County												
16-086	Beaver Hollow		USFWS	518-070-1000	3/24/2016	Gain	Federal	Acquisition	0.00	0.00	0.00	0.00
16-093	Neuner_Weller		USFWS	598-010-1500 598-010-1700	3/4/2016	Gain	Federal	Acquisition	0.00	0.47	83.04	83.51
16-102	Otay Ranch PA12 (McMillin)		County of San Diego and City of Chula Vista	646-030-3100	10/10/2016	Gain	Local	Acquisition	0.00	0.00	16.84	16.84
16-103	Otay Ranch Village 3		County of San Diego and City of Chula Vista	598-080-0100 598-080-0200 598-080-0300	10/5/2016	Gain	Federal	Acquisition	0.00	0.00	259.73	259.73
16-003	PM 16137		KOY BUILDERS INC.	586-051-0300	10/18/2016	Gain	Private	Easement	0.00	2.91	0.00	2.91
16-090	Proctor Valley		The Nature Conservancy	597-150-1000	5/16/2016	Gain	Non-Profit	Acquisition	0.00	31.46	10.15	41.61
16-095	Reidman		USFWS	585-040-1100	5/17/2016	Gain	Federal	Acquisition	0.00	0.00	41.50	41.50
16-094	Trachtenberg		USFWS	580-040-1300 580-040-1400	5/17/2016	Gain	Federal	Acquisition	0.00	0.00	4.59	4.59
Total for Segment: South County									0.00	34.85	415.85	450.70

Appendix 4 Summary of Project Gains (continued)

County of San Diego

Project Tracking #	Project Name	Location	Applicant	APN	Date Cons.	Status	Mgmt Resp.	Conservation Type	Mit. Bank Credits Used	Acres Outside Habitat Preserve	Acres Inside Habitat Preserve	Total Acres
Segment: South Metro Lakeside Jamul												
16-086	Beaver Hollow		USFWS	518-070-1000	3/24/2016	Gain	Federal	Acquisition	0.00	119.37	0.00	119.37
16-085	BP Attisha		Attisha	519-312-5400	10/10/2016	Gain	Private	Easement	0.00	1.29	0.00	1.29
16-074	BP Shanahan		Shanahan	403-453-1000	8/29/2016	Gain	Private	Easement	0.00	0.21	0.37	0.58
16-104	COI Harris		Harris	599-280-1900	6/21/2016	Gain	Private	Easement	0.00	9.19	0.00	9.19
16-092	Luce Creek		State of California	599-090-2700 599-170-0300	5/16/2016	Gain	State	Acquisition	0.00	301.85	79.39	381.24
16-003	PM 16137		KOY BUILDERS INC.	586-051-0300	10/18/2016	Gain	Private	Easement	0.00	0.01	0.00	0.01
16-001	PM 21379		RENERIA	599-052-0100	10/18/2016	Gain	Private	Easement	0.00	3.86	32.73	36.59
16-091	Skyline 244		Endangered Habitat League	522-081-0700 522-081-0800 522-251-1300 599-041-0100	1/30/2016	Gain	Non-Profit	Acquisition	0.00	238.51	0.18	238.69
16-140	TNC Schooler		USFWS	519-150-0400	12/20/2016	Gain	Federal	Acquisition	0.00	0.00	3.37	3.37
Total for Segment: South Metro Lakeside Jamul									0.00	674.29	116.04	790.33
Total for Agency: County of San Diego									0.00	716.29	554.54	1,270.83

Appendix 5 County Acquisition: San Vicente Connection (Navarro)

County of San Diego San Vicente Connection



Acquisition Name:	San Vicente Connection
Owner:	County of San Diego
Management Agency:	County of San Diego
Acres:	22.65
Acquisition Date:	12/29/2016
Habitrak Tracking Number:	16-130
Source of Funding:	County General Fund
MSCP Segment:	North Metro Lakeside Jamul

MSCP Vegetation Type	Acres
Coastal Sage Scrub	22.65



Legend

- Acquisition
 - County Preserve
 - Prior to Acquisition
 - Parcel Boundaries
 - Freeway
 - MSCP Gain
 - MSCP Loss
- MSCP (South County) Designation**
- Pre-Approved Mitigation Area
 - Unincorporated Land in Metro-Lakeside-Jamul Segment
 - South Plan Boundary

THIS MAP/DATA IS PROVIDED WITHOUT WARRANTY OF ANY KIND, EITHER EXPRESS OR IMPLIED, INCLUDING BUT NOT LIMITED TO, THE IMPLIED WARRANTIES OF MERCHANTABILITY AND FITNESS FOR A PARTICULAR PURPOSE. Note: This product may contain information from the SANDAG Regional Information System which cannot be reproduced without the written permission of SANDAG. This product may contain information reproduced with permission granted by RAND McNALLY & COMPANY to SanGIS. This map is copyrighted by RAND McNALLY & COMPANY. It is unlawful to copy or reproduce all or any part thereof, whether for personal use or resale, without the prior, written permission of RAND McNALLY & COMPANY. Copyright 2011 Eagle Aerial Imaging, all rights reserved. Copyright SanGIS 2011 - All Rights Reserved. Full text of this legal notice can be found at: http://www.sandag.org/legal_notice.htm

Path: P:\mcspl\annual_reports\2016\mxd_pdf\Acq_SanVicenteConnection.mxd - Date: 2/3/2017

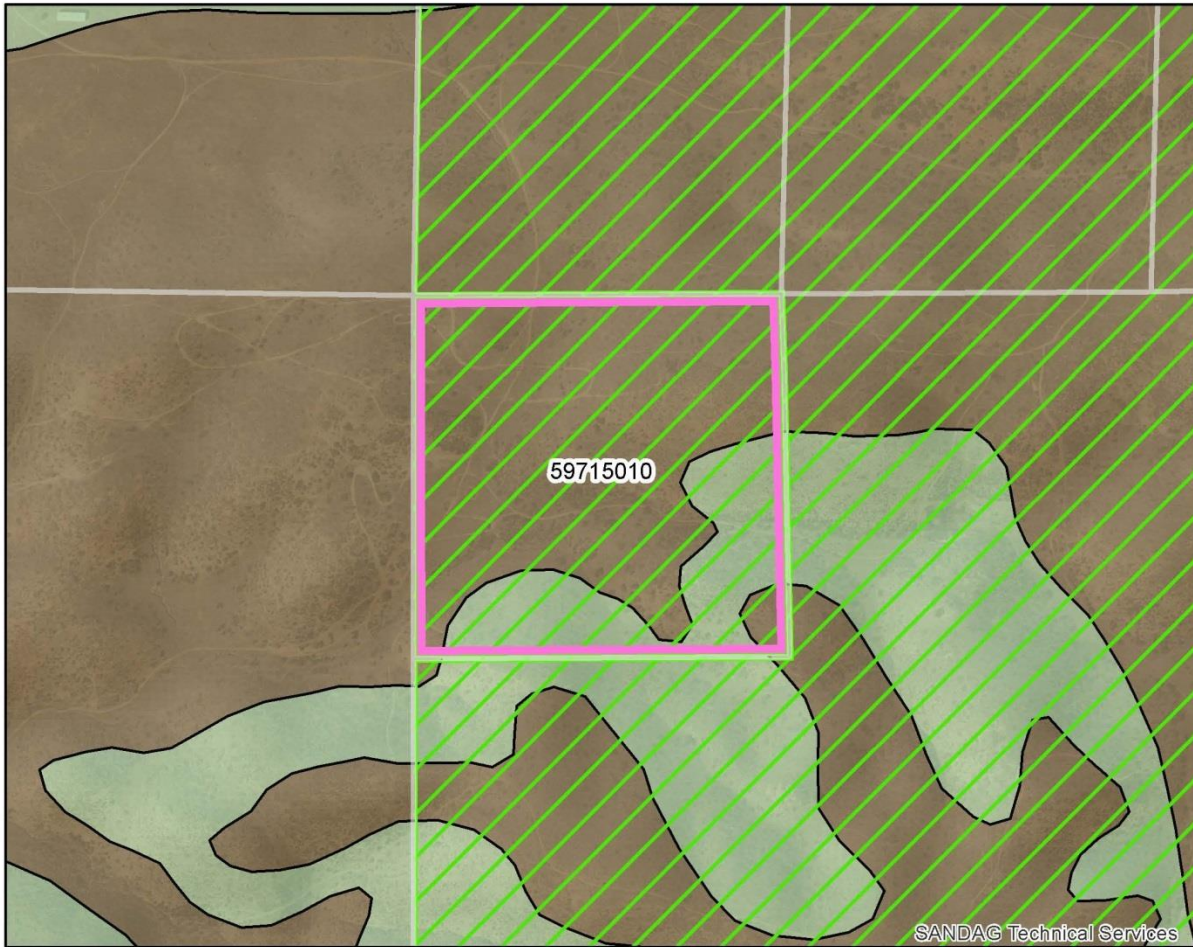


0 250 500 Feet



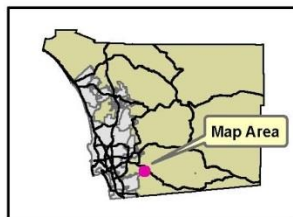
Appendix 6 County Acquisition: The Nature Conservancy (Proctor Valley)

The Nature Conservancy Proctor Valley SSBY Parcel



Acquisition Name:	Proctor Valley SSBY Parcel
Owner:	The Nature Conservancy
Management Agency:	The Nature Conservancy
Acres:	41.62
Acquisition Date:	5/16/2016
Habitrak Tracking Number:	16-090
MSCP Segment:	South County

MSCP Vegetation Type	Acres
Coastal Sage Scrub	41.62



Legend

- Acquisition
 - County Preserve
 - Prior to Acquisition
 - Parcel Boundaries
 - MSCP Gain
 - MSCP Loss
- MSCP (South County) Designation**
- Hardline Preserve
 - Take Authorized Area

THIS MAP/DATA IS PROVIDED WITHOUT WARRANTY OF ANY KIND, EITHER EXPRESS OR IMPLIED, INCLUDING BUT NOT LIMITED TO, THE IMPLIED WARRANTIES OF MERCHANTABILITY AND FITNESS FOR A PARTICULAR PURPOSE. Note: This product may contain information from the SANDAG Regional Information System which cannot be reproduced without the written permission of SANDAG. This product may contain information reproduced with permission granted by RAND McNALLY & COMPANY® to SANDAG. This map is copyrighted by RAND McNALLY & COMPANY®. It is unlawful to copy or reproduce all or any part thereof, whether for personal use or resale, without the prior, written permission of RAND McNALLY & COMPANY®. Copyright 2011 Eagle Aerial Imaging, all rights reserved. Copyright SANDAG 2011. All Rights Reserved. Full text of this legal notice can be found at: http://www.sandag.org/Legal_Notice.htm

Path: P:\mcsplannual_reports\2016\mxd\Acq_ProctorValley.mxd - Date: 12/20/2016



0 250 500 Feet



Appendix 7 Summary of Project Losses

MSCP South San Diego County



From 1/1/2016 To 12/31/2016

County of San Diego

Project Tracking #	Project Name	Location	Applicant	APN	Date of Loss	Status	CEQA Doc.	Activity Type	Acres		Total Acres
									Outside Habitat Preserve	Inside Habitat Preserve	
Segment: Lake Hodges											
16-031	BP O'Meara		O'Meara	267-431-1000	1/28/2016	Loss	0	Single-Family Residential	0.15	0.00	0.15
16-037	BP Rozmus		Rozmus	267-180-7100	3/18/2016	Loss	0	Single-Family Residential	0.16	0.00	0.16
16-087	BP Sutton		Sutton	269-100-5600	9/7/2016	Loss	0	Single-Family Residential	2.00	0.00	2.00
Total for Segment: Lake Hodges									2.30	0.00	2.30
Segment: North Metro Lakeside Jamul											
16-051	BP Abduijalwad		Abduijalwad	269-171-2100	2/23/2016	Loss	0	Single-Family Residential	0.00	0.86	0.86
16-026	BP Boinus		Boinus	393-200-1500	4/15/2016	Loss	0	Single-Family Residential	0.07	0.17	0.24
16-137	BP Borysewics		Borysewics	327-011-4600	11/29/2016	Loss	0	Single-Family Residential	3.34	0.00	3.34
16-076	BP Bradbury		Bradbury	393-152-1800	9/9/2016	Loss	0	Single-Family Residential	0.23	0.00	0.23
16-050	BP Buck		Buck	237-100-4900	2/23/2016	Loss	0	Single-Family Residential	0.15	0.00	0.15
16-044	BP Burkart		Burkart	393-051-2300	1/26/2016	Loss	0	Single-Family Residential	0.14	0.01	0.14
16-099	BP Chapin		Chapin	269-172-0600	11/2/2016	Loss	0	Single-Family Residential	0.84	0.12	0.96
16-084	BP Dabbs		Dabbs	396-202-1000	9/30/2016	Loss	0	Single-Family Residential	1.44	0.00	1.44
16-053	BP Detrinidad		Detrinidad	285-150-1500	8/12/2016	Loss	0	Single-Family Residential	0.22	0.00	0.22
16-066	BP Eagle Gas		Eagle Gas	400-381-0200	8/31/2016	Loss	0	Commercial	0.36	0.00	0.36
16-077	BP Edwards		Edwards	395-431-3300	7/28/2016	Loss	0	Single-Family Residential	0.00	0.08	0.08
16-028	BP Flud		Flud	241-080-2400	1/1/2016	Loss	0	Single-Family Residential	1.77	0.00	1.77
16-067	BP Frers		Frers	397-240-5000	5/13/2016	Loss	0	Single-Family Residential	0.14	0.03	0.18
16-098	BP Galkin		Galkin	269-202-0700	10/15/2016	Loss	0	Single-Family Residential	1.05	0.00	1.05

Appendix 7 Summary of Project Losses (continued)

County of San Diego

Project Tracking #	Project Name	Location	Applicant	APN	Date of Loss	Status	CEQA Doc.	Activity Type	Acres Outside Habitat Preserve	Acres Inside Habitat Preserve	Total Acres
Segment: North Metro Lakeside Jamul											
16-017	BP Haider		Haider	269-171-2300	7/15/2016	Loss	0	Single-Family Residential	0.09	0.30	0.40
16-025	BP Heuslein		Heuslein	395-311-0800	4/19/2016	Loss	0	Single-Family Residential	0.80	0.00	0.80
16-089	BP High Meadows Ranch		High Meadows Ranch	389-020-1300	10/5/2016	Loss	0	Single-Family Residential	0.00	1.26	1.26
16-101	BP Hubbard		Hubbard	398-390-3900	10/31/2016	Loss	0	Single-Family Residential	0.37	0.00	0.37
16-096	BP Hurrell		Hurrell	392-070-1000	11/18/2016	Loss	0	Single-Family Residential	0.64	0.00	0.64
16-016	BP Kamaksisian		Kamaksisian		7/8/2016	Loss	0	Single-Family Residential	0.10	0.00	0.10
16-014	BP Kinninger		Kinninger	305-050-1600	6/15/2016	Loss	0	Single-Family Residential	0.85	0.00	0.85
16-032	BP Klopp		Klopp	327-110-4300	3/23/2016	Loss	0	Single-Family Residential	0.00	0.23	0.23
16-036	BP Locke		Locke	404-012-4200	3/11/2016	Loss	0	Single-Family Residential	0.45	0.00	0.45
16-061	BP Madden		Madden	390-040-5200	9/30/2016	Loss	0	Single-Family Residential	0.00	2.18	2.18
16-059	BP Mahan		Mahan	379-102-3400	9/9/2016	Loss	0	Single-Family Residential	0.51	0.00	0.51
16-020	BP Mathe		Mathe		6/30/2016	Loss	0	Single-Family Residential	0.16	0.00	0.16
16-033	BP McNeil		McNeil	393-040-0400	3/4/2016	Loss	0	Single-Family Residential	0.71	0.35	1.05
16-068	BP Morgan		Morgan	239-290-4000	7/19/2016	Loss	0	Single-Family Residential	0.82	0.00	0.82
16-038	BP Nevarez		Nevarez	285-030-2400	3/3/2016	Loss	0	Single-Family Residential	1.27	0.00	1.27
16-058	BP Oak Valley Ranch		Oak Valley Ranch	327-020-3200	9/7/2016	Loss	0	Single-Family Residential	0.85	0.00	0.85
16-042	BP Pedersen		Pedersen	327-070-2800	2/3/2016	Loss	0	Single-Family Residential	0.00	0.19	0.19
16-052	BP Pinedo		Pinedo	241-160-1400	4/4/2016	Loss	0	Single-Family Residential	0.32	0.00	0.32
16-030	BP Potts		Potts	329-140-5200	6/14/2016	Loss	0	Single-Family Residential	3.16	0.00	3.16
16-134	BP Rancho Developers		Rancho Developers	329-150-0800	12/5/2016	Loss	0	Single-Family Residential	0.89	0.00	0.89
16-047	BP Richardson		Richardson	237-090-5900	1/14/2016	Loss	0	Single-Family Residential	0.24	0.00	0.24

Appendix 7 Summary of Project Losses (continued)

County of San Diego

Project Tracking #	Project Name	Location	Applicant	APN	Date of Loss	Status	CEQA Doc.	Activity Type	Acres Outside Habitat Preserve	Acres Inside Habitat Preserve	Total Acres
Segment: North Metro Lakeside Jamul											
16-073	BP Roesch		Roesch	237-100-4100	9/22/2016	Loss	0	Single-Family Residential	1.42	0.00	1.42
16-063	BP Russell		Russell	396-052-1400	9/22/2016	Loss	0	Single-Family Residential	1.42	0.00	1.42
16-131	BP Ryan		Ryan	237-161-0700	12/21/2016	Loss	0	Single-Family Residential	0.47	0.00	0.47
16-018	BP Zhang		Zhang	269-182-0600	7/15/2016	Loss	0	Single-Family Residential	0.10	0.00	0.10
16-124	COI Art Marble and Tile LLC		Art Marble and Tile LLC	241-080-5200	7/7/2016	Loss	0	Single-Family Residential	4.95	0.00	4.95
16-128	COI Baker		Baker Family Trust	272-361-5500	12/21/2016	Loss	0	Single-Family Residential	1.03	0.00	1.03
16-119	COI Coffman Family Trust		Coffman Family Trust	278-372-1600	4/5/2016	Loss	0	Single-Family Residential	4.36	0.00	4.36
16-118	COI Coffman Family Trust		Coffman Family Trust	278-372-1700	4/5/2016	Loss	0	Single-Family Residential	4.09	0.00	4.09
16-116	COI Dabbs		Dabbs	396-202-1000	9/30/2016	Loss	0	Single-Family Residential	0.62	0.00	0.62
16-120	COI Kingsley		Kingsley	239-360-3500	6/6/2016	Loss	0	Single-Family Residential	4.01	0.00	4.01
16-117	COI Musella		Musella	303-060-2800	3/29/2016	Loss	0	Single-Family Residential	2.74	0.00	2.74
16-112	COI Phillips		Phillips	403-151-0900	3/30/2016	Loss	0	Single-Family Residential	1.12	0.00	1.12
16-125	COI Roesch		Roesch	237-100-4100	6/10/2016	Loss	0	Single-Family Residential	2.91	0.00	2.91
16-113	COI Russell		Russell	402-140-4100	1/25/2016	Loss	0	Single-Family Residential	4.13	0.16	4.29
16-123	COI Salma		Salma	269-171-2300	4/14/2016	Loss	0	Single-Family Residential	0.05	0.08	0.12
Total for Segment: North Metro Lakeside Jamul									55.39	6.00	61.40
Segment: South County											
16-132	BP Metivier		Metivier	596-210-2900	12/20/2016	Loss	0	Single-Family Residential	0.00	0.27	0.27
16-072	BP Ohrmond		Ohrmond	595-050-1500	9/14/2016	Loss	0	Single-Family Residential	0.00	0.20	0.20
16-002	PM 16097		SOUTH COUNTY COMMERCE CENTER	646-130-6900 646-130-7000 646-130-7100 646-130-7200	3/9/2016	Loss	0	Industrial	63.43	0.00	63.43

Appendix 7 Summary of Project Losses (continued)

County of San Diego

Project Tracking #	Project Name	Location	Applicant	APN	Date of Loss	Status	CEQA Doc.	Activity Type	Acres Outside Habitat Preserve	Acres Inside Habitat Preserve	Total Acres
Segment: South County											
16-003	PM 16137		KOY BUILDERS INC.	586-051-0300	9/19/2016	Loss	0	Single-Family Residential	4.71	0.00	4.71
Total for Segment: South County									68.14	0.48	68.62
Segment: South Metro Lakeside Jamul											
16-126	AG Nencini		Nencini and Associates LLC	585-113-2200	1/14/2016	Loss	0	Agriculture	10.51	0.00	10.51
16-055	BP Abushaban		Abushaban	515-082-1700	8/19/2016	Loss	0	Single-Family Residential	0.81	0.06	0.87
16-015	BP Alfaro		Alfaro	599-200-5600	7/11/2016	Loss	0	Single-Family Residential	1.86	0.00	1.86
16-056	BP Andrus		Andrus	520-302-1400	8/25/2016	Loss	0	Single-Family Residential	1.63	0.00	1.63
16-008	BP Anguiano Solar Install		Francisco Anguiano	589-080-4100	5/27/2016	Loss	0	Single-Family Residential	0.05	0.00	0.05
16-100	BP Baker		Baker	522-102-0100	11/1/2016	Loss	0	Single-Family Residential	0.00	0.91	0.91
16-021	BP Beat		Beat	513-120-4700	6/29/2016	Loss	0	Single-Family Residential	2.07	0.00	2.07
16-013	BP Bertram		David Bertram	509-010-4700	7/12/2016	Loss	0	Single-Family Residential	0.75	0.03	0.77
16-139	BP Bush		Bush	399-030-4000	12/13/2016	Loss	0	Single-Family Residential	0.00	1.29	1.29
16-004	BP Carnation Solar Install		Cheryl Carnation	597-050-3100	5/26/2016	Loss	0	Single-Family Residential	0.17	0.00	0.17
16-065	BP Cellars		Cellars	596-270-0500	9/28/2016	Loss	0	Single-Family Residential	0.26	0.00	0.26
16-011	BP Cook Remodel		John Cook	398-440-1600	5/2/2016	Loss	0	Single-Family Residential	0.23	0.05	0.29
16-048	BP Daniel		Daniel	517-320-0300	2/25/2016	Loss	0	Single-Family Residential	0.17	0.00	0.17
16-040	BP Day		Day	599-080-1400	2/26/2016	Loss	0	Single-Family Residential	0.07	0.00	0.07
16-057	BP Dehesa		Dehesa	520-020-2100	8/26/2016	Loss	0	Single-Family Residential	1.12	0.00	1.12
16-041	BP Demars		Demars	599-062-0700	2/12/2016	Loss	0	Single-Family Residential	0.05	0.15	0.21
16-046	BP Durrell		Durrell	398-150-4000	1/20/2016	Loss	0	Single-Family Residential	0.59	0.00	0.59
16-012	BP Flores New Guest Quarters		Ana Flores	599-062-1400	6/2/2016	Loss	0	Single-Family Residential	0.00	0.04	0.04

Appendix 7 Summary of Project Losses (continued)

County of San Diego

Project Tracking #	Project Name	Location	Applicant	APN	Date of Loss	Status	CEQA Doc.	Activity Type	Acres Outside Habitat Preserve	Acres Inside Habitat Preserve	Total Acres
Segment: South Metro Lakeside Jamul											
16-079	BP Gibson		Gibson	398-130-2500	10/25/2016	Loss	0	Single-Family Residential	1.65	0.00	1.65
16-088	BP Gonzalez		Gonzalez	600-051-1100	9/9/2016	Loss	0	Single-Family Residential	1.09	0.00	1.09
16-082	BP Grayhound Adoption Center		Grayhound Adoption Center	516-030-1400	10/18/2016	Loss	0	Commercial	0.17	0.09	0.26
16-049	BP Grygiel		Grygiel	517-220-1600	2/24/2016	Loss	0	Single-Family Residential	0.48	0.00	0.48
16-039	BP Helms		Helms	600-131-3300	3/1/2016	Loss	0	Single-Family Residential	0.18	0.00	0.18
16-069	BP Hendrix		Hendrix	597-050-4900	8/29/2016	Loss	0	Single-Family Residential	1.07	0.00	1.07
16-024	BP Hibrahim		Hibrahim	519-324-1000	4/20/2016	Loss	0	Single-Family Residential	0.06	0.22	0.28
16-027	BP Hix Snedeker		Hix Snedeker Lakeside LLC	395-250-21	4/8/2016	Loss	0	Commercial	3.69	0.00	3.69
16-023	BP Knox		Knox	520-090-4100	6/23/2016	Loss	0	Single-Family Residential	2.62	0.00	2.62
16-097	BP Knox		Knox	520-090-4100	11/14/2016	Loss	0	Single-Family Residential	0.12	0.00	0.12
16-083	BP Kohl		Kohl	404-020-0700	10/18/2016	Loss	0	Single-Family Residential	0.18	0.00	0.18
16-034	BP Kownaki		Kownaki	403-320-1300	3/11/2016	Loss	0	Single-Family Residential	0.86	0.00	0.86
16-054	BP Kripanarayanan		Kripanarayanan	520-050-2800	8/12/2016	Loss	0	Single-Family Residential	0.19	0.00	0.19
16-138	BP Lyon		Lyon	520-050-1100	12/30/2016	Loss	0	Single-Family Residential	0.86	0.00	0.86
16-135	BP MacArthur		MacArthur	579-352-2500	12/2/2016	Loss	0	Single-Family Residential	0.15	0.00	0.15
16-136	BP MacArthur		MacArthur	579-352-2600	12/2/2016	Loss	0	Single-Family Residential	0.14	0.00	0.14
16-080	BP Mack		Mack	401-061-2900	1/1/2016	Loss	0	Single-Family Residential	0.84	0.00	0.84
16-005	BP Mattazaro Workshop		Jeff Mattazaro	507-530-25	5/26/2016	Loss	0	Single-Family Residential	0.16	0.00	0.16
16-070	BP Mikha		Mikha	508-031-3100	9/12/2016	Loss	0	Single-Family Residential	0.59	0.00	0.59
16-035	BP Minich		Minich	602-062-0400	3/11/2016	Loss	0	Single-Family Residential	1.84	0.00	1.84
16-060	BP Nencini		Nencini	585-113-2200	2/2/2016	Loss	0	Single-Family Residential	2.94	0.00	2.94

Appendix 7 Summary of Project Losses (continued)

County of San Diego

Project Tracking #	Project Name	Location	Applicant	APN	Date of Loss	Status	CEQA Doc.	Activity Type	Acres Outside Habitat Preserve	Acres Inside Habitat Preserve	Total Acres
Segment: South Metro Lakeside Jamul											
16-010	BP Nevins Addition		Patrick Nevins	401-091-04	4/11/2016	Loss	0	Single-Family Residential	0.55	0.00	0.55
16-133	BP Owens		Owens	503-052-2600	12/6/2016	Loss	0	Single-Family Residential	0.54	0.00	0.54
16-007	BP Pann Solar install		Landon Pann	522-030-3300	5/18/2016	Loss	0	Single-Family Residential	0.15	0.00	0.15
16-019	BP Rader		Radar	504-211-0400	6/22/2016	Loss	0	Single-Family Residential	1.11	0.00	1.11
16-009	BP Rikard Pool install		Scott Rikard	508-020-11	4/21/2016	Loss	0	Single-Family Residential	0.22	0.00	0.22
16-071	BP Ross		Ross	399-350-1300	8/3/2016	Loss	0	Single-Family Residential	0.02	0.05	0.06
16-062	BP Salinas		Salinas	513-011-2000	10/4/2016	Loss	0	Single-Family Residential	0.08	1.71	1.79
16-029	BP Sanders		Sanders	498-153-4700	4/7/2016	Loss	0	Single-Family Residential	0.64	0.00	0.64
16-022	BP Sims		Sims	600-131-0500	6/27/2016	Loss	0	Single-Family Residential	0.12	0.00	0.12
16-064	BP Smith		Smith	522-020-6000	9/14/2016	Loss	0	Single-Family Residential	0.55	0.60	1.15
16-006	BP Smith Solar Install		Tabitha Smith	520-012-1100	5/17/2016	Loss	0	Single-Family Residential	0.14	0.00	0.14
16-043	BP Trudgeon		Trudgeon	596-140-1000	1/19/2016	Loss	0	Single-Family Residential	0.11	0.00	0.11
16-078	BP Wangelin		Wangelin	599-101-0700	8/11/2016	Loss	0	Single-Family Residential	0.00	0.21	0.21
16-081	BP Weaver		Weaver	600-170-1000	10/18/2016	Loss	0	Single-Family Residential	0.18	0.00	0.18
16-045	BP Wood		Wood	596-161-2400	1/21/2016	Loss	0	Single-Family Residential	3.10	0.00	3.10
16-106	COI Andrus Trust		Andrus Trust	520-302-1400	3/2/2016	Loss	0	Single-Family Residential	1.49	0.00	1.49
16-107	COI Beat		Beat	513-120-4700	4/13/2016	Loss	0	Single-Family Residential	1.93	0.00	1.93
16-110	COI Cheslock		Cheslock	497-030-3900	11/23/2016	Loss	0	Single-Family Residential	1.35	0.00	1.35
16-111	COI Desert Springs LLC		Desert Springs LLC	493-350-1700	11/23/2016	Loss	0	Single-Family Residential	0.64	0.00	0.64
16-108	COI Essa		Essa	497-222-5600	7/14/2016	Loss	0	Single-Family Residential	1.63	0.00	1.63
16-104	COI Harris		Harris		6/21/2016	Loss	0	Single-Family Residential	4.60	0.00	4.60

Appendix 7 Summary of Project Losses (continued)

County of San Diego

Project Tracking #	Project Name	Location	Applicant	APN	Date of Loss	Status	CEQA Doc.	Activity Type	Acres Outside Habitat Preserve	Acres Inside Habitat Preserve	Total Acres
Segment: South Metro Lakeside Jamul											
16-109	COI KSR Development		KSR Development	497-202-3200	5/25/2016	Loss	0	Single-Family Residential	0.41	0.00	0.41
16-114	COI McLean		McLean	399-270-0100	5/25/2016	Loss	0	Single-Family Residential	0.30	0.00	0.30
16-129	COI McLean		McLean	513-092-3800	12/20/2016	Loss	0	Single-Family Residential	0.00	1.99	1.99
16-115	COI McLean		McLean	399-240-0100	5/26/2016	Loss	0	Single-Family Residential	0.20	0.00	0.20
16-105	COI Merritt		Merritt	596-171-3100	10/3/2016	Loss	0	Single-Family Residential	2.87	0.00	2.87
16-121	COI Roberts		Roberts	513-062-5000	5/26/2016	Loss	0	Single-Family Residential	0.15	1.84	2.00
16-122	COI Salinas		Salinas	513-011-2000	1/8/2016	Loss	0	Single-Family Residential	0.00	0.21	0.21
16-003	PM 16137		KOY BUILDERS INC.	586-051-0300	9/19/2016	Loss	0	Single-Family Residential	0.07	0.08	0.15
16-001	PM 21379		Renteria	595-052-0100	7/15/2016	Loss	0	Single-Family Residential	8.94	14.08	23.02
Total for Segment: South Metro Lakeside Jamul									72.35	23.61	95.96
Total for Agency: County of San Diego									198.19	30.09	228.28

Appendix 8 Summary of Habitat Losses and Gains

ÁPlan: MSCP South San Diego County

Project Gain Status: Gain

Date Range: 1/1/2016 - 12/31/2016

Project Loss Status: Loss



County of San Diego	Acres Inside the Habitat Preserve Planning Area						Acres Outside the Habitat Preserve				Total Acres			
	Target Cons.	Habitat Loss		Habitat Gain			Habitat Loss		Habitat Gain		Habitat Loss		Habitat Gain	
		Current Period	Cummulative	Current Period	Cummulative	Cons. to Date %	Current Period	Cummulative	Current Period	Cummulative	Current Period	Cummulative	Current Period	Cummulative
Beach	0	0.00	0.00	0.00	0.00		0.00	0.00	0.00	0.00	0.00	0.00	0.00	0.00
Saltpan	0	0.00	0.00	0.00	0.00		0.00	0.00	0.00	0.00	0.00	0.00	0.00	0.00
Southern Foredunes	0	0.00	0.00	0.00	0.00		0.00	0.00	0.00	0.00	0.00	0.00	0.00	0.00
Southern Coastal Bluff Scrub	0	0.00	0.00	0.00	0.00		0.00	0.00	0.00	0.00	0.00	0.00	0.00	0.00
Coastal Sage Scrub	42,873	6.59	650.87	367.55	28,984.47	67.61 %	13.47	1,315.27	186.41	7,634.45	20.07	1,966.14	553.96	36,618.92
Maritime Succulent Scrub	6	0.00	0.00	0.00	3.89	64.77 %	0.00	0.00	0.00	8.23	0.00	0.00	0.00	12.12
Chaparral	39,871	18.04	292.71	144.10	33,601.12	84.27 %	34.78	2,850.93	479.49	9,269.36	52.83	3,143.65	623.59	42,870.48
Southern Maritime Chaparral	5	0.00	1.95	0.00	5.82	116.31 %	0.00	10.04	0.00	22.66	0.00	11.99	0.00	28.47
Coastal Sage-Chaparral Scrub	1,325	0.00	12.43	0.00	1,006.12	75.93 %	0.45	132.96	0.00	1,104.54	0.45	145.39	0.00	2,110.66
Grassland	3,171	0.37	50.03	4.25	1,957.74	61.74 %	29.57	1,159.32	2.03	977.48	29.93	1,209.35	6.28	2,935.22
Southern Coastal Salt Marsh	0	0.00	0.00	0.00	0.00		0.00	0.00	0.00	0.00	0.00	0.00	0.00	0.00
Freshwater Marsh	233	0.00	0.06	3.03	135.32	58.08 %	0.00	4.46	0.09	59.74	0.00	4.52	3.12	195.05
Riparian Forest	348	0.00	0.45	0.00	291.90	83.88 %	0.00	2.00	0.00	71.65	0.00	2.45	0.00	363.55
Oak Riparian Forest	2,192	0.13	32.66	12.68	1,001.38	45.68 %	0.27	46.92	21.69	467.80	0.40	79.58	34.37	1,469.18
Riparian Woodland	20	0.00	0.00	0.00	10.88	54.39 %	0.00	0.00	0.00	6.45	0.00	0.00	0.00	17.33
Riparian Scrub	383	0.00	4.28	0.00	105.43	27.53 %	0.21	14.37	0.00	68.32	0.21	18.66	0.00	173.76
Oak Woodland	2,211	2.67	40.44	21.94	1,108.55	50.14 %	1.45	150.35	12.98	462.48	4.12	190.79	34.93	1,571.03
Torrey Pine Forest	0	0.00	0.00	0.00	0.00		0.00	0.00	0.00	0.00	0.00	0.00	0.00	0.00
Tecate Cypress Forest	5,589	0.00	0.00	0.00	5,601.41	100.22 %	0.00	0.00	0.00	0.00	0.00	0.00	0.00	5,601.41
Eucalyptus Woodland	105	0.00	9.19	0.00	44.13	42.03 %	0.34	413.94	0.00	66.82	0.34	423.13	0.00	110.95
Open Water	149	0.00	0.00	0.00	38.93	26.13 %	0.00	6.24	0.00	33.15	0.00	6.24	0.00	72.09
Disturbed Wetland	90	0.00	1.99	0.00	78.70	87.44 %	0.00	16.25	0.00	25.99	0.00	18.24	0.00	104.69
Natural Floodchannel	225	0.00	0.00	0.00	30.76	13.67 %	0.00	0.00	0.00	4.83	0.00	0.00	0.00	35.59
Shallow Bays	0	0.00	0.00	0.00	0.00		0.00	0.00	0.00	0.00	0.00	0.00	0.00	0.00
Pacific Ocean/Deep Bay	0	0.00	0.00	0.00	0.00		0.00	0.00	0.00	0.00	0.00	0.00	0.00	0.00
Disturbed Land	0	1.43	107.05	0.90	449.09		11.91	700.66	0.04	361.41	13.33	807.71	0.94	810.51
Agriculture	0	0.30	95.56	0.09	544.28		72.24	1,330.40	10.56	2,318.35	72.55	1,425.95	10.65	2,862.62
Urban/Developed	0	0.56	40.85	0.00	73.39		33.50	2,005.39	2.99	561.22	34.06	2,046.24	2.99	634.61
Agency Total:		30.09	1,340.53	554.54	75,073.31		198.19	10,159.51	716.29	23,524.94	228.28	11,500.04	1,270.83	98,598.25

Note: The Agriculture and Urban/Developed category is included to account for all land included within a project and habitat preserve planning area.



AG7 D'Gci H 'GUb'8]Y[c'7 ci blm

From 1/1/2016 To 12/31/2016

Project Gain Status: Gain

Project Loss Status: Loss

County of San Diego	HcHU'Gi VUFYU <UV]HhDfYgYfj Y	7 cbgYfj U]cb' HUF[Yh	9gha UHX'HU_Y	7 cbgYfj U]cb'FU]c	7 i a i`UHj Y 7 cbgYfj U]cb' -bg]XY<UV]Hh DfYgYfj Y	AU "5`ck UV'Y-a dUWg' Zf'H Y7i ffYbhDYfjcX	5WU U'@gg'-bg]XY' <UV]HhDfYgYfj YZf' 7i ffYbhDYfjcX	Z'cf!'AU " 5`ck UV'Y-a dUWg
Beach	0	0	0	0.00	0.00	0.00	0.00	n/a
Saltpan	0	0	0	0.00	0.00	0.00	0.00	n/a
Southern Foredunes	0	0	0	0.00	0.00	0.00	0.00	n/a
Southern Coastal Bluff Scrub	0	0	0	0.00	0.00	0.00	0.00	n/a
Coastal Sage Scrub	23,569	18,717	4,852	3.86	12,021.93	3,290.00	17.59	-
Maritime Succulent Scrub	0	0	0	0.00	0.00	0.00	0.00	n/a
Chaparral	22,179	18,662	3,517	5.31	13,665.42	2,669.52	52.83	-
Southern Maritime Chaparral	0	0	0	0.00	0.00	0.00	0.00	n/a
Coastal Sage-Chaparral Scrub	1,366	1,152	214	5.38	821.50	158.74	0.45	-
Grassland	2,145	1,741	404	4.31	1,089.47	267.93	25.13	-
Southern Coastal Salt Marsh	0	0	0	0.00	0.00	0.00	0.00	n/a
Freshwater Marsh	15	15	0	0.00	6.75	0.00	0.00	n/a
Riparian Forest	84	84	0	0.00	75.87	0.00	0.00	n/a
Oak Riparian Forest	2,044	2,043	1	2,043.00	929.37	0.51	0.40	-
Riparian Woodland	6	6	0	0.00	4.24	0.00	0.00	n/a
Riparian Scrub	298	298	0	0.00	41.18	0.00	0.21	+
Oak Woodland	2,355	1,912	443	4.32	1,022.32	257.48	4.12	-
Torrey Pine Forest	0	0	0	0.00	0.00	0.00	0.00	n/a
Tecate Cypress Forest	0	0	0	0.00	0.00	0.00	0.00	n/a
Eucalyptus Woodland	53	41	12	3.42	13.17	4.67	0.34	-
Open Water	124	124	0	0.00	18.39	0.00	0.00	n/a
Disturbed Wetland	52	52	0	0.00	46.80	0.00	0.00	n/a
Natural Floodchannel	197	197	0	0.00	12.81	0.00	0.00	n/a
Shallow Bays	0	0	0	0.00	0.00	0.00	0.00	n/a
Pacific Ocean/Deep Bay	0	0	0	0.00	0.00	0.00	0.00	n/a
Disturbed Land	1,259	0	1,259	0.00	247.89	0.00	13.30	+
Agriculture	1,608	0	1,608	0.00	485.44	0.00	9.01	+

Appendix 9 Habitat Conservation Accounting Model (continued)

<i>County of San Diego</i>	Total Subarea Habitat Preserve	Conservation Target	Estimated Take	Conservation Ratio	Cumulative Conservation Inside Habitat Preserve	Max. Allowable Impacts for the Current Period	Actual Loss Inside Habitat Preserve for Current Period	+ or - Max. Allowable Impacts
Urban/Developed	0	0	0	0.00	29.99	0.00	33.99	+
Total Acres for Agency: County of San Diego					30,532.54		157.36	

Note: The Agriculture and Urban/Developed category is included to account for all land included within a project and habitat preserve planning area.

This report only pertains to the Metro-Lakeside-Jamul segment of the County 's subarea plan. It includes gains that occur within the Preapproved Mitigation Area (PAMA) while counting all losses within the entire segment.

Appendix 10 Mitigation Bank Status

	Coast Live Oak Woodland	Coastal Sage Scrub	Disturbed/Ruderal	Engelmann Oak Woodland	Marsh/ Riparian Scrub/Floodplain	Mixed Chaparral	Native Grasslands	Non-Native Grasslands	Southern Willow Scrub	Southern Riparian/ Oak Woodland	Totals
Boden Canyon											
Total	0.8	10.2	0	2.5	0	14.9	0.1	1	0	10	39.5
Used	0.8	10.2	0	2.5	0	0	0	0.32	0	10	23.82
Remaining	0	0	0	0	0	14.9	0.1	0.68	0	0	15.68
Old Castle											
Total	0.62	41.2	0	0	0	17.95	0	0	0.25	0	60.02
Used	0.62	40.856	0	0	0	1.33	0	0	0.11	0	42.916
Remaining	0	0.344	0	0	0	16.62	0	0	0.14	0	17.104
Rancho San Diego											
Total	4.8	226.2	80.3	0	2.4	19.6	3.4	0	0	72.5	409.2
Used	2.85	125.8897	6.215	0	0.34	7.63	0.51	0	0	16.7	160.1347
Remaining	1.95	100.3103	74.085	0	2.06	11.97	2.89	0	0	55.8	249.0653
Singing Hills											
Total	0	69.7	0	0	0	0	0	0	0	0	69.7
Used	0	0.695	0	0	0	0	0	0	0	0	0.695
Remaining	0	69.005	0	0	0	0	0	0	0	0	69.005
Sweetwater											
Total	0	0	0	0	24.33	0	0	0	0	0	24.33
Used	0	0	0	0	15.394	0	0	0	0	0	15.394
Remaining	0	0	0	0	8.936	0	0	0	0	0	8.936
Total Remaining	1.95	169.6593	74.085	0	10.996	43.49	2.99	0.68	0.14	55.8	359.7903

Appendix 11 COIs Issued for Clearing for Single-Family Residences on Small Parcel

Date Issued	APN	Acres Allowed to be Cleared by BMO	Actual Site Acreage
1/6/2016	239-360-35	5	4.01
1/8/2016	513-011-20	2	2.74
1/25/2016	402-140-41	5	3.80
3/2/2016	520-302-14	5	3.12
3/29/2016	303-060-28	5	2.74
3/30/2016	403-151-09	5	1.31
4/5/2016	278-372-16	5	4.45
4/5/2016	278-372-17	5	4.02
4/13/2016	513-120-47	5	4.12
4/14/2016	269-171-23	2	2.84
5/25/2016	399-270-01	5	0.30
5/25/2016	497-202-32	10	0.42
5/26/2016	399-240-01	5	0.19
5/26/2016	513-062-50	2	5.61
6/10/2016	237-100-35,41	5	6.33
6/21/2016	599-280-19	5	19.55
7/14/2016	497-222-56	5	1.66

Date Issued	APN	Acres Allowed to be Cleared by BMO	Actual Site Acreage
9/30/2016	396-202-10	2	2.00
10/3/2016	596-171-31	5	2.77
11/23/2016	493-350-17	5	0.64
11/23/2016	497-030-39	5	1.30
12/7/2016	241-080-52	5	7.44
12/20/2016	513-092-38	2	4.10
12/21/2016	272-361-55	5	1.05

Appendix 12 COIs Issued for Agricultural Clearing

Date COI	APN	Permit Number	Site Name	Acres
12/11/00	399-020-17	AE301	Gibson	28.60
03/16/01	513-080-23	AE01-005	Boney	2.00
01/14/04	285-030-10	AD03-051	Royden	9.86
01/14/04	327-011-03	AD03-051	Royden	42.72
08/09/04	375-171-03	AD 04-048	Shank	1.00
08/09/04	375-171-04	AD 04-048	Shank	1.00
3/31/2011	Portions of 389-091-05, -06, -25	None	High Meadow Ranch	6.55
8/10/2011	240-270-58, 242-010-71, 242-010-72, 242-030-37, 242-030-38, 242-031-03, 242-080-01, 242-080-07, 243-110-01, 243-110-04, 243-150-05, 244-020-04	AD 11-017	Rancho Guejito	763.00
10/13/2011	242-070-07	AD 09-058	Rockwood Ranch	29.30
2/12/2015	242-070-07	None	Rancho Guejito	13.77
7/2/2015	243-020-05,07,10, 243-030-02, 243-070-01,08	PDS2015- LDGRMN-20025	Vineyard Ranch	35.9
12/3/2015	242-010-71,73, 242-030-38, 242-070-09,12,13,14, 242-270-57	PDS2015- LDGRMJ-30016	Rancho Guejito	279.1
1/14/2016	585-113-22	PDS2015-AD-15- 013	Nencini	10.9
Total				1223.7

Appendix 13 Stewardship/Management Completed on County Lands in 2016

Preserve	Status	Rsrch	Invas. Spec. Control + Removal	Signage Install/ Repair + Access Control	Trail Maint. & Repair/ Restoration	Fuel Mgmt	Fencing Install/ Repair	New Wildlife Drinking Station(s)	Environ. Education	Habitat Restoration	Hazardous Tree Removal
Barnett Ranch Preserve	Open	Yes	0.5 acs	2 new signs	200 ft	20 ft	n/a	n/a	2 docent tours + Girl Scouts hike	10 trees ordered to be planted	3 Coast Live Oaks
Boulder Oaks Preserve	Closed	Yes	7 acs	5 new signs	2 mi	30 ft	n/a	n/a	n/a	10 new trees planted	12 oaks removed
Del Dios Highlands Preserve	Open	Yes	1 acre	n/a	1 mi	140 ft	n/a	n/a	n/a	n/a	n/a
El Capitan Preserve	Open	Yes	1 acre	44 trail markers	3 mi	n/a	n/a	n/a	100 hours	n/a	2 large trees
El Monte Park	Open	Yes	2 species, ongoing throughout 88 acs	15 signs, 1 kiosk	~4.5 mi	4 acs	300 ft	n/a	18 hrs	1.4 acs of mitigation; >50 seedlings planted	3 large Oak trees
Flinn Springs MSCP	Open	No	0.1 acs	9 new signs	~0.5 mi	0.5 acs	N	n/a	14 hrs	n/a	n/a
Furby-North Property	Closed	Yes	0.5 acs	Ongoing; 20 out of 26 signs installed	Y; no acreage given	n/a	Ongoing; 3,736 of 4,670 ft installed	n/a	n/a	n/a	n/a
Lakeside Linkage Preserve	Open	Yes	n/a	n/a	1.5 mi	3 acs	n/a	n/a	n/a	5 acs	2 trees
Lawrence and Barbara Daley Preserve	Closed	Yes	5 acs	n/a	n/a	3 acs	n/a	n/a	n/a	n/a	n/a
Lusardi Creek Preserve	Open	Yes	n/a	n/a	n/a	0.88 acs	n/a	n/a	n/a	1 ac	2 trees
Oakoasis Preserve	Open	Yes	1000 ft ²	n/a	1.06 mi	200 yds ³	10 ft fence	n/a	14 programs	n/a	2 large trees
Otay Lakes County Park	Open	Yes	n/a	8 new signs	n/a	160 yds	300 ft	n/a	5 programs	2 acs	5 trees removed
Otay Valley Regional Park	Open	Yes	n/a	n/a	8 mi	n/a	n/a	n/a	1 program	3 acs (end goal)	n/a

Appendix 13 Stewardship/Management Completed on County Lands in 2016 (continued)

Preserve	Status	Rsrch	Invas. Spec. Control + Removal	Signage Install/ Repair + Access Control	Trail Maint. & Repair/ Restoration	Fuel Mgmt	Fencing Install/ Repair	New Wildlife Drinking Station(s)	Environ. Education	Habitat Restoration	Hazardous Tree Removal
Louis A. Stelzer Park	Open	Yes	400 ft ²	n/a	1 mi	2 mi	n/a	n/a	>350 programs	53 1-gal. size oak trees, 1000 acorns	4 large oak trees (GSOB)
Stoneridge Preserve	Closed	Yes	0.25 acs	4 signs	n/a	2 acs	n/a	n/a	n/a	n/a	n/a
Sweetwater Regional Park	Open	Yes	n/a	n/a	2 mi	5 acs	Lodge pole + wire fencing installed	n/a	40 hrs	0.45 acs to be planted	Pruning only
Sycamore Canyon/Goodan Ranch Preserve	Open	Yes	1.1 acs	17 new signs	2.79 mi	n/a	200 ft	2 new installed; 15 total	50 hrs	0.36 acs	n/a
Tijuana River Valley Regional Park	Open	Yes	3 acs	n/a	22.5 mi	Y; acs unknown	2 new wire fences	n/a	50 hrs	30 acs, ongoing	97 trees removed

Appendix 14 Private Mitigation Lands

RMP Number	Project Name	APNs	Final RMP Date	Habitat Manager	Annual Report Due	Habitat Conservation Area Description	Project graded / built?	Monitoring / Maintenance Status
98-001	Bernardo Lakes	678-070-31, 678-420-26, 27, 678-421-01, 678-422-01,02,04, 678-430-25, 35, 678-432-01	February 1998	None.	yearly	A total of 111.8 acres of open space is dedicated with 71.8 acres of the 111.8 previously conveyed. The open space is located west of the current western termini of Rancho Bernardo Road, immediately north of Artesian Road and wets of Four Gee Road. The property consists mostly of coastal sage scrub with some freshwater marsh, southern willow scrub, and non-native grassland.	yes	Former TET property. Per Open Space Maintenance Agreement, HOA responsible to find replacement HM. Enforcement is under discussion.
99-001	4S Ranch, Ralphs Family Preserve	678-030-07, 678-031-01	Sep-99	Joaquin Meza	July	Approximately 1,065 acres immediately south of Lake Hodges, including coastal sage scrub, southern mixed chaparral, native and non-native grassland.	yes	2016 annual report has not yet been received - delinquent. 2015 annual report noted no major concerns. Staff following up with Land Manager to submit timely reports.
99-002-01 and 99-002-02	4S Ranch	Lusardi Creek Portion (south) 312-284-01, 312-285-01, 312-150-04 Artesian Creek Portion (mid) 678-670-21, 678-671-03 North 678-050-49, 678-030-08, 678-050-51	Sep-99	Kyle Matthews Habitat Restoration Sciences, Inc. 4901 El Camino Real, Suite D, Carlsbad, CA, 92008	July	A total of approximately 547 acres of open space is located on this property. 312 acres are located in the northern portion of the project, adjacent to the Ralph's Family Reserve, and 230 acres is located in the southerly portion of the site within La Jolla Valley, surrounding the Lusardi Creek riparian corridor.	yes	2016 annual report has not yet been received - delinquent. 2015 annual report noted no major concerns. Staff following up with Land Manager to submit timely reports.

Appendix 14 Private Mitigation Lands (continued)

RMP Number	Project Name	APNs	Final RMP Date	Habitat Manager	Annual Report Due	Habitat Conservation Area Description	Project graded / built?	Monitoring / Maintenance Status
99-003	Salviati-Golem "East Gorge"	678-020-02, 03, 678-021-02, 03, 265-320-03	Jan-00	San Dieguito River Valley Joint Powers Authority	April	154 acres of open space was set aside to preserve California adolphia, southwestern spiny rush, San Diego marsh elder, Del Mar manzanita, wart-stemmed ceanothus, California gnatcatcher, southern California rufous-crowned sparrow, coastal western whiptail, and mountain lion.	yes	2014-2015 annual report has not yet been submitted. The HOA stopped its payment, resulting in a County Counsel demand letter on September 10, 2014. The County has met with the HOA and JPA and will continue until the issue is resolved. Lack of annual monitoring reports still being pursued.
99-004	Starwood-Crosby at Rancho Santa Fe	265-320-18, 21, 22, 24, 18, 265-291-21, 25, 27, 265-290-41, 43, 267-050-42, 44, 46	6/28/2004	Rincon Consultants	May	The open space is equivalent to approximately 170 acres, located in the north-central San Diego County, along the San Dieguito River corridor south of Del Dios Highway at Bing Crosby Boulevard. 14 sensitive plant species and 12 sensitive wildlife species were observed onsite: California adolphia, San Diego mesa mint, San Diego button celery, spreading navarretia, Orcutt's brodiaea, San Diego ambrosia, Del Mar manzanita, Nuttall's scrub oak, San Diego barrel cactus, San Diego marsh elder, San Diego sagewort, southwestern spiny rush, summer holly, wart-stemmed ceanothus, San Diego fairy shrimp, orange-throated whiptail, Bell's sage sparrow, California horned lark, California gnatcatcher, Cooper's hawk, great blue heron, loggerhead shrike, northern harrier, southern California rufous-crowned sparrow, white-tailed kite, and San Diego black-tailed jackrabbit.	yes	Annual reports due March 1 st . Report for 2016 not yet submitted.
99-005	Woodridge	395-151-70, 395-151-69, 395-432-30, 395-432-31	6/2005 (to be updated in 2010)	Center For Natural Lands Management	December	Located south of Pino Drive and west of Lakeview Drive in Lakeside, about 1/2 mile west of Lake Jennings. The site has approximately 55 acres of Diegan coastal sage scrub and native grasslands, and a small patch of eucalyptus woodland, and supports the federally-listed threatened coastal California gnatcatcher. The Center for Natural Lands Management received title to the property in the December of 1999 at which time the Woodridge habitat conservation areas management commenced. The County of San Diego holds an Open Space Easement on the conservation area.	yes	2014 annual report was submitted, 2015 and 2016 reports are delinquent. Staff following up with Land Manager to submit timely reports.

Appendix 14 Private Mitigation Lands (continued)

RMP Number	Project Name	APNs	Final RMP Date	Habitat Manager	Annual Report Due	Habitat Conservation Area Description	Project graded / built?	Monitoring / Maintenance Status
01-001	Blossom Valley	390-061-03, 390-061-04	1/2007 (updated in 2012)	Center For Natural Lands Management	December	The 286-acre habitat conservation area was dedicated in fee to the Center for Natural Lands Management in July 2009 as off-site mitigation for the Blossom Valley Estates development. The site is located in Blossom Valley, about 2 miles east of Lake Jennings. The site supports Diegan coastal sage scrub, southern mixed chaparral, and coast live oak woodland that all burned completely during the Cedar Fire in 2003. The site's terrain is very steep and rugged.	yes	2014 annual report was submitted, 2015 and 2016 reports are delinquent. Staff following up with Land Manager to submit timely reports.
02-001	Santa Fe Valley McCrink Ranch	267-060-40, 45, 265-320-11, 13, 19, 20, 23, 25	1/10/2003	Helix aka San Diego Conservancy	N/A	This 270-acre preserve area is located in west-central San Diego County, approximately 5 miles east of Interstate 5 and 3 miles west of Interstate 15, south of Del Dios Highway. The site primarily supports coastal sage scrub and southern mixed chaparral.	yes	County owned open space formerly managed by TET. Annual Report was not received. Enforcement under discussion.
02-003	Maranatha Chapel	267-060-37	10/30/2002		Due in conjunction with sensitive plant surveys.	The project is located at the western terminus of Rancho Bernardo Road, between Artesian Road and Del Dios Highway. Approximately 117 acres of open space is located on a rectangular parcel. Nearly half of the property is Diegan coastal sage scrub habitat (65.98 acres), with the remaining habitat as non-native grassland (27.32 acres), chaparral (8.81 acres), oak woodland (1.5 acres), freshwater marsh (0.99-acre), eucalyptus woodland, disturbed (roads), and developed land.	yes	Annual report has not been submitted. Non-compliance letter was sent (March 2012, re-sent in 2013). Enforcement under discussion.
03-001	Onyx Ridge	264-680-11	Nov-05	Escondido Creek Conservancy	Annual reports will begin once the 9 lots are graded; due in February for previous calendar year.	The project is located within the Rancho Cielo Specific Plan, located approximately two miles north of Del Dios Highway and one-half mile south of Harmony Grove Road. A total of 71.5 acres of open space is located on the Onyx Ridge Property. Habitats include black sage dominated sage scrub, oak woodland, and riparian.	no	Formal reporting has not started because grading has not commenced. Status is good per email from TECC.

Appendix 14 Private Mitigation Lands (continued)

RMP Number	Project Name	APNs	Final RMP Date	Habitat Manager	Annual Report Due	Habitat Conservation Area Description	Project graded / built?	Monitoring / Maintenance Status
03-002	El Apajo	268-360-15	Jun-03		Due for each calendar year	This 25.6-acre open space area was conserved for annual grassland and wetlands. It is located within the San Dieguito River Valley along Via de Santa Fe Road northwest of its junction with El Apajo Road.	yes	Project does not have a maintenance agreement. Annual reports have not been submitted. Enforcement is under discussion.
05-004	Greenhills Ranch	395-452-01	Sep-06	Habitat Restoration Sciences	January	The 44.04 acre open space is located south of Lake Jennings Road and west of Interstate 8. Observed on the property were California gnatcatcher, southern California rufous-crowned sparrow, silvery legless lizard, Coronado skink, western spadefoot, black-tailed jackrabbit, mule deer, turkey vulture, Bewick's wren, San Diego sunflower, prostrate spineflower, and ashy spike-moss.	In process	An annual report is due January 31 of each year, the report for 2016 has yet to be received. The 2015 report was submitted in compliance with the RMP and included the Second Annual Report for the Revegetation for the Green Hills Ranch Stockpile.
06-005	Artesian Trail	267-142-33, 34, 35, 36	4/17/2007 RMP to be implemented beginning 6/1/07.	San Dieguito River Park Conservancy, P.O. Box 89, Del Mar, CA 92019	September	The project dedicated approximately 3.2 acres of land into open space in response to a four lot subdivision. The site is located in the Community of Rancho Santa Fe, four miles west of Interstate 15, south of Artesian Road. The property preserves approximately 2.6 acres of non-native grassland and 0.-6-acre of coastal sage scrub. Observed on the property were approximately 688 federally threatened thread-leaf brodiaea (<i>Brodiaea filifolia</i>), and approximately 155 California adolphia (<i>Adolphia californica</i>).	Yes; based on aerial photograph review, pads were graded between 2006 and 2008.	Annual reports have not been submitted. PDS and County Counsel are discussing possible follow-up.
08-001	Bridges - Santa Fe Creek	264-104-13,14, 264-530-01,02,03	PAR 1-28-2011	San Diego Habitat Conservancy	January	112 acres including 85 acres of CSS and 13 acres of riparian woodland with lesser amounts of other associated habitats. This is the first year of monitoring and weed management. Focus gnatcatcher surveys to occur in 2015 and every 3 years. Animals include gnatcatcher, rufous-crowned sparrow, cooper's hawk, yellow warbler, red-tailed hawk nest, coastal rosy boa, mule deer, and mountain lion. Plants include sticky dudleya, adolphia, sagewort, summer holly, wart-stem lilac, marsh -elder, spiny rush, sea-dahlia, goldenstar, engelman oak and ashy spike-moss.	yes	An annual report is due January 31 of each year, the report for 2016 has yet to be received. The 2015 report was submitted in compliance with the RMP and without concerns raised by PDS staff.

Appendix 14 Private Mitigation Lands (continued)

RMP Number	Project Name	APNs	Final RMP Date	Habitat Manager	Annual Report Due	Habitat Conservation Area Description	Project graded / built?	Monitoring / Maintenance Status
10-002	Rancho Santa Fe	268-080-20,21, 268-100-39,40	13-May-10	Whalen and Assoc.1660 Hotel Circle N., Suite 725 San Diego, CA 92108-2820	February	Rambla de las Flores and El Acebo - removal of eucalyptus woodland, preserve of southern maritime chaparral. 24.5 acres total.	In process	2014 annual report was reviewed and accepted in March 2015. The Querencia open space vacation was approved by the Board on October 22, 2014 to vacate 0.97 acre of the open space easement, with off-site mitigation. 2015 and 2016 (due 2/2017) reports have not been received.
10-003	East Otay Mesa (EOM) aka Rancho Vista del Mar	Por 648-01-02, 03, 648-040-31, 49, 55 and 648-050-20	2/1/2012	Open Space Management, Inc.	January	92 acres located on the west and east sides of Alta Road north of Calzada de la Fuente in East Otay Mesa. Habitats are coastal sage scrub, chaparral, and non-native grassland. Supports burrowing owls, barrel cactus, Matilija poppy, and San Diego sunflower.	yes	The Open Space Maintenance (OSM) Agreement was signed on February 13, 2012. 2015 and 2016 (due 1/31/2017) reports have not been received.
11-001	Martz Ramona Rancho las Pampas	277-050-32, 277-121-05, 277-111-09, and 277-121-08	Approved through CDFW - 2013	Barry Jones	Unknown	Twelve (12) vegetation communities/habitats occur within the 210.6 acre property: vernal pools, a basin with San Diego fairy shrimp, southern willow scrub, mule fat scrub, freshwater seep, disturbed wetland, Diegan coastal sage scrub (including disturbed), non-native grassland, eucalyptus woodland, agriculture, disturbed habitat, and developed. Listed species on-site are San Diego fairy shrimp, arroyo toad, and Stephens' kangaroo rat.	N/A; private mitigation bank	The site received USFWS approval to be amended into the South County Subarea Plan in November 2012. The owner has received USFWS approval as a mitigation bank.
11-002	Lonestar	646-030-21-00, 646-070-36-00, 646-070-37-00	PAR 12-9-2011	San Diego Habitat Conservancy	January	Non-native grassland and CSS in East Otay Mesa. The Preserve provides habitat for several sensitive animal species, including the California gnatcatcher, Coronado skink burrowing owl, and white-tailed kite. CAL FIRE has not been able to perform controlled burns, so a mowing and dethatching program has begun.	yes - offsite parcel dedicated for mitigation	An annual report is due January 31 of each year, the report for 2016 has yet to be received. While an annual report was submitted for 2015, the RMP has not been finalized.
12-002	Sloane Canyon	521-080-11	11/14/13	Open Space Management, Inc.	February	The Sloane Canyon open space comprises 39.3 acres on Sloane Canyon Road in Jamul. It includes 4.72 acres of riparian woodland, 6.0 acres of Diegan coastal sage scrub, 9.71 acres of Diegan coastal sage scrub/chaparral, 17.2 acres of southern mixed chaparral, and 1.67 acres of disturbed habitat.	Yes	The final RMP was approved on November 14, 2013 and the funds were wired to SDRPF on 2/28/14. 2014 annual report was reviewed in March 2015. 2015 and 2016 (due 2/2017) reports have not been received.

Appendix 14 Private Mitigation Lands (continued)

RMP Number	Project Name	APNs	Final RMP Date	Habitat Manager	Annual Report Due	Habitat Conservation Area Description	Project graded / built?	Monitoring / Maintenance Status
12-003	Trevi Hills/ High Meadow Ranch	POR 389-020-08, 389-071-17, 389-072-03, 389-092-15, 16, 389-101-01, 02, 03, 389-102-01, 02	2/21/2013	Open Space Management, Inc.	January	The Trevi Hills/ High Meadow Ranch open space comprises approximately 350 acres off Muth Valley Road and High Meadow Road. The open space provides for the long-term conservation of intact southern mixed chaparral habitat and the Lakeside ceanothus or Lakeside wild lilac (<i>Ceanothus cyaneus</i>).	In process	An annual report is due January 31 of each year, the report for 2016 has yet to be received. The 2015 report was submitted in compliance with the RMP but some areas of the report were deficient. The land manager was requested by PDS staff clarify self-reported 'budgetary constraints', greater coordination and documentation thereof for site stakeholders, maintenance of approved access routes, future budget projections, and a map of observed sensitive species found on-site.