



Santa Maria Creek Trail Conceptual photo

SANTA MARIA CREEK GREENWAY TRAIL

Connecting the
Central Ramona Community
to the Ramona Grasslands
Open Space Preserve

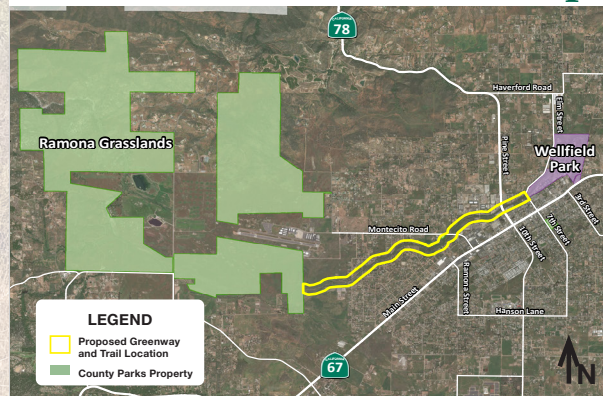
Your Part to Play

The County is working to secure property easements along the creek, to turn this vision into reality. Once enough parcels have been secured, the County will complete environmental studies, review corridor alignment and prepare a map and action plan for trail development.

The first segment is being built with support from the Ramona Intergenerational Community Center. Further growth will require participation from Ramona's creek-side landowners and other residents, the Ramona Chamber of Commerce, the Ramona Trails Association, law enforcement and other stakeholders.

Join the cause! Interested volunteers and land owners should contact Greenway Trail Committee Member John Degenfelder at 760-789-1716 or DPR Trails Program Coordinator Lizzy Bendrick at trails@sdcounty.ca.gov.

Santa Maria Creek Area Map



LEGEND

- Proposed Greenway and Trail Location
- County Parks Property

INFORMATION



COUNTY OF SAN DIEGO
Department of Parks and Recreation
5500 Overland Ave., Suite 410
San Diego, CA 92123



Reservations & Information
(877) 565-3600 • (858) 565-3600

Visit us at sdparks.org



Connect with us on Facebook

County Parks and Recreation
[facebook.com/CountyofSanDiegoParksandRecreation](https://www.facebook.com/CountyofSanDiegoParksandRecreation)

Greenway Trail Committee
[facebook.com/Santa-Maria-Creek-Greenway-105823717865311](https://www.facebook.com/Santa-Maria-Creek-Greenway-105823717865311)



sdparks.org

Santa Maria Creek Greenway Trail



Vision

The Santa Maria Creek Greenway will link those in town with a safe, scenic, off-street, partially ADA-accessible trail from their homes to shopping, dining, parks and preserves, and resources like the Library and Community Center.

About the Project

Citizens have joined the County of San Diego Department of Parks and Recreation (DPR) on a project to acquire land along Santa Maria Creek. The project is one of many designed to enhance recreation opportunities while protecting land and local wildlife in the unincorporated community of Ramona.

Featuring a 3-mile multi-use trail system for hikers, mountain bikers and equestrians, the public access plan would take advantage of an existing staging area on Montecito Road, and would link to other trails connecting to Wellfield Park, the Ramona Grasslands and the Ramona downtown business district – enhancing regional connectivity and supporting safety and regular upkeep via DPR and volunteer patrols.

A continuous, non-motorized and multi-use trail would provide the community with new opportunities for exercise, bird-watching and spending quality time in nature. Additionally, safety personnel will have better access to the area in emergency situations, and agencies would be able to host more thorough creek cleanup events which will reduce flood risk and hazards.

Considerations for the Creek

Starting high up in the San Dieguito watershed, Santa Maria Creek makes its way across the Ramona Valley on its journey to the San Dieguito River in San Pasqual Valley. The greenery that thrives along this waterway is home to healthy vegetation and scores of wildlife species



Over time, small makeshift trails have allowed visitors by foot, bike and horseback to explore some areas around the creek. The Santa Maria Creek Greenway Trail plan formalizes this trail system in an effort to clean up existing trails, direct traffic, enhance safety measures and protect sensitive habitats.