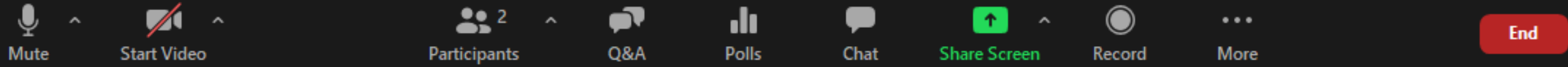




Sage Hill Open Space Preserve

Sage Hill Staging Area and Trails Public Meeting | Oct. 12, 2021

ZOOM



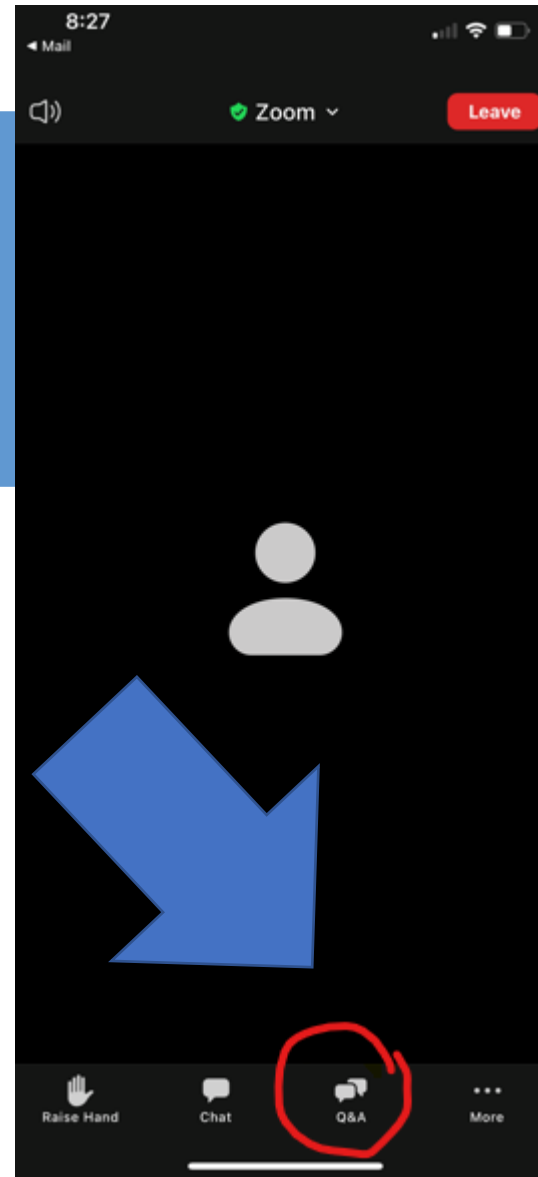
- All participants are muted.
- If you have a question or comment, please use the Q&A feature.
- If you're experiencing audio problems, please call the provided number to join:

Phone: 1-720-707-2699

Webinar ID: 844 6073 8777



HOW TO PARTICIPATE ON A MOBILE DEVICE:



WHO'S SPEAKING?



Jen Sabo Spencer
Park Project Manager



Deborah Mosley
Chief, Resource Management



David Norgard
Chief, Development

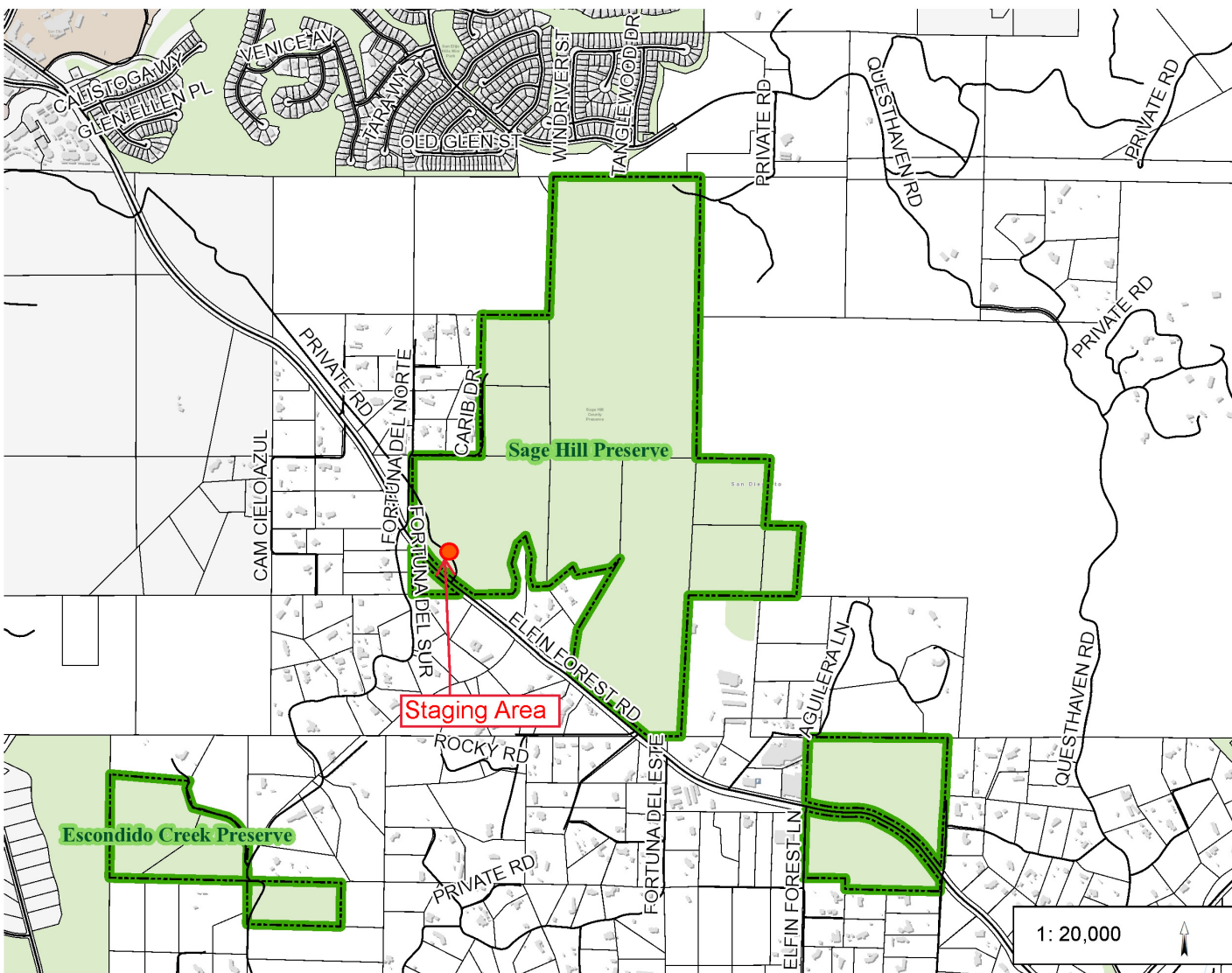


Brandon Schroeder,
Region Manager, Operations



Jessica Geiszler
Marketing and Public
Outreach Manager





- Located in an unincorporated area near Escondido Creek
- Approximately 232 acres
- Acquired by County in 2008
- Approved Resource Management Plan

Sage Hill Open Space Preserve Property Information





- Located within the Draft North County Multiple Species Conservation Program (MSCP)
- County biological surveys and regional species surveys
- Preserve supports a variety of natural resources



- Open hours:
 - sunrise to sunset
 - gates open at 8 a.m.

Park staff responsibilities:

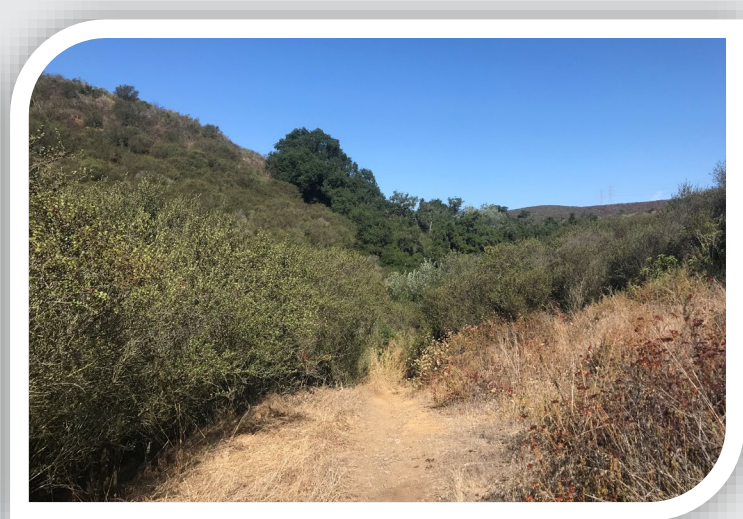
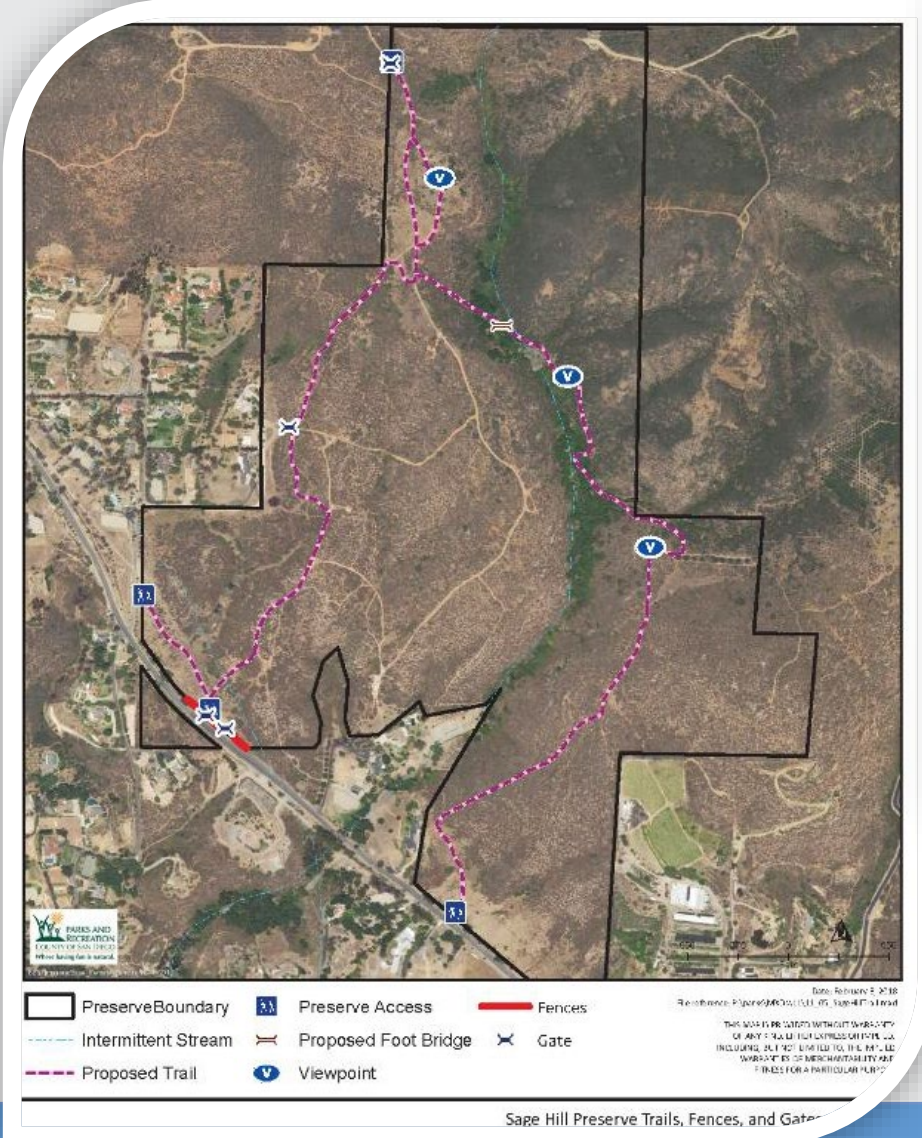
- Opening/closing gates
- Removing trash
- Maintenance of trails/fencing/vegetation
- Leading interpretive hikes or other educational activities
- Regular patrols
- Ongoing communication with residents, park visitors, law enforcement and other emergency responders



- Park staff patrol the park regularly
- Staff enforce regulations, calling upon law enforcement when necessary
- Ongoing challenges: Off-roading activity, smoking, dogs off-leash
- Concerns are communicated to DPR and/or the County Sheriff Department

Sage Hill Open Space Preserve Operations





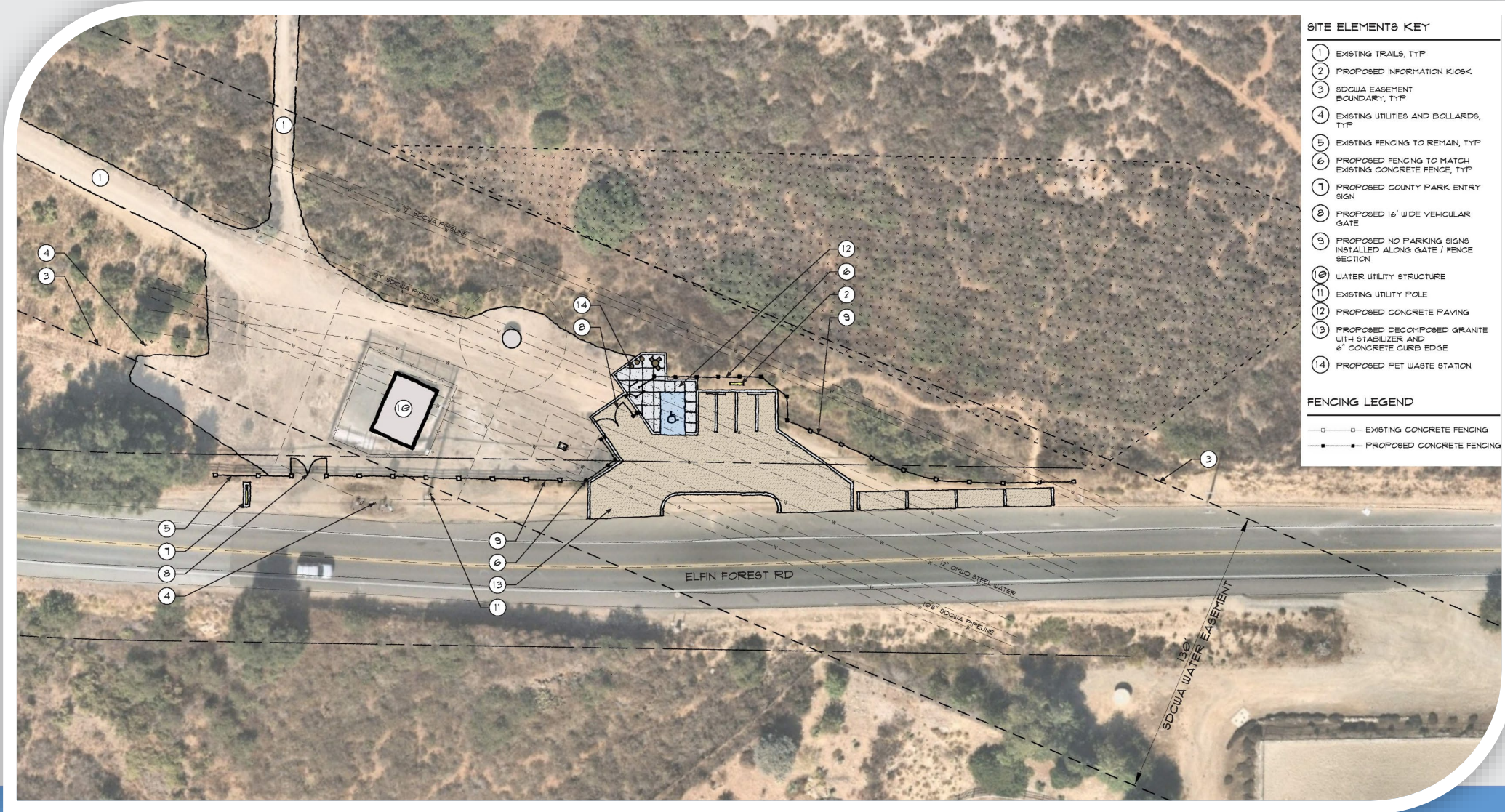
- Approved trail plan
- Public Access to the Preserve

Sage Hill Open Space Preserve Site



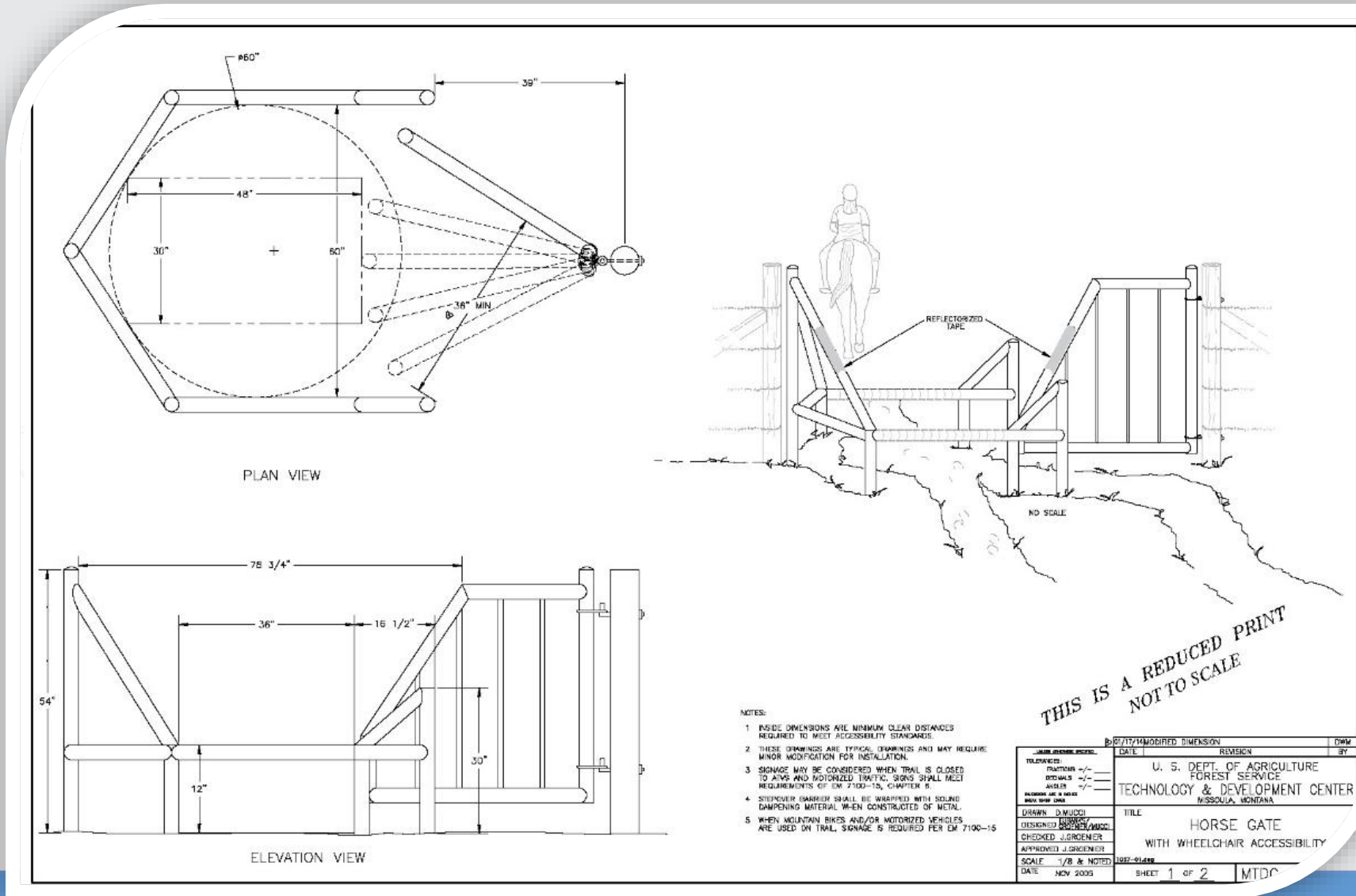


- Phase 1
 - Habitat restoration
 - Maintenance of existing trail system
 - 2 miles of multi-use trails
- Phase 2
 - Construction of staging area, adding a bridge and parking for 9 vehicles (with ADA)



Sage Hill Open Space Preserve Staging Area





Sage Hill Open Space Preserve Pedestrian /Horse Gate





- Install a speed feedback sign
- Trim the trees on the east side of Elfin Forest Road, north of the driveway, for better visibility
- Provide 9 parking spaces

Sage Hill Open Space Preserve
Traffic Safety





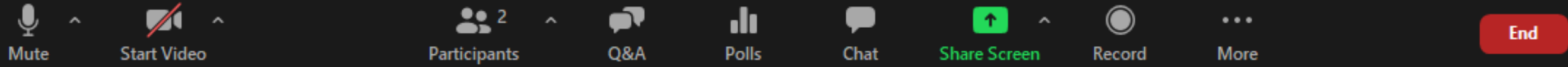
● Project qualifies for the following CEQA Exemptions:

- 15301: Existing Facilities
- 15303: New Construction
- 15304: Minor Alterations to Land
- 15311: Accessory Structures
- 15333: Habitat Restoration

Sage Hill Open Space Preserve
California Environmental Quality Act (CEQA)



ZOOM



- All participants are muted.
- If you have a question or comment, please use the Q&A feature.
- If you're experiencing audio problems, please call the provided number to join:

Phone: 1-720-707-2699

Webinar ID: 844 6073 8777



THANK YOU!

QUESTIONS?

JEN SABO SPENCER, PLA, LEED AP (she/her)

Park Project Manager | Department of Parks and Recreation, Development
County of San Diego | 5500 Overland Avenue, Suite 410 | San Diego, CA 92123
C: 858.776.8399 | jen.spencer@sdcounty.ca.gov

DEVELOPMENT PROJECT WEBPAGE

sdparks.org > Plans > Development Plans

