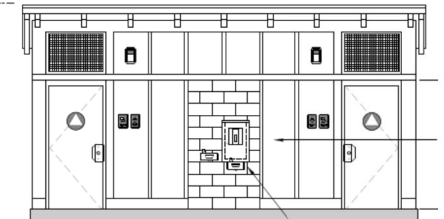
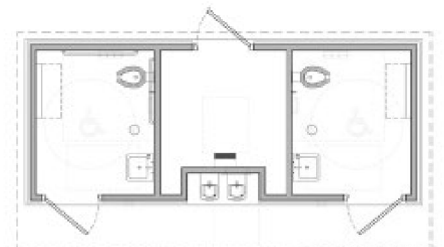


SWEETWATER BIKE PARK RESTROOM – CONCEPT PLAN

Project adds 185SF prefabricated building on slab with two ADA accessible restrooms and drinking fountain with bottle filler. Restrooms and drinking fountain accessed via entry plaza. Storage space between restrooms is accessed from rear of building.



ELEVATION 1
SCALE: 3/16"=1'-0"
DRINKING FOUNTAIN W/ BOTTLE FILLER



FLOOR PLAN

