



# CASA DE ORO PARK AMENITIES

Community Workshop #1

September 30, 2024



**SPURLOCK**  
LANDSCAPE ARCHITECTS



# SETTING THE STAGE

**Objectives:** The objective of today's public meeting is to gather input from the community and the school district on desired amenities, with a priority on the needs for the school.

**Joint Use:** Refers to the collaborative sharing and utilization of facilities, resources, or spaces between multiple entities, such as the county's Parks and Recreation Department and the La Mesa Spring Valley School District, to maximize benefits and efficiency for all parties involved. This includes establishing clear agreements on space allocation, maintenance, scheduling, funding, and usage policies to ensure that the needs of both the school and the community are met effectively.

**Park Amenities:** Are features such as sports field, playgrounds, picnic areas, running track, green spaces, benches, lighting, and fitness equipment.

# ENVIRONMENTAL ANALYSIS



- The project will comply with all applicable environmental regulations including, but not limited to:
  - California Environmental Quality Act (CEQA)
  - Multiple Species Conservation Program (MSCP)
  - Federal and State Endangered Species Acts
- DPR will be considerate of the environment and environmental stewardship throughout the course of the project in alignment with the DPR mission.



# CASA DE ORO LIBRARY / PARK COMMUNITY OUTREACH EFFORT SUMMARY, WINTER, 2023



## Option 1:

Option 1A Park Amenity, such as:  
Gathering space with shaded patio and trail

- Option 1B Park Amenities, such as:
- Amphitheater
  - Gathering space with shaded patio
  - Exercise stations along Multi-Use Trail



## Option 2:

Option 2A Park Amenities, such as:

- Multi-purpose fields/green space for events
- Exercise stations along Multi-Use Trail

- Option 2B Park Amenities, such as:
- Multi-purpose fields
  - Baseball/softball field
  - Gathering space with shaded patio
  - Exercise stations along Multi-Use Trail



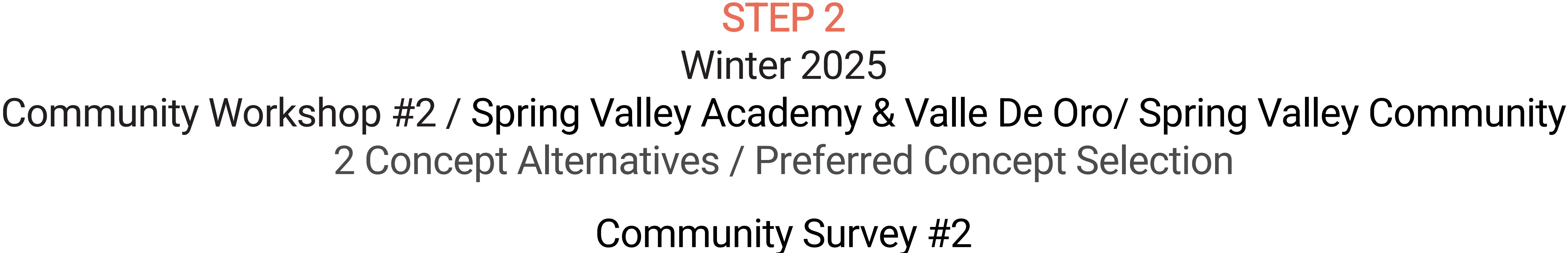
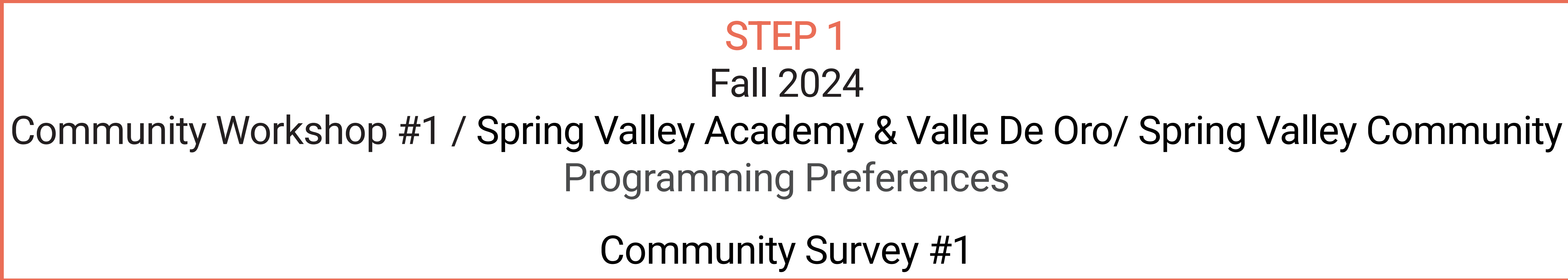
## Option 3:

Option 3A/3B Park Amenities, such as:

- Baseball/softball field
- Multipurpose fields
- Rubberized walking track
- Playground
- Picnic area
- Gathering space with shaded patio
- Amphitheater
- Exercise stations along Multi-Use Trail

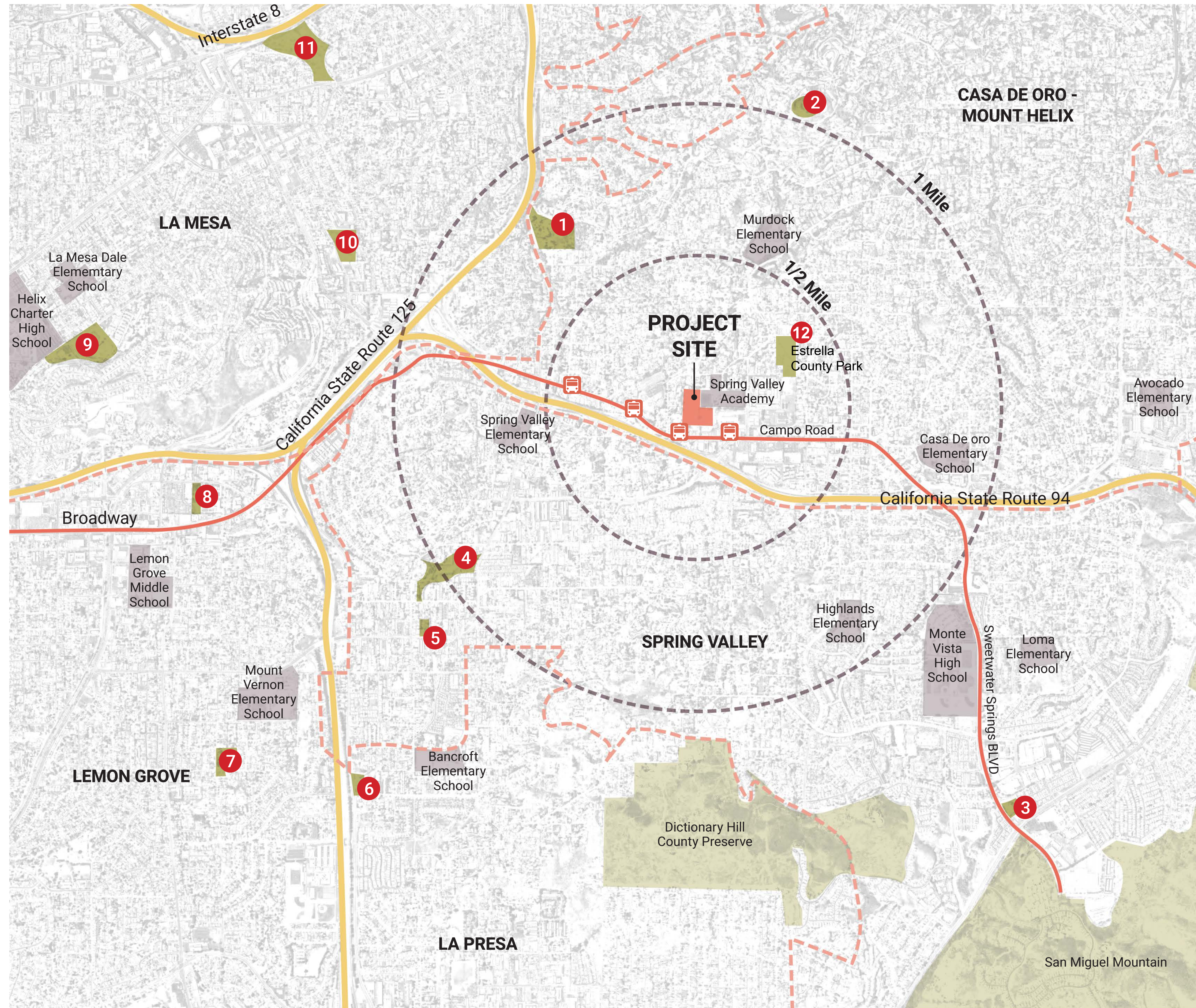


# PUBLIC ENGAGEMENT PROCESS





# REGIONAL CONTEXT



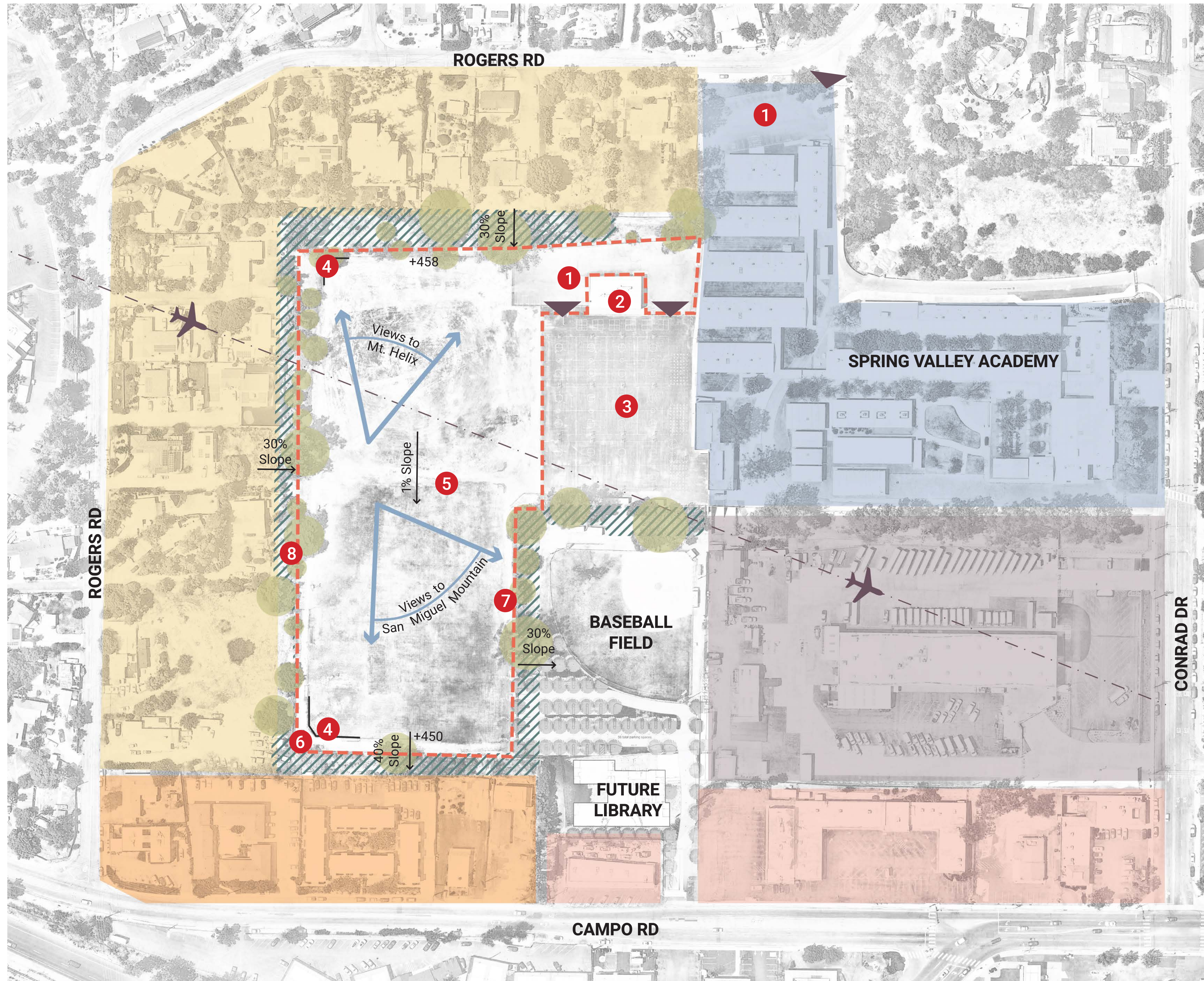
## LEGEND

- Parks
- Open Space
- Schools
- Community Zone
- Highway
- Major Roads
- Bus Stop

- 1 Eucalyptus Park** (6.5 Acres)
  - Comfort Station
  - Picnic Areas
  - Playgrounds
  - Totlot
  - Multipurpose Grassy Field
  - BBQ
  - Covered Pavilion
  - Horeshoe Pits
- 2 Mt. Helix Park** (3.4 Acres)
  - Open Space
  - Amphitheater Seating
- 3 Sweetwater Place County Park** (2 Acres)
  - Comfort Station
  - Picnic Areas
  - Playgrounds
  - Fitness Stations
  - Amphitheater
- 4 Lamar County Park** (9 Acres)
  - Comfort Station
  - Picnic Areas
  - Playgrounds
  - Multipurpose Grassy Lawn
  - Off-leash Dog Park
- 5 Goodland Acres County Park** (1.3 Acres)
  - Basketball Court
  - Comfort Station
  - Picnic Areas
  - Playground
  - Multipurpose Grassy Lawn
- 6 Ildica County Park** (0.55 Acres)
  - Community Park
  - Picnic Areas
  - Playground
  - Fitness Equipment
  - Community Garden
- 7 Lemon Grove Park** (4.5 Acres)
  - Playground
  - Fitness Equipment
  - Multipurpose Grassy Field
  - Comfort Station
  - Picnic Areas
- 8 Kunkel Park** (2 Acres)
  - Playground
  - Basketball Court
  - Multipurpose Grassy Field
- 9 Highwood Park** (8 Acres)
  - BBQ
  - Comfort Stations
  - Picnic Areas
  - Tot Lot
  - Basketball, Pickleball and Tennis Courts
- 10 Collier Park** (7.7 Acres)
  - Tennis & Pickleball Court
  - Playground and Fitness Equipment
  - Picnic Area
  - Nature Trail
  - Comfort Stations
- 11 Macarthur Park** (22 Acres)
  - BBQ
  - Picnic Areas
  - Recreation Center
  - Comfort Stations
  - Tot Lot
  - Community Center Banquet Facilities
  - Municipal Pool & Spa
  - Baseball Field
  - Off-Leash Dog Runs
- 12 Estrella County Park** (6.67 Acres)
  - BBQ
  - Picnic Areas
  - Butterfly Canyon
  - Nature Play Area
  - Playground
  - Amphitheater



# EXISTING CONDITIONS



## LEGEND

- 1 Parking
- 2 Building
- 3 Black Top With Basketball Courts
- 4 Backstop
- 5 Multi-purpose lawn
- 6 Storage Container
- 7 Storm Drain Inlet
- 8 Perimeter Fence
- - - Limit of Work
- ▲ Entry Points
- Existing Tree
- - - Existing Path
- ▨ Steep Slope (30%)
- ↗ Views
- - - Flight Path
- Single-Family Residential
- Multi-Family Residential
- Industrial
- Educational
- Commercial

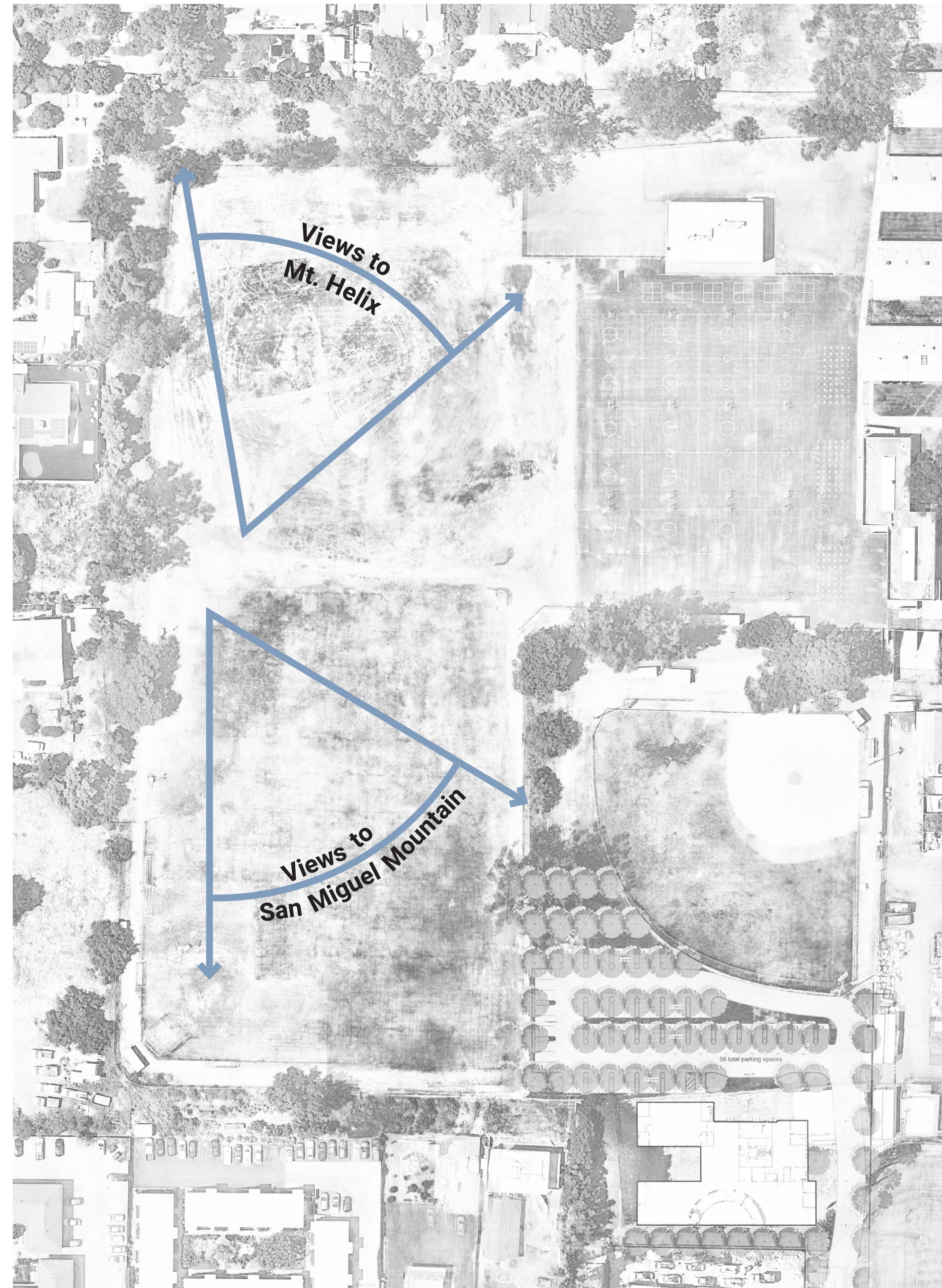




# SITE VIEWS



Views to Mt. Helix



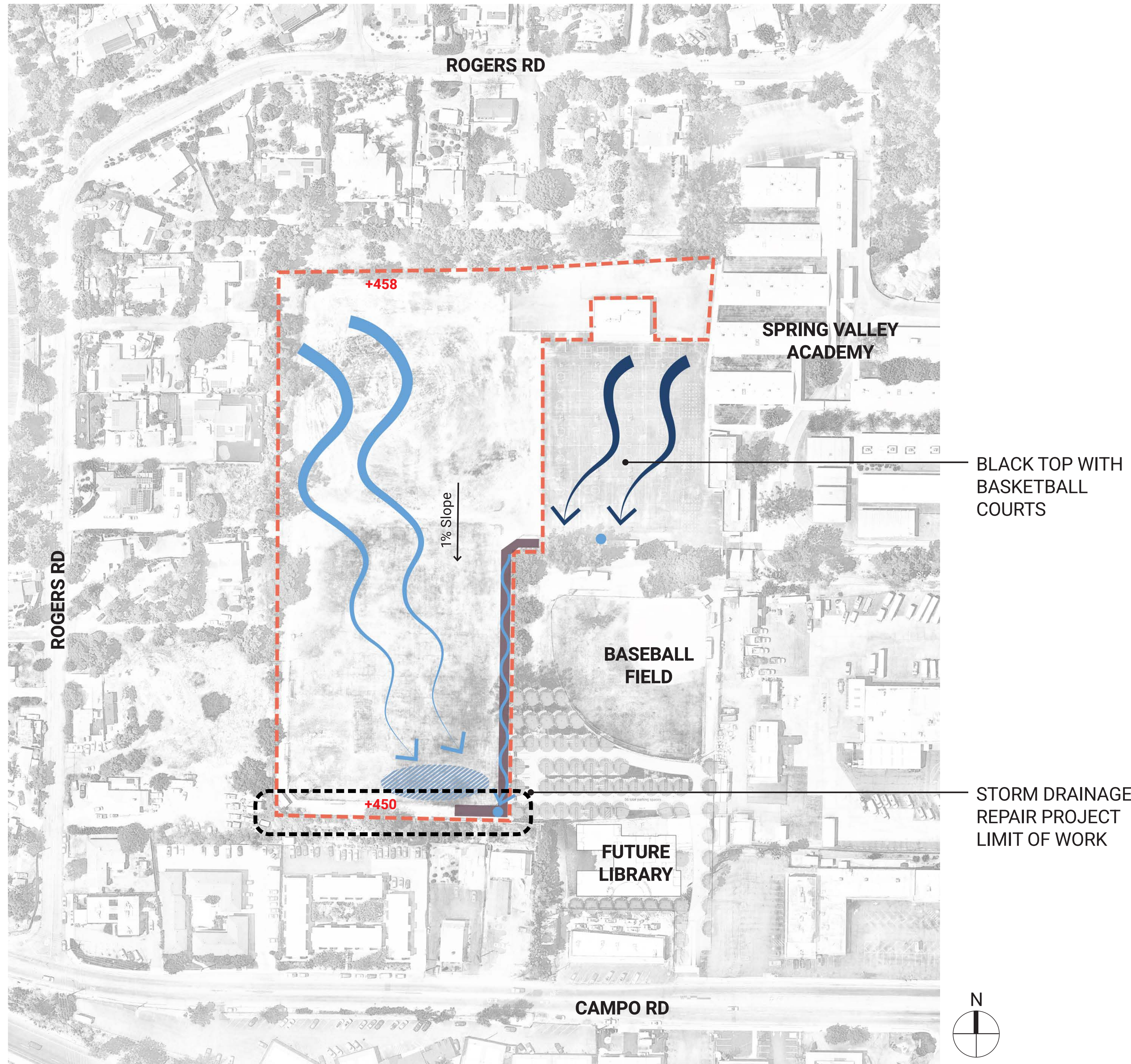
Key Plan









Views to San Miguel Mountain



# STORMWATER APPROACH



## LEGEND

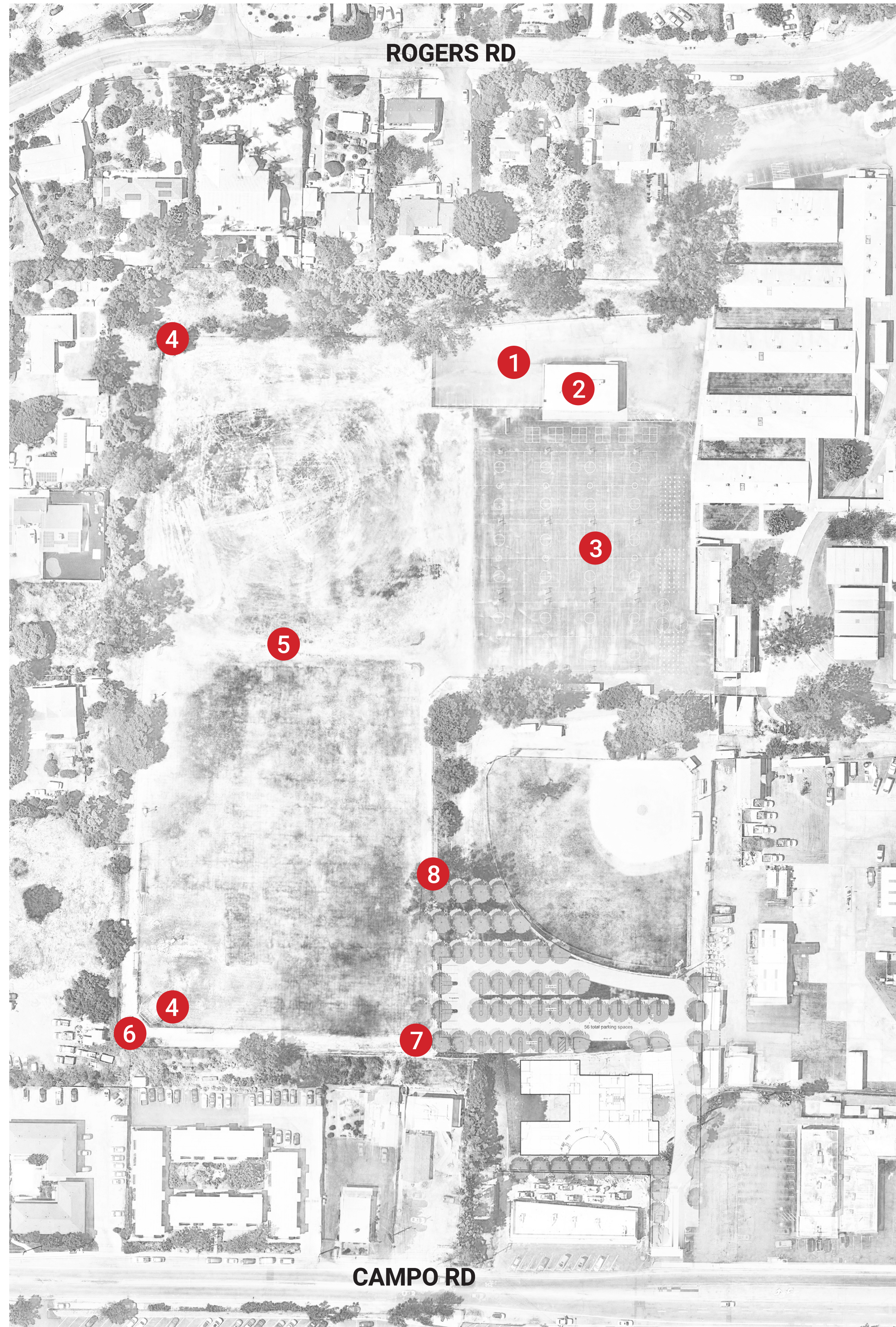
-  Project Limit of Work
-  Potential Stormwater Capture Treatment Basin
-  Run-off Pattern
-  Existing Run-off Pattern (Offsite)
-  Existing Stormwater Inlet
-  Existing V-Ditch

## MITIGATION MEASURES

- Maximize porous pavings to increase point source infiltration and decrease run-off.
- Implement vegetated stormwater basin to capture, treat, and provide slow release of stormwater.
- Add trees and vegetation to reduce pollutants from the project site and help with infiltration.



# SITE PHOTOS



Key Plan



1 - Parking



2 - Building



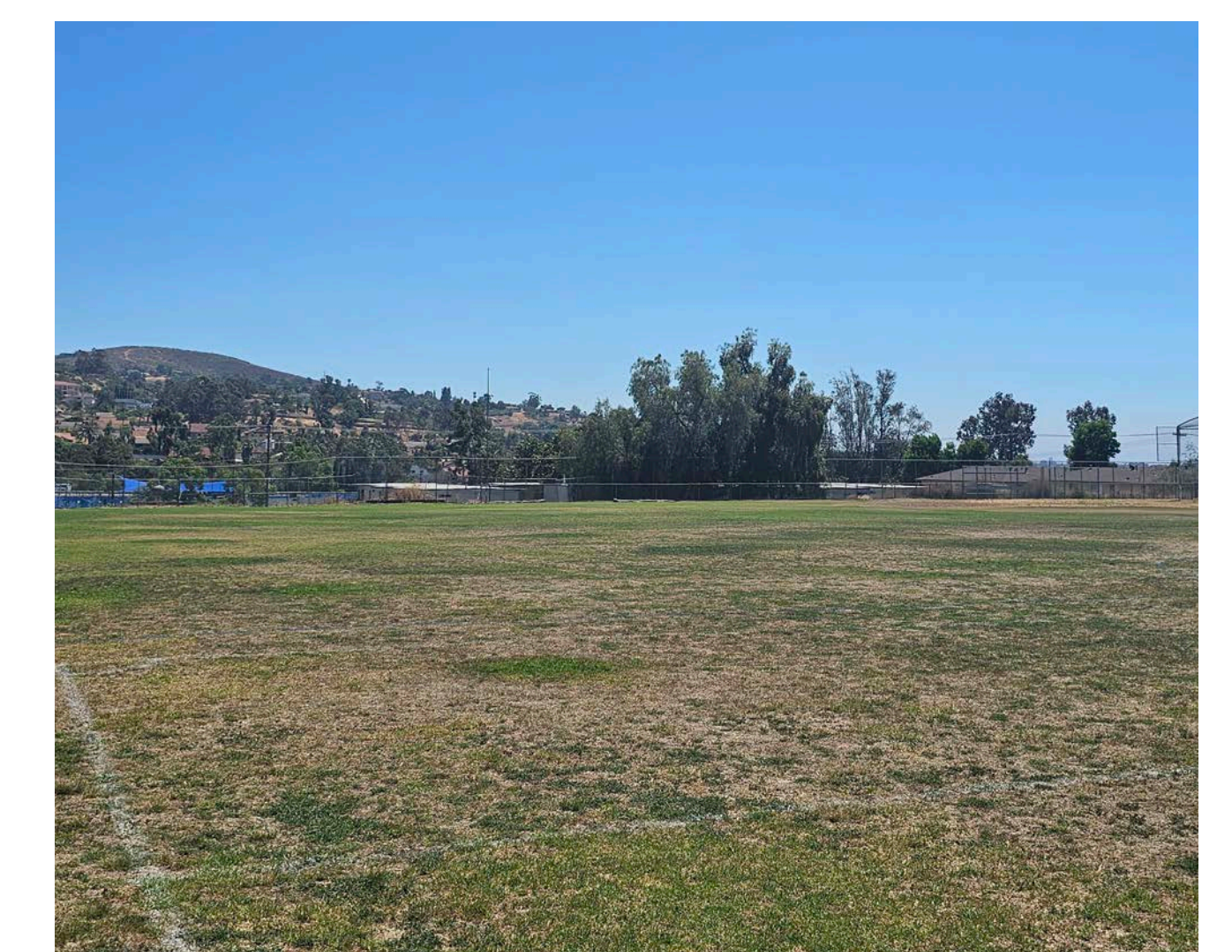
3 - Black Top With Basketball Courts



4 - Backstop



5 - Multi-purpose lawn



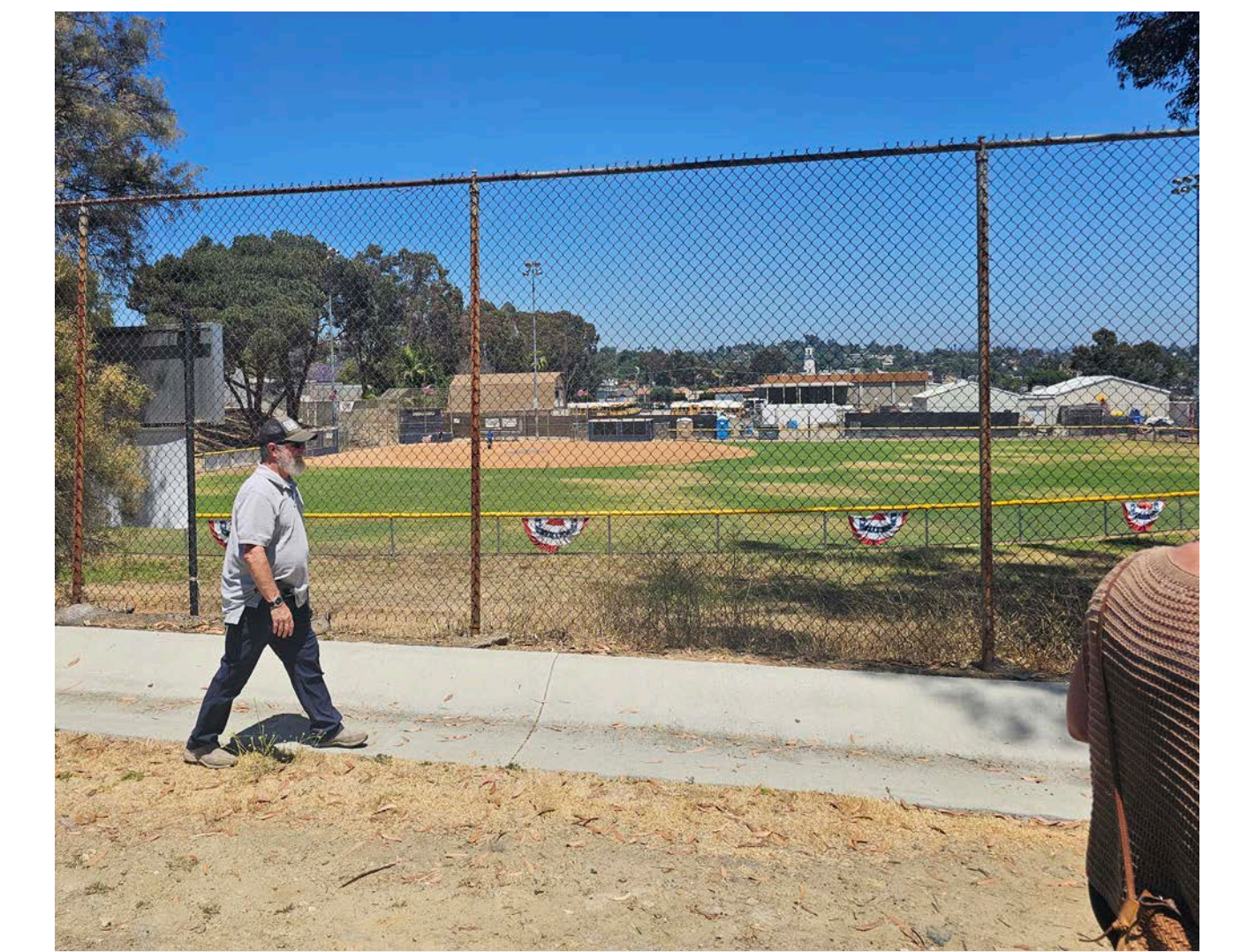
5 - Multi-purpose lawn



6 - Storage Container



7 - Storm Drain Inlet



8 - Perimeter Fence



## WORKSHOP EXERCISES

### Exercise 1: Preferred Park Activity Level

Place (1) dot on the preferred Park Activity Level Spectrum

### Exercise 2: Programming Priorities

Place (7) dots on the preferred Park Amenities

### Exercise 3: Park Character

Place (1) dot on preferred Character

### Virtual Participant's Link:

<https://www.surveymonkey.com/r/CasaDeOroParkWS1>





# PARK ACTIVITY LEVEL

ACTIVE

PASSIVE



Flexible Event Lawn



Outdoor Classroom



Small Gathering Areas



Recreational Soccer Field



Kickball



Picnic Tables



Shaded Promenade



Running Track



Fitness



# PROGRAMMING PRIORITIES



Recreational Soccer Field



Kickball Field



Outdoor Classroom



Flexible Event Lawn



Running Track



Walking Trails



Fitness Stations



Fitness Area



# PROGRAMMING PRIORITIES



Shaded Promenade



Sheltered Area



Picnic Seating



Small Gathering Areas

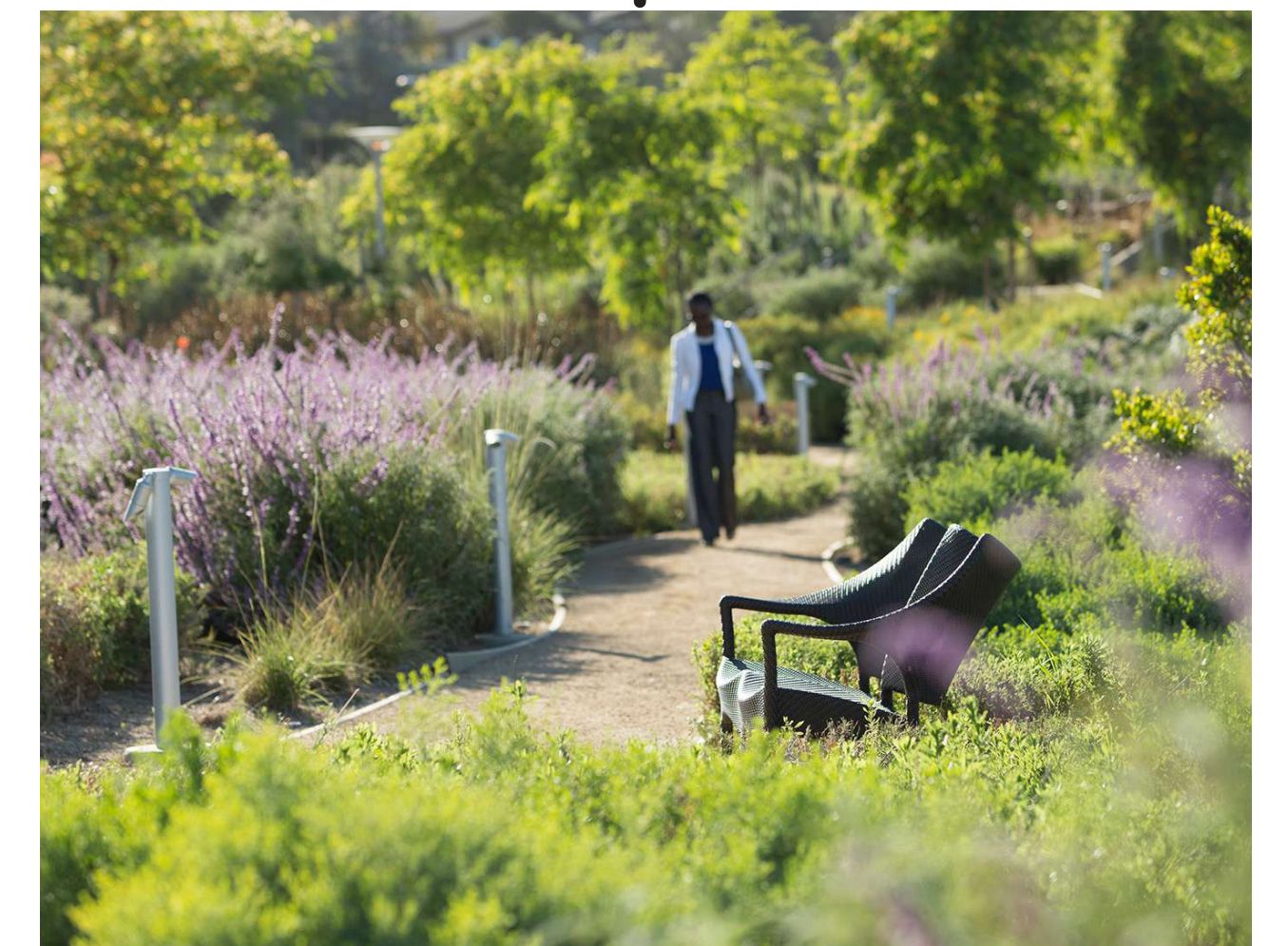
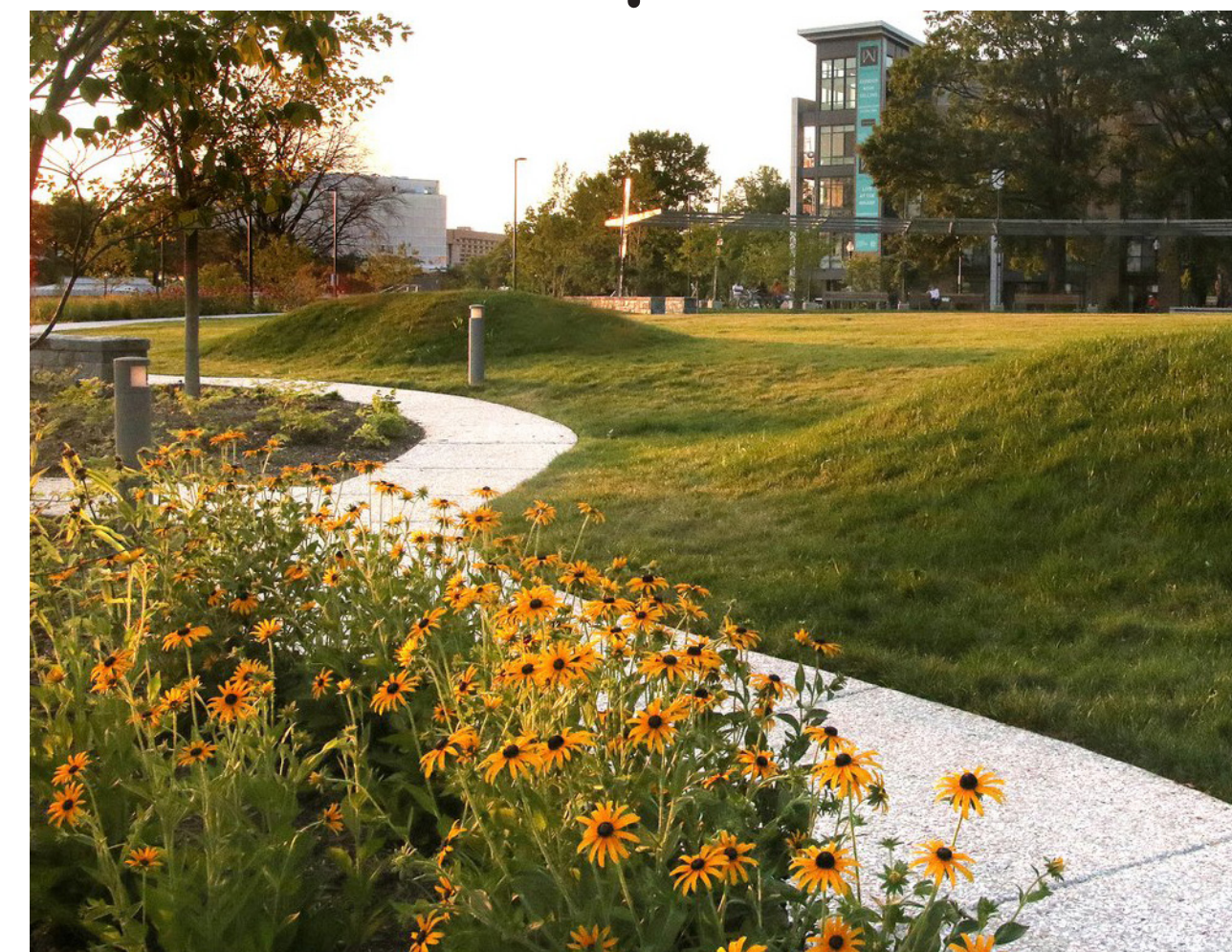
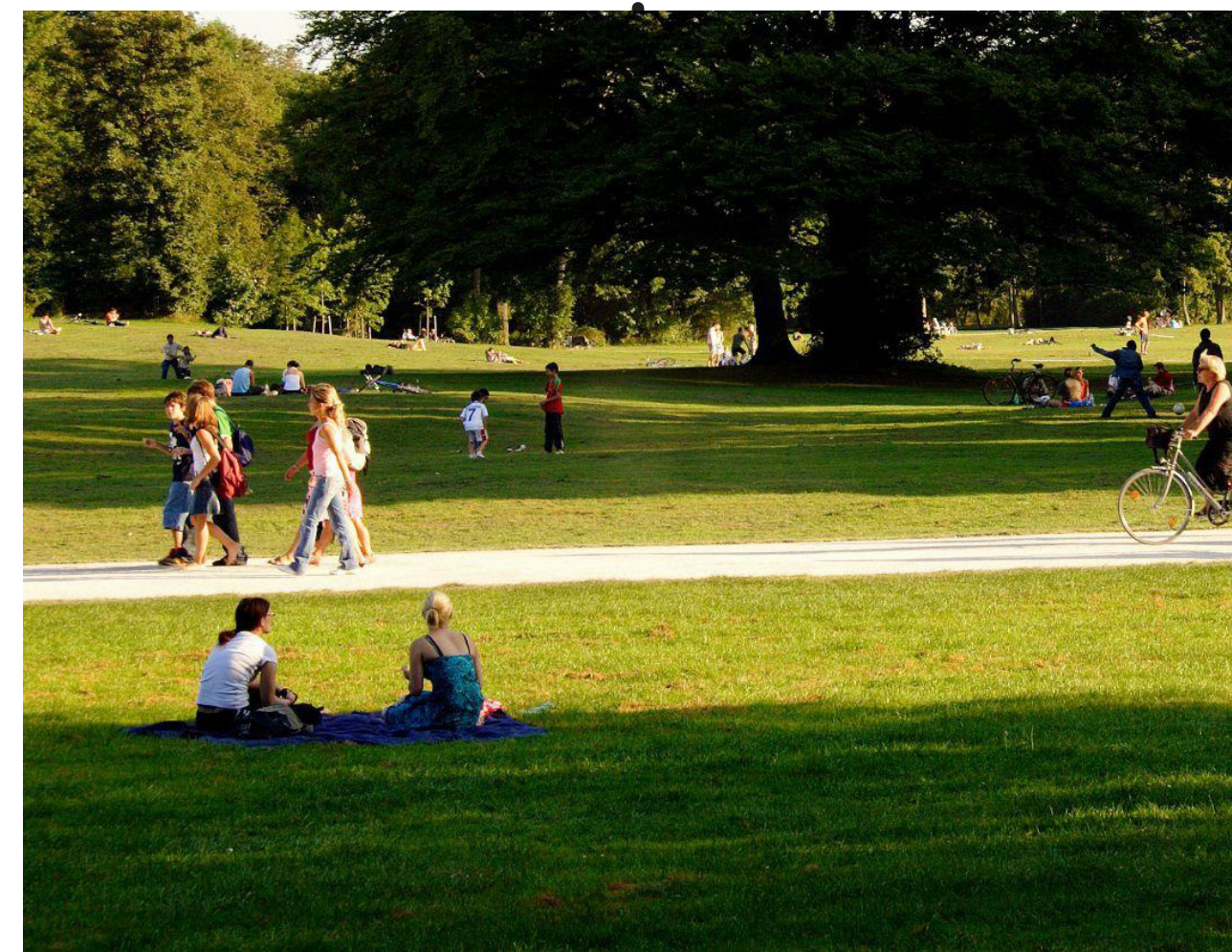
Other, tell us what you'd like to see in your park:



# PARK CHARACTER

## URBAN / CONTEMPORARY

## PASTORAL / GARDEN-LIKE





## WORKSHOP EXERCISES

### Exercise 1: Preferred Park Activity Level

Place (1) dot on the preferred Park Activity Level Spectrum

### Exercise 2: Programming Priorities

Place (7) dots on the preferred Park Amenities

### Exercise 3: Park Character

Place (1) dot on preferred Character

### Virtual Participant's Link:

<https://www.surveymonkey.com/r/CasaDeOroParkWS1>





# QUESTIONS



**Please raise your hand or  
type your questions and comments in the Q&A pane  
and we will answer your questions**



# NEXT STEPS

## STEP 1

Fall 2024

Community Workshop #1 / Spring Valley Academy & Valle De Oro/ Spring Valley Community Programming Preferences

Community Survey #1



## STEP 2

Winter 2025

Community Workshop #2 / Spring Valley Academy & Valle De Oro/ Spring Valley Community 2 Concept Alternatives / Preferred Concept Selection

Community Survey #2



## STEP 3

Spring 2025

Community Workshop #3 / Spring Valley Academy & Valle De Oro/ Spring Valley Community Preferred Concept Plan



## STEP 4

Final Concept Plan



# Thank you!

## CASA DE ORO PARK AMENITIES

Follow this project at  
<https://www.sdparks.org/content/sdparks/en/AboutUs/Plans/ParksImprovementPlan.html#cdo>  
and answer the online survey:



Email questions or send feedback to:

Camille Wildburger  
Park Project Manager  
County of San Diego Department of Parks  
and Recreation  
[CamilleL.Wildburger@sdcounty.ca.gov](mailto:CamilleL.Wildburger@sdcounty.ca.gov)



**S P U R L O C K**  
LANDSCAPE ARCHITECTS