



CASA DE ORO PARK AMENITIES

Community Workshop #2

January 13, 2025



SPURLOCK
LANDSCAPE ARCHITECTS

AGENDA:

1. Introductions
2. Workshop#1 Summary
3. Concept Alternatives
4. Park Amenities
5. Lighting/Stormwater Approach
6. Workshop Exercises
7. Next Steps

SETTING THE STAGE

Objectives: The objective for today's public meeting is to present two concept designs for the park space and gather feedback from both the school district and the community on the proposed amenities, design elements, layout, and priorities for the park's development.

Joint Use: Refers to the collaborative sharing and utilization of facilities, resources, or spaces between multiple entities, such as the county's Parks and Recreation Department and the La Mesa Spring Valley School District, to maximize benefits and efficiency for all parties involved. This includes establishing clear agreements on space allocation, maintenance, scheduling, funding, and usage policies to ensure that the needs of both the school and the community are met effectively.

Park Amenities: Are features such as sports field, playgrounds, picnic areas, running track, green spaces, benches, lighting, and fitness equipment.

ENVIRONMENTAL ANALYSIS



- The project will comply with all applicable environmental regulations including, but not limited to:
 - California Environmental Quality Act (CEQA)
 - Multiple Species Conservation Program (MSCP)
 - Federal and State Endangered Species Acts
- DPR will be considerate of the environment and environmental stewardship throughout the course of the project in alignment with the DPR mission.

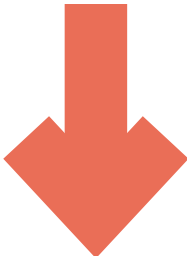
PUBLIC ENGAGEMENT PROCESS

STEP 1

Fall 2024

Community Workshop #1 / Spring Valley Academy & Valle De Oro/ Spring Valley Community Programming Preferences

Community Survey #1

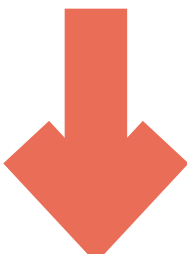


STEP 2

Winter 2025

Community Workshop #2 / Spring Valley Academy & Valle De Oro/ Spring Valley Community 2 Concept Alternatives / Preferred Concept Selection

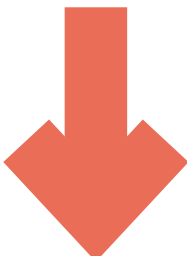
Community Survey #2



STEP 3

Spring 2025

Community Workshop #3 / Spring Valley Academy & Valle De Oro/ Spring Valley Community Preferred Concept Plan



STEP 4

Summer 2025

Final Concept Plan

WORKSHOP #1 SUMMARY

Preferred Park Activity Level



WORKSHOP #1 SUMMARY

Preferred Park Program Priorities

Top Priorities:

- Shaded Promenade
- Flexible Event Lawn
- Running Track
- Sheltered Area
- Walking Trails
- Small Gathering Areas



Recreational Soccer Field



Kickball Field



Outdoor Classroom



Flexible Event Lawn



Running Track



Walking Trails



Fitness Stations



Fitness Area



Shaded Promenade



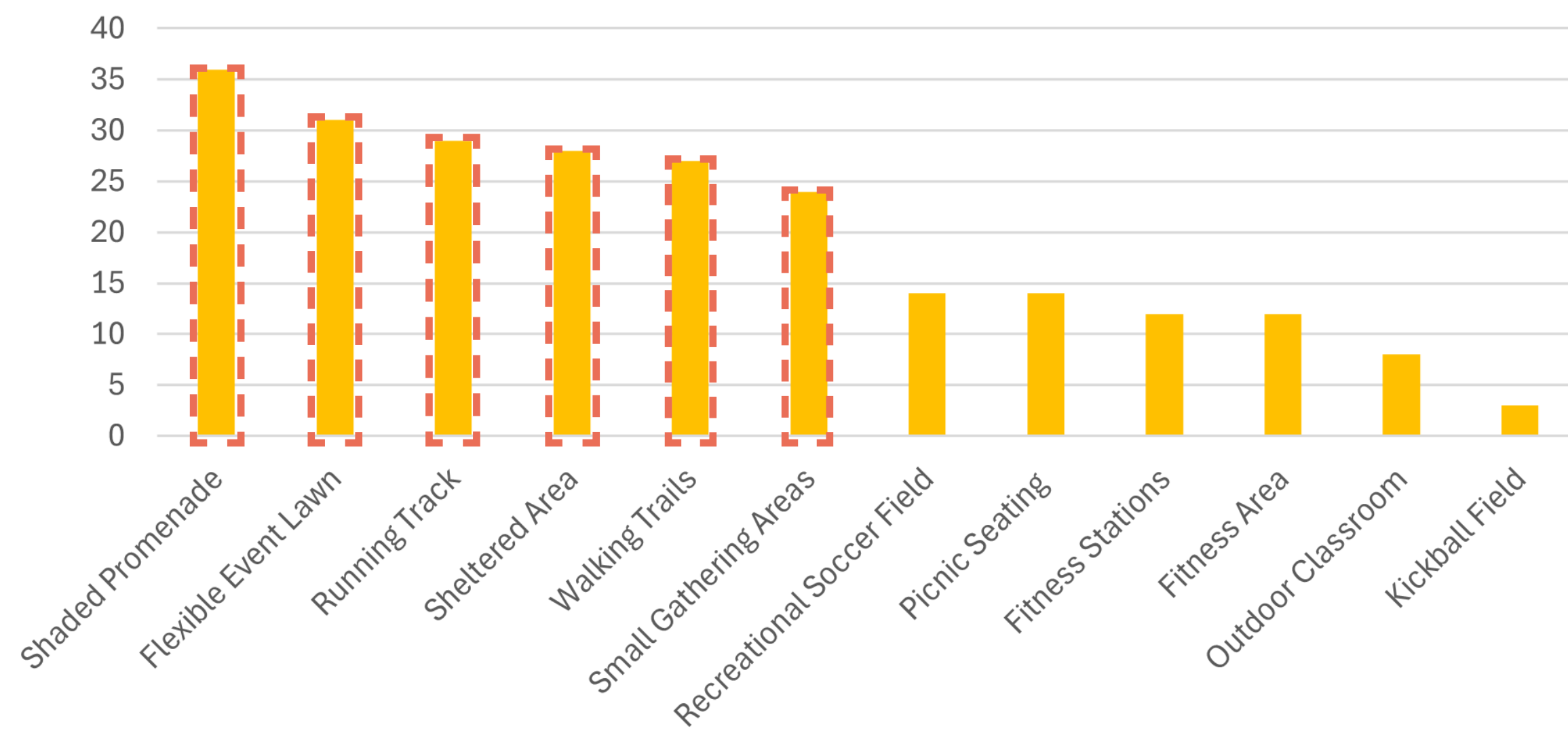
Sheltered Area



Picnic Seating



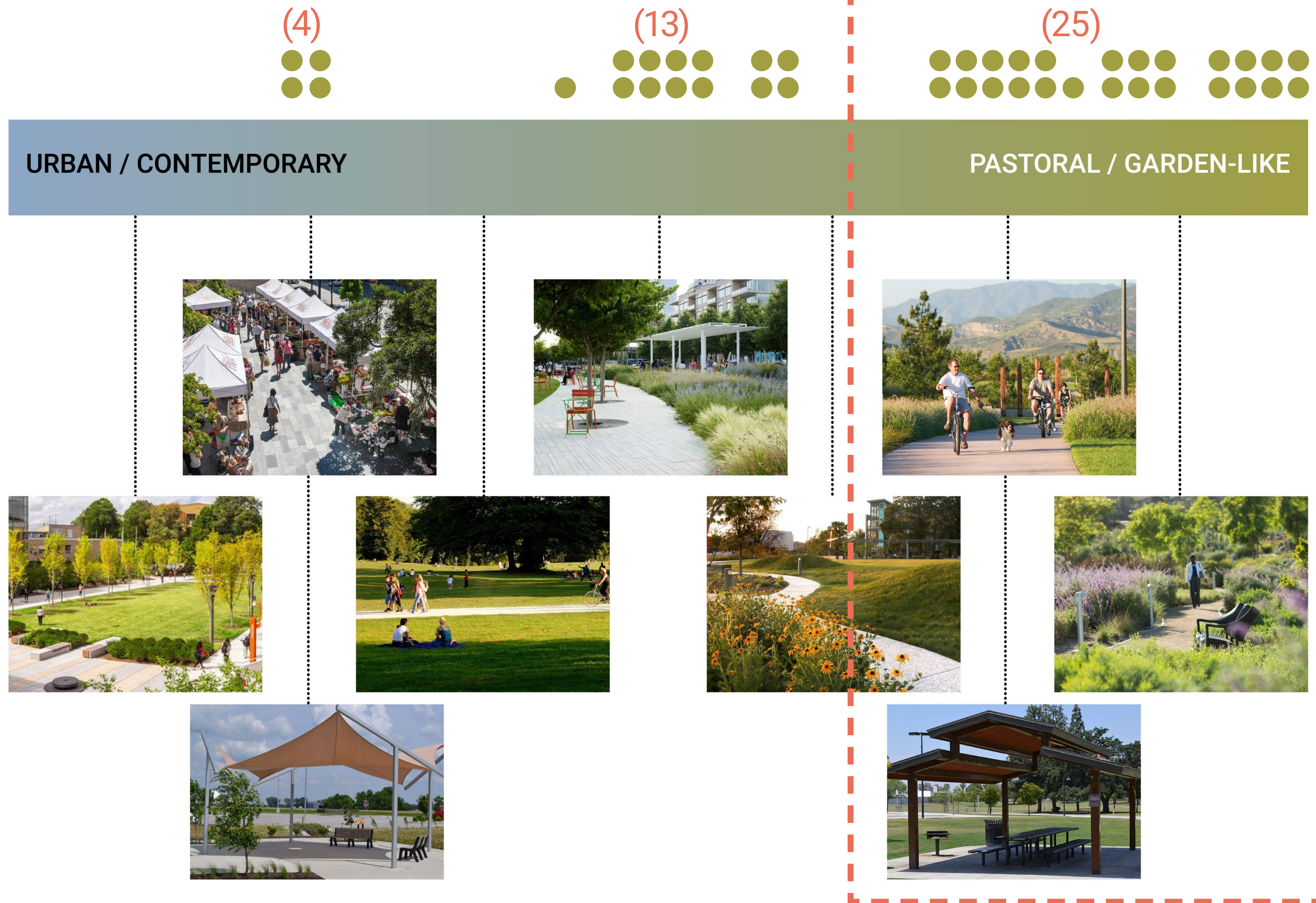
Small Gathering Areas



WORKSHOP #1 SUMMARY

Preferred Park Character

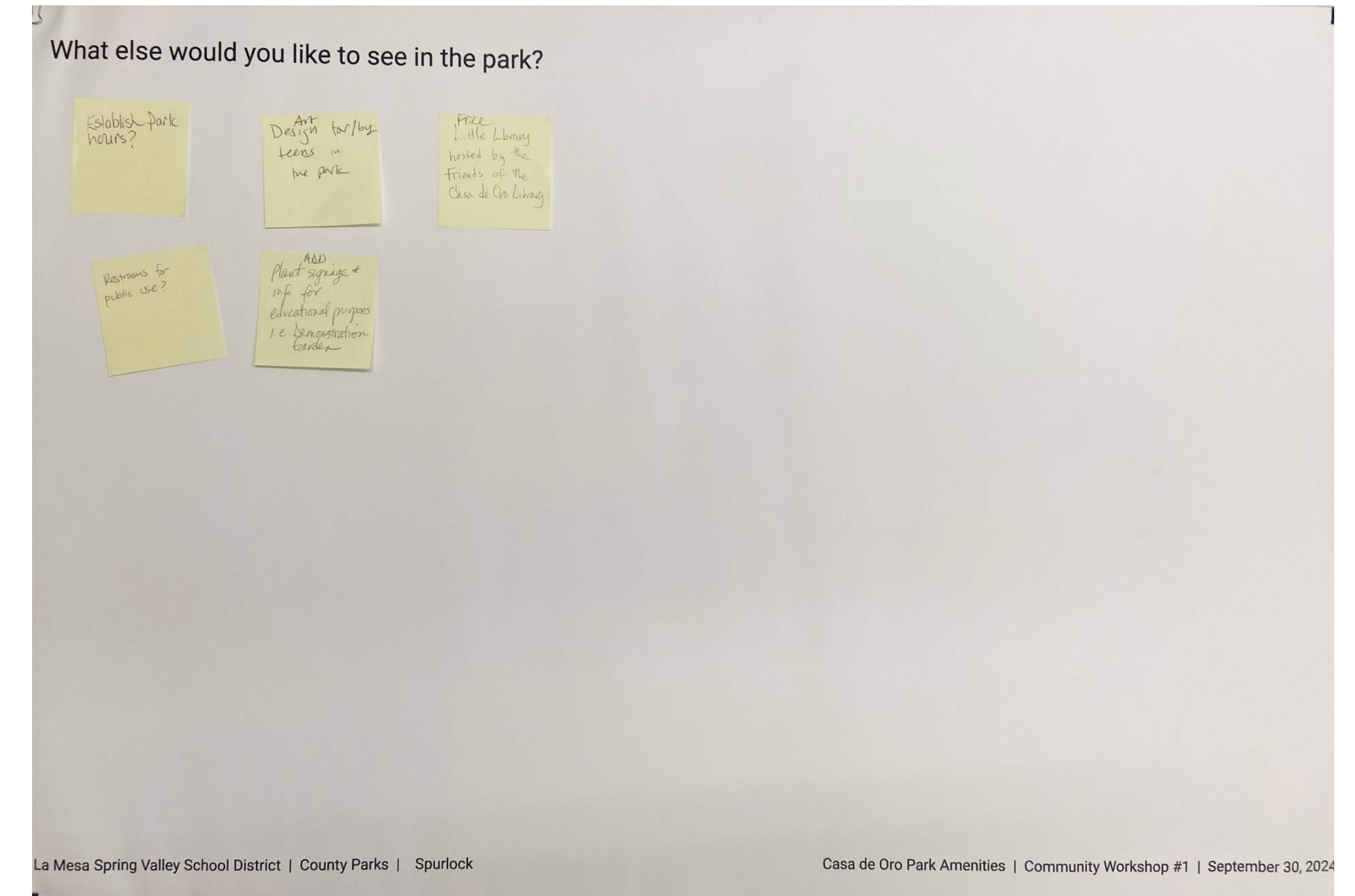
Preferred Park Character: Pastoral/ Garden-Like



WORKSHOP #1 SUMMARY

Additional Comments

- Shade is a priority
- Space for teen activities and community gatherings is desired
- Pedestrian access is challenging
- Sidewalk improvements are needed
- Parking is limited
- Security and lighting are a concern
- Community hosted pop-up events and concerts are desired
- Proper drainage is needed



Casa de Oro Park Amenities Community Workshop #1

Q6 Additional comments:

Answered: 7 Skipped: 17

#	RESPONSES	DATE
1	Proper drainage is a requirement!	10/15/2024 11:14 AM
2	A place where the Community could gather for small concerts, talks, and gatherings is sorely needed.	10/14/2024 8:58 AM
3	It's very costly and difficult to maintain natural turf over time. Even though real grass is cooler, the artificial turf allows for better handling of water, far more all-day use without falling apart, and more long-term value for all park patrons. Waterwise landscaping can be used elsewhere, but unless there is long-term budget to maintain it well, it will not last long.	10/11/2024 3:57 PM
4	I love the parks in Santee and chula Vista..so inviting and calming.	10/5/2024 10:35 AM
5	Please let there be a big grassy area for dogs and kids to run.	10/3/2024 5:51 PM
6	I just worry it will become an area for the homeless. How would that be mitigated? Is it a closed park at certain hours to prevent this from happening?	9/30/2024 11:44 PM
7	Limited athletic space allows for more space for scholarship, contemplation, and collaboration. The plants should provide opportunities for learning about horticulture. The park space needs to complement and leverage any gathering space planned for the library building to be accessible after library hours. Lights for landscaping and pathways should be included to promote safety and evening use.	9/30/2024 6:36 PM

WORKSHOP #1 SUMMARY

Amenity Specific Comments

- Include nature education / recognition and demonstration garden
- Make it dog friendly
- Provide public restrooms
- Provide pickleball courts
- Integrate artwork
- Include teen-friendly skate / parkour elements



Casa de Oro Park Amenities Community Workshop #1

Q4 What other amenities would you like to see in your park?

Answered: 12 Skipped: 12

#	RESPONSES	DATE
1	Proper landscaping, grading, and drainage!	10/15/2024 11:14 AM
2	Slides and swings	10/15/2024 10:34 AM
3	Pickleball courts.	10/15/2024 9:18 AM
4	Artwork	10/15/2024 6:15 AM
5	Would like a small kids area with a playground. It doesn't need to be the focal point of the park, but should be included. Those of us with kids need those areas close. It would be great to be able to go outside the new library and stay a while in the park.	10/15/2024 5:19 AM
6	It's an abnormally hot microclimate in Casa De Oro from May through September. Shade features will be very important to ensuring people want to use the area year-round!	10/11/2024 3:57 PM
7	Art work along pathways; Water features; sufficient parking	10/5/2024 10:35 AM
8	I'd really love it if it were dog friendly! We really need more dog areas in Casa de Oro!	10/3/2024 5:51 PM
9	Garbage receptacles,	10/1/2024 1:01 PM
10	Dog friendly, signs to clean up after dog	9/30/2024 11:44 PM
11	Ability for the space to be an educational, nurturing, reflective, gathering space for students and the larger community.	9/30/2024 6:36 PM

WORKSHOP #1 TAKE-AWAYS - PARK PROGRAM PRIORITIES

- The Promenade



- The Field



- The Green



- The Garden



- Walking Trails



- Track



- Shade



- Fitness



CONCEPT ALTERNATIVES OVERVIEW

CONCEPT 1 - SPORTS HUB



Program Summary



CONCEPT 2 - LAYERED ACTIVITY



Program Summary



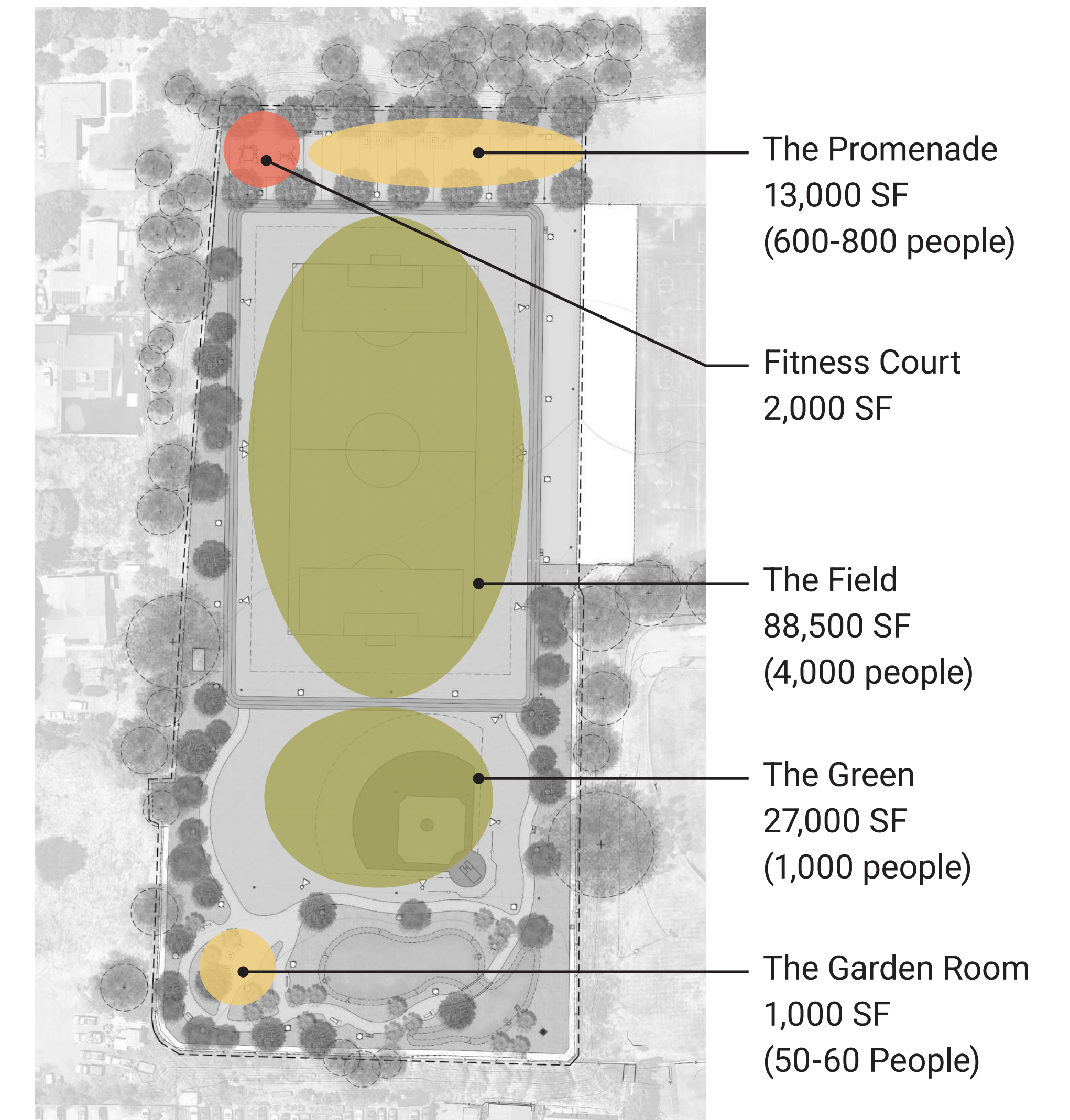
PRELIMINARY CONCEPT 1 - SPORTS HUB



KEY FEATURES

- Concentrated amenities at north end of park
- Views to Mt. Helix and Mt. San Miguel preserved
- Tree lined promenade and shade structures at north end of park
- Large multi-purpose lawn with 1/4 mile track
- Fitness court
- Garden walking trails, benches and picnic tables
- Storm water capture treatment basin overlook with interpretive signage

Program Summary



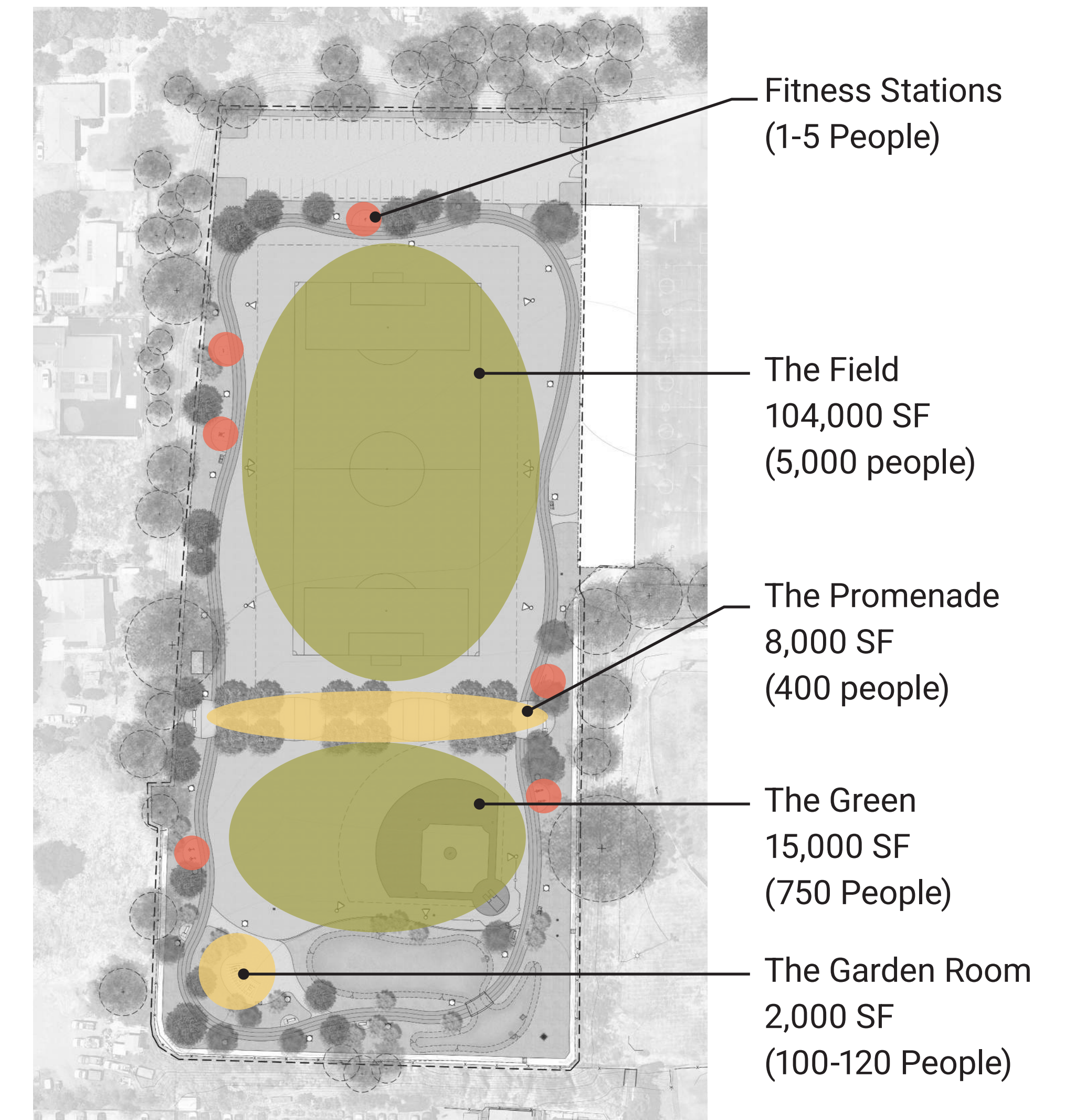
PRELIMINARY CONCEPT 2 - LAYERED ACTIVITY



KEY FEATURES

- Amenities dispersed throughout the park
- Views to Mt. Helix and Mt. San Miguel preserved
- Tree lined promenade separating multi-purpose field and kick-ball field
- Track with Fitness Stations
- Garden walking trails, benches and shade structure gathering area
- Expanding parking lot (~40 stalls)

Program Summary



CONCEPT ALTERNATIVES - SUMMARY

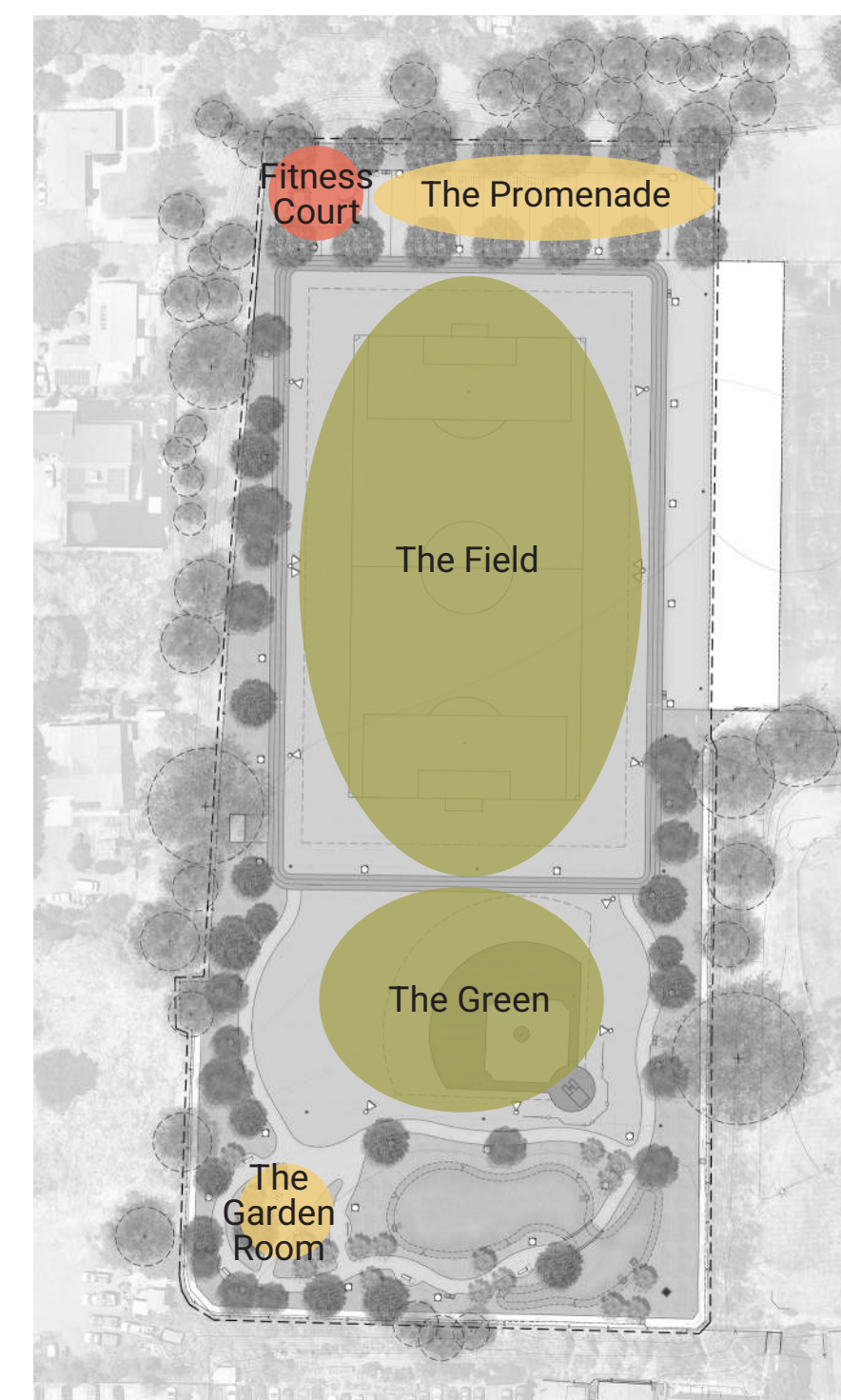
CONCEPT 1 - SPORTS HUB



KEY FEATURES

- Concentrated amenities at north end of park
- Tree lined promenade and shade structures at north end of park
- Large multi-purpose lawn with 1/4 mile track
- Fitness Court

Program Summary



CONCEPT 2 - LAYERED ACTIVITY



KEY FEATURES

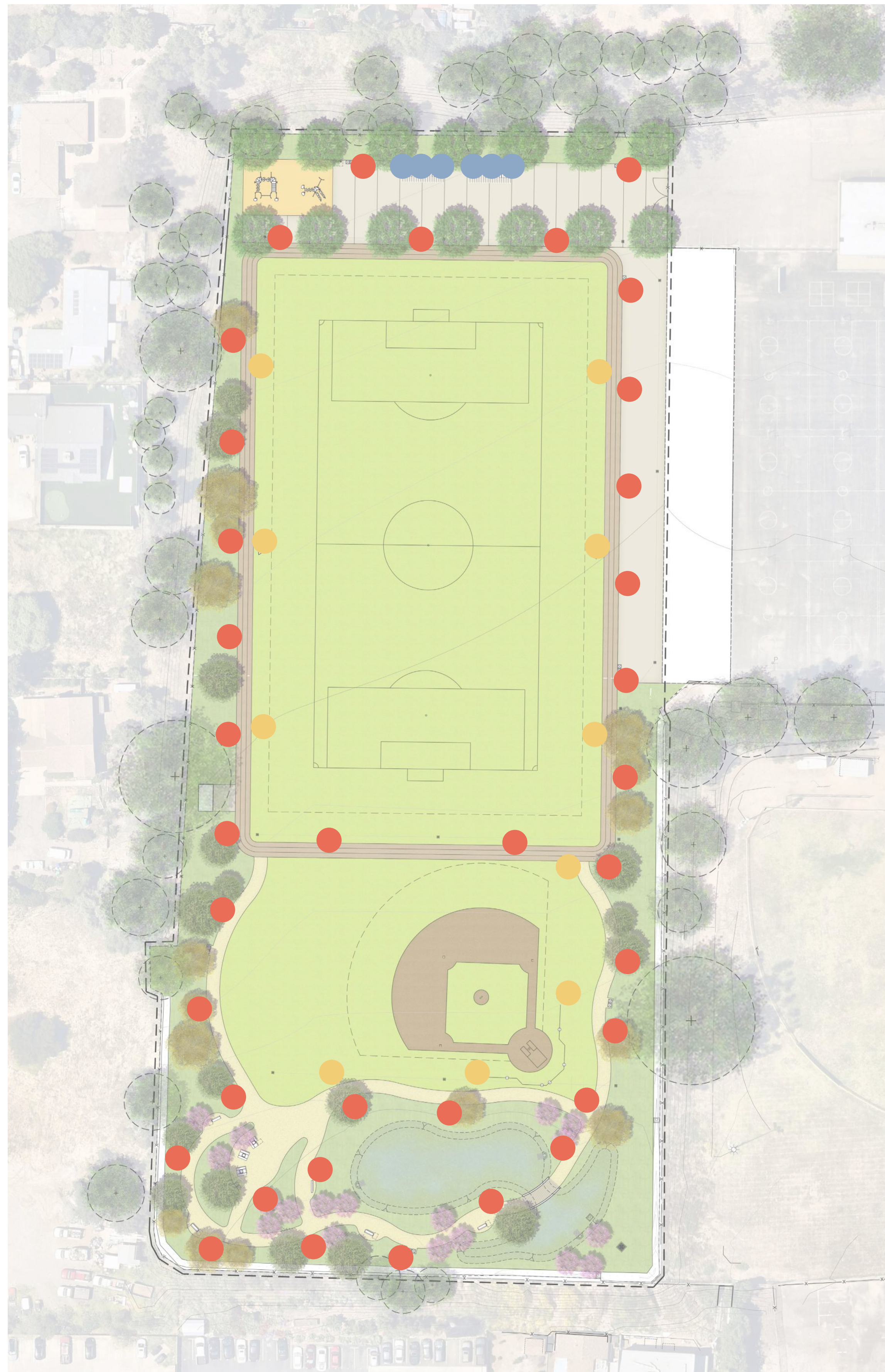
- Amenities dispersed throughout the park
- Tree lined promenade separating multi-purpose field and kick-ball field
- Track with Fitness Stations
- Expanding parking lot (~40 stalls)

Program Summary



LIGHTING APPROACH

CONCEPT 1 - SPORTS HUB



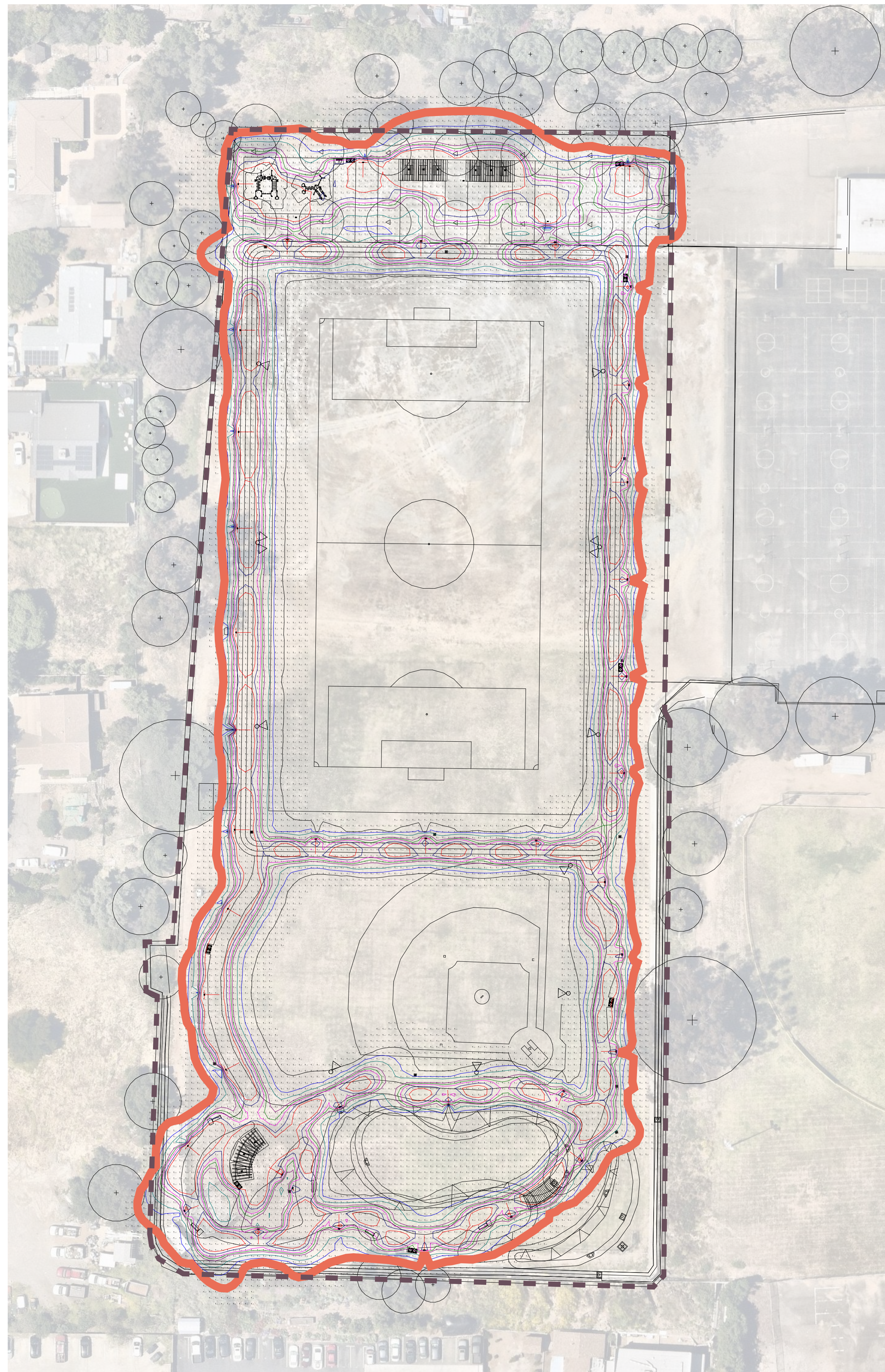
CONCEPT 2 - LAYERED ACTIVITY



- PEDESTRIAN POLE LIGHT
Option - 1 Option - 2
 - SPORTS FIELD FLOOD LIGHT
 - SHADE STRUCTURE SURFACE DOWN LIGHT
- POLE LIGHT HOUSE SIDE SHIELD
- 
- 
- 

LIGHT LEVEL EXHIBIT

CONCEPT 1 - SPORTS HUB



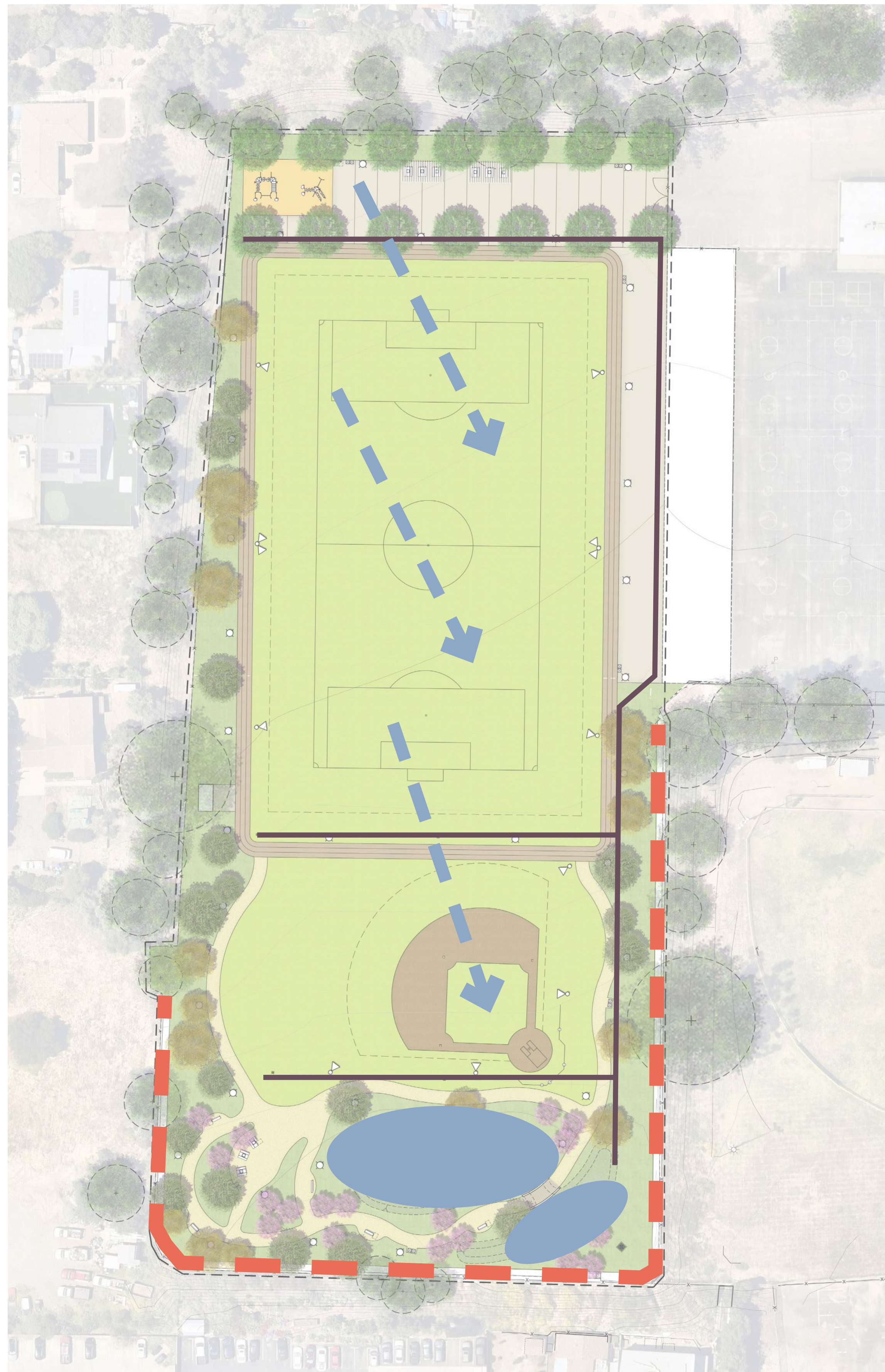
CONCEPT 2 - LAYERED ACTIVITY



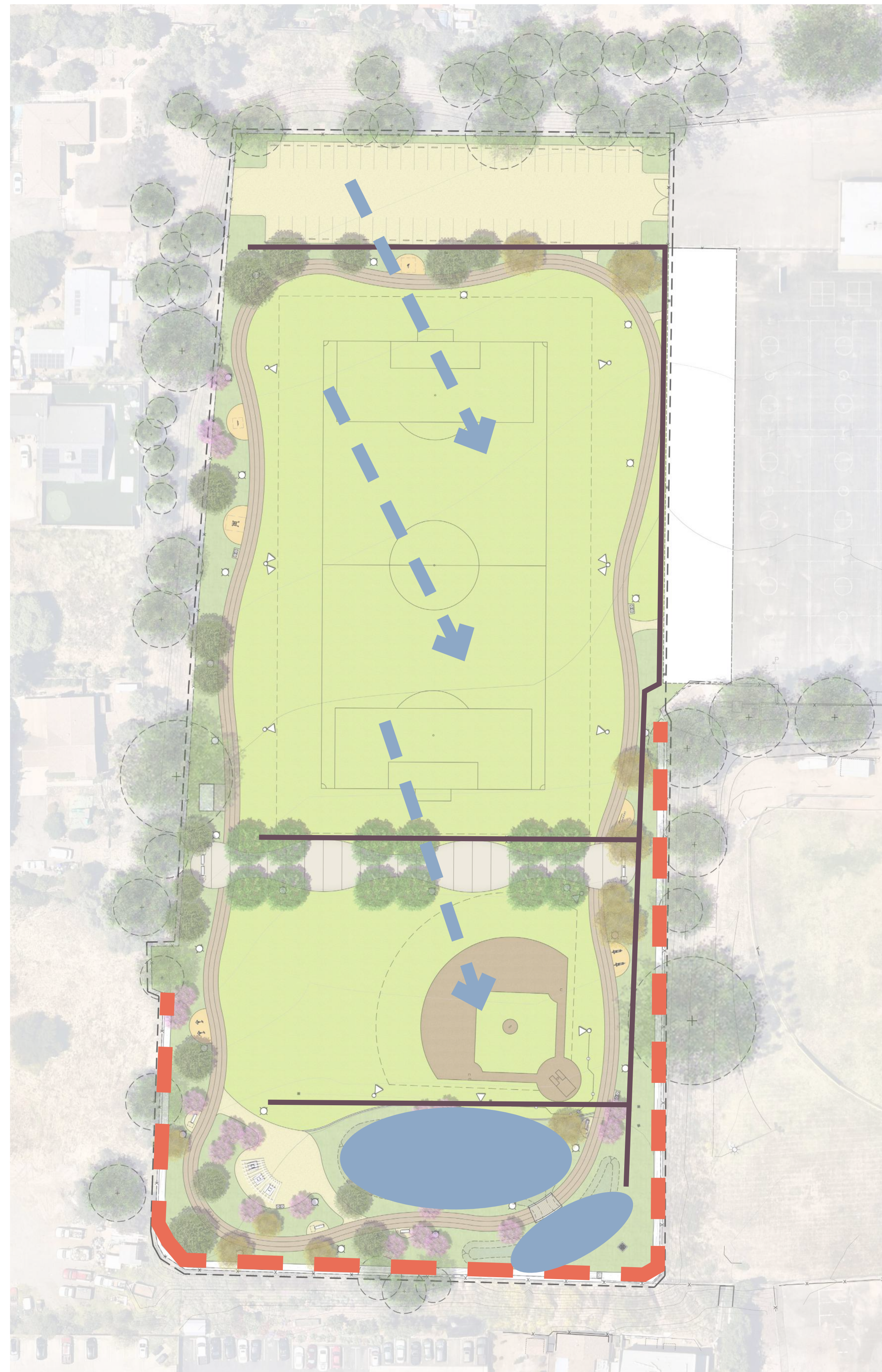
- EXTENT OF LIGHTING
- - - LIMIT OF WORK


STORMWATER APPROACH

CONCEPT 1 - SPORTS HUB



CONCEPT 2 - LAYERED ACTIVITY



-  SURFACE WATER FLOW
-  Site grading for direction of surface water
-  SURFACE DRAIN INLETS
-  A series of surface drain inlets to capture surface stormwater and direct it to the infiltration basin
-  DRAINAGE DITCH
-  New brow ditch at project perimeter to help pick up and direct water to inlets
-  BIO-FILTRATION BASIN
-  Depressed stormwater capture and infiltration area with planting

PARK AMENITY PREFERENCES - FITNESS AREA TYPE

Fitness Court



Fitness Stations



PARK AMENITY PREFERENCES - SPECIAL SEATING TYPES



Lounge Seating



Small Gathering Bench Seating



Informal Seating



Picnic Table Seating

Are we missing anything?

WORKSHOP EXERCISES

Exercise 1: Park Design Alternatives

Place (1) dot on the preferred park design concept

Exercise 2: Fitness Area Type

Place (1) dots on the preferred fitness equipment configuration

Exercise 3: Special Seating Types

Place (2) dots on preferred special gathering space

Virtual Participant's Link:

<https://www.surveymonkey.com/r/CasaDeOroParkWS2>



QUESTIONS



**Please raise your hand or
type your questions and comments in the Q&A pane
and we will answer your questions**

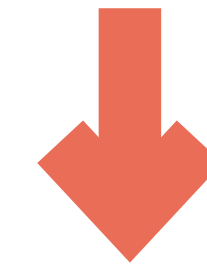
NEXT STEPS

STEP 1

Fall 2024

Community Workshop #1 / Spring Valley Academy & Valle De Oro/ Spring Valley Community Programming Preferences

Community Survey #1

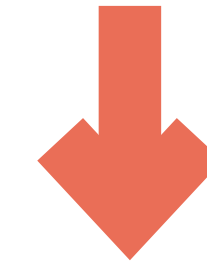


STEP 2

Winter 2025

Community Workshop #2 / Spring Valley Academy & Valle De Oro/ Spring Valley Community 2 Concept Alternatives / Preferred Concept Selection

Community Survey #2



STEP 3

Spring 2025

Community Workshop #3 / Spring Valley Academy & Valle De Oro/ Spring Valley Community Preferred Concept Plan



STEP 4

Summer 2025

Final Concept Plan

Thank you!

CASA DE ORO PARK AMENITIES

Follow this project at
<https://www.sdparks.org/content/sdparks/en/AboutUs/Plans/ParksImprovementPlan.html#cdo> and answer the online survey:



Email questions or send feedback to:

Camille Wildburger
Park Project Manager
County of San Diego Department of Parks
and Recreation
CamilleL.Wildburger@sdcounty.ca.gov



SPURLOCK
LANDSCAPE ARCHITECTS