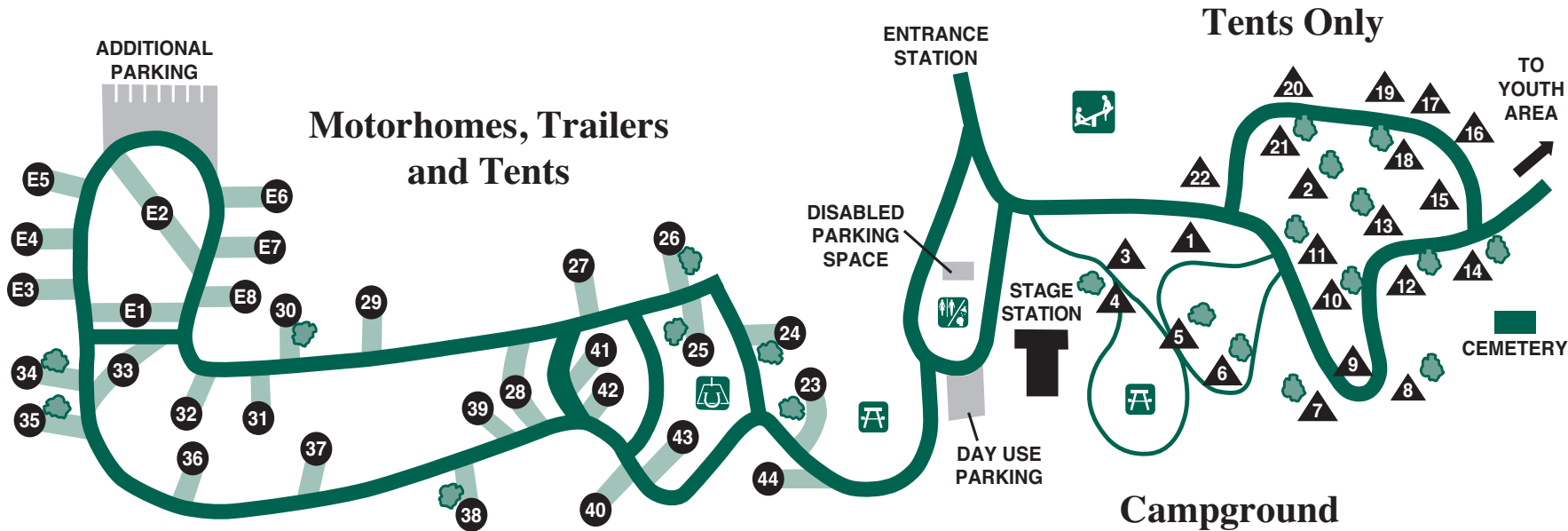


Vallecito County Park

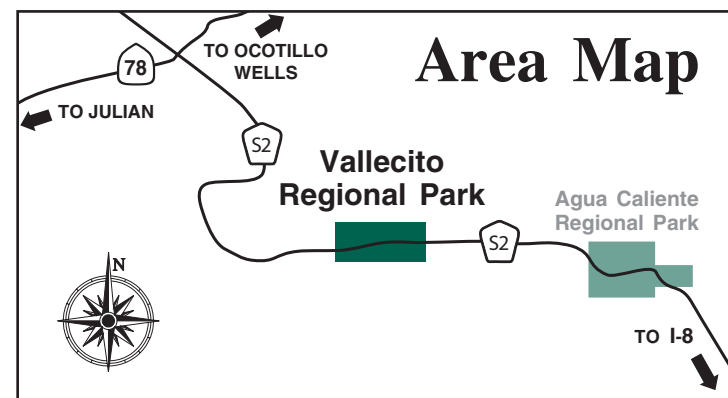
37349 Great Southern Overland Stage Route of 1849, Julian, CA 92036 • 760-765-1188

Open Labor Day weekend to Memorial Day weekend



Legend

- E# Equestrian Site
- Non-hookup Sites
- Tent Site Only
- Restroom with Showers
- Picnic Area
- Playground
- Horseshoes
- Partial Shade



NOTE: Camping in the park is contingent upon guests maintaining their immediate camping area in a safe and clean condition and complying with all park rules. Failure to comply will result in a suspension of camping privileges and loss of prepaid fees.

RULES AND REGULATIONS

- ALCOHOLIC BEVERAGES:** Alcoholic beverages are permitted providing the alcohol content does not exceed 20%.
- CAMPFIRES:** Must be confined to existing stoves or fire rings. See ranger for current campfire rules. Please check with park ranger for firewood. Please do not gather wood from within the park. No fires after 11 p.m.
- DRONES:** Remotely piloted aircraft and drones are prohibited.
- FIREARMS & WEAPONS:** Firearms, fireworks, and weapons are not permitted in County Parks.
- GENERATORS:** Generators are allowed between the hours of 8 a.m. and 10 p.m., so long as the noise does not disturb the peace and quiet of the campground or neighboring sites.
- NOISE:** To ensure each park guest's pleasure and peace, quiet hours are from 10 p.m. to 8 a.m. Excessive noise and loud music is discouraged at all times.
- PETS:** Pets are permitted if they are properly restrained and under the control of the owner. Dogs must be licensed, restrained on a leash not longer than 6 feet, and attended at all times.
- TREES:** Do not tie or hang ropes, wire, or tents to trees. Do not drive nails, screws, or staples into trees.
- VEGETATION & NATURAL FEATURES:** All plants, animals, natural features, and archaeological resources are fully protected and may not be damaged, injured, or removed.
- WASTE WATER:** Please dispose of all waste water in an approved dump station, never on the ground.
- YOUTH:** All persons under 18 years of age must be accompanied by a legally responsible adult with medical authorization for each child while camping in the park.

INFORMATION



COUNTY OF SAN DIEGO
Department of Parks and Recreation
 5500 Overland Ave., Suite 410
 San Diego, CA 92123

Reservations & Information
 (877) 565-3600 • (858) 565-3600

Visit us at sdparks.org

VALLECITO COUNTY PARK

A San Diego County Camping Park



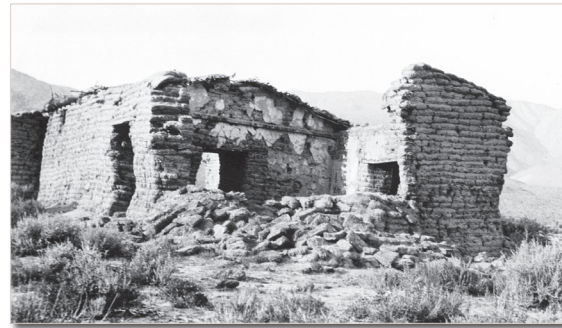
Welcome to Vallecito County Park

When an East Coast traveler saw Vallecito for the first time in 1859, he described it as a “beautiful green spot - a perfect oasis in the desert.” A portion of that “little valley,” as its Spanish name is translated, has been preserved as a County park built around a reconstruction of the Historic Vallecito Stage Station. The park offers the modern-day camper a quiet place in which desert secrets reveal themselves to those who take the time to watch and listen.



Vallecito Stage Station, 1902. Photo by Ed Davis

That 19th Century traveler was just one in a long line of appreciative visitors. From the Native Americans who lived here for thousands of years, to the Spanish conquistadors, and explorers and soldiers such as Kit Carson and General Stephen Kearny, as well as emigrants in the early part of this century who still traveled by wagon, Vallecito has always been a green refuge in an often harsh land. Countless generations of Native Americans camped here before the arrival of the new Americans in the 19th Century, and these Newcomers left an indelible impression.

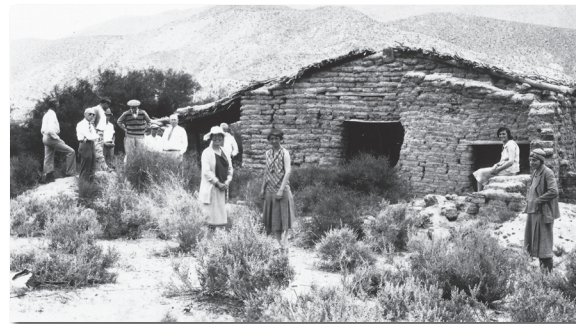


Vallecito Stage Station, 1923. Photo by Louis Strahlmann

The Vallecito Stage Station is a testament to one of the most dynamic decades of this area's history. First used as an army supply depot, then as a rest stop on the “Jackass Mail” route between San Antonio and San Diego, the building was busiest during the lifetime of the Butterfield Overland Stage (1858-1861). The stage line carried mail and passengers over 2,800 miles separating Tipton, Missouri and San Francisco in 25 days. It was said to be the longest stage ride in the world.

Stage stations scattered along the route offered the weary passengers a brief meal and rest as the horses were changed. Then it was on to the next stop on the 24-hour-a-day journey. Vallecito was a favorite station since it was the first place with greenery that travelers saw after crossing the hostile mail route in the southern desert.

In 1934 the County purchased the building, which had been rebuilt using original materials. But it's not only human history that is preserved here.



Vallecito Stage Station restoration committee, 1934



The extensive vegetation in the small valley supports abundant wildlife including foxes, coyotes, and many reptiles. Birds are especially attracted to the mesquite and acacia thickets; among the avian residents are desert specialties such as cactus wrens and black throated sparrows.



Facilities

Vallecito is a quiet alternative to some of the busier desert campgrounds around the area. One attraction is the weather, which averages about 10 degrees cooler than nearby Agua Caliente. The 44 primitive campsites at Vallecito have tables, fire rings, and barbecue stoves, and water is available at scattered locations throughout the campground.

An equestrian area and one youth area offers additional camping possibilities at the 71-acre park. Children will enjoy the tot lot, and picnickers will want to make use of a large covered picnic area. Vallecito also welcomes pets on a leash.

The vast regional park is a convenient hub to enjoy other desert activities such as miles of hiking as in the neighboring Anza-Borrego Desert State Park.

